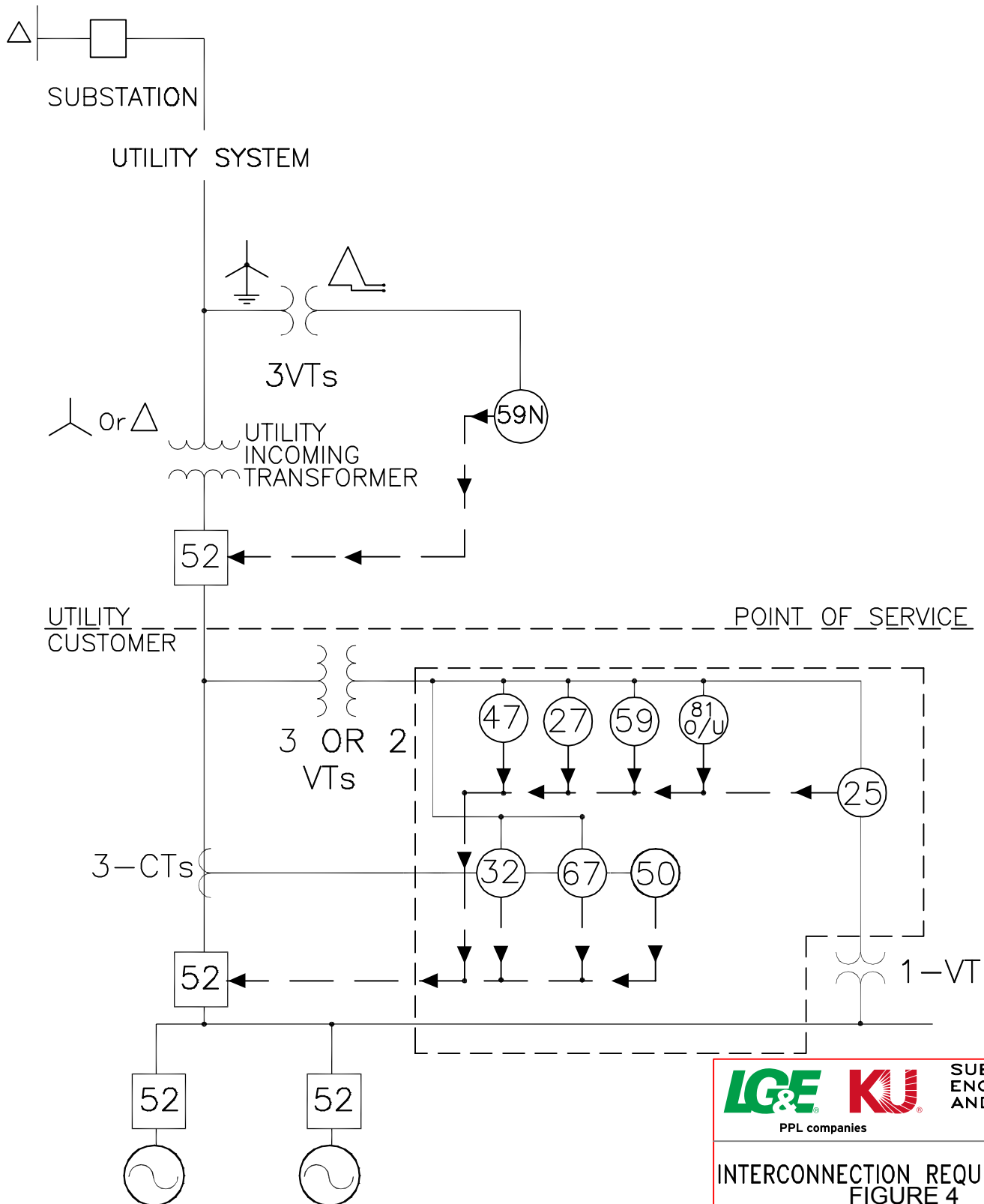


**LG&E/KU INTERCONNECTION REQUIREMENTS FOR
PARALLEL STANDBY GENERATION SCHEMES**

**TYPE 4 - SECONDARY INTERCONNECTION TO
13.8 KV SYSTEM**



LG&E KU SUBSTATION
ENGINEERING
AND DESIGN
PPL companies

INTERCONNECTION REQUIREMENTS
FIGURE 4

DRAWN: 10/6/04 Rocky Flood
REVISED: 5/11/12 Gary Hethcox

SPEC-252 D