



Atlanta  
Beltline

WELCOME > WESTSIDE TRAIL – SEGMENT 6 > OAKLAND CITY & MURPHY CONNECTOR > Q&A > WRAP UP

# ABI Data Collection

In order to meet our promise of a Beltline for all, we are working to collect demographic and geographic information from our participants. This information is strictly for internal reference and research purposes only to guide us in outreach and public engagement efforts and will not be distributed to other organizations.



Atlanta  
Beltline

# Southwest Study Group: Westside Trail - Segment 6 and Oakland City & Murphy Connector Trail Design Updates

July 14, 2025

6:30-8pm





Atlanta  
Beltline

# Virtual Meeting Format

- Your line is muted, and you won't be able to share your video on screen during the meeting.
- A recording of this meeting, the presentation, a copy of tonight's Q&A and all other supporting materials will be made available at [beltline.org](https://beltline.org).
- If you are having technical difficulties during the meeting, please email [engage@atlbeltline.org](mailto:engage@atlbeltline.org).



Atlanta  
Beltline

# Poll Question #1:

**What neighborhood do you live in?**

- West End
- Westview
- Oakland City
- Bush Mountain
- Adair Park
- Capitol View
- A Beltline Neighborhood in the City of Atlanta not on this list
- A Neighborhood in the City of Atlanta not on this list
- A Neighborhood not in the City of Atlanta





Atlanta  
Beltline

# Poll Question #2:

**How long have you lived in your neighborhood?**

- 1-5 years
- 6-10 years
- 11 or more years



Atlanta  
Beltline

# Poll Question #3:

**What is your relationship to the Atlanta Beltline?**

- I use the trail
- I am a homeowner in a Beltline neighborhood
- I rent a home in a Beltline neighborhood
- I am a residential landlord
- I am a business owner in a Beltline neighborhood
- I am a commercial landlord
- I am a developer
- I am a real estate broker
- I am a community activist/advocate
- I am generally interested in the Beltline project



Atlanta  
Beltline

# Poll Question #4:

**What are you most likely to be doing on the trail?**

- Exercising or other recreation
- Running errands
- Getting to work or school
- Engaging in leisure activities
- I don't use the trail



Atlanta  
Beltline

# Poll Question #5:

**Is tonight your first Beltline meeting?**

- Yes
- No





# Our Vision

To be the catalyst for making Atlanta a global beacon for equitable, inclusive, and sustainable life.

22

MILES

of pedestrian-friendly rail transit

1,100

ACRES

of environmental cleanup

33

MILES

of multi-use urban trails

1,300

ACRES

of new greenspace

\$10B

in economic development

50K

PERMANENT JOBS

5,600

UNITS

of affordable workforce housing

48K

CONSTRUCTION JOBS



Atlanta  
Beltline

[WELCOME](#) > [WESTSIDE TRAIL – SEGMENT 6](#) > [OAKLAND CITY/ MURPHY CONNECTOR](#) > [Q&A](#) > [WRAP UP](#)

# Westside Trail – Segment 6

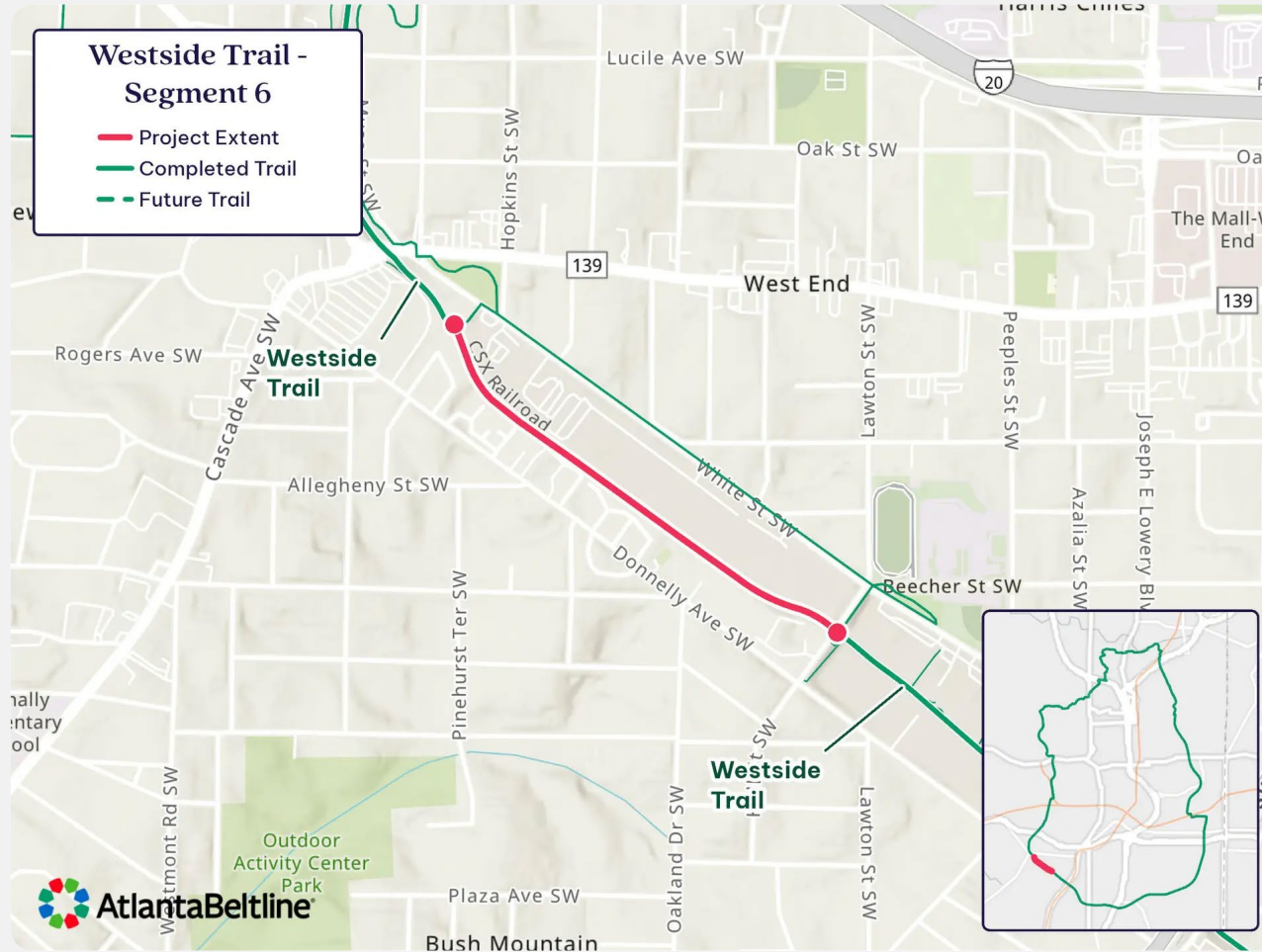






Atlanta  
Beltline

# Westside Trail - Segment 6



- Length: 0.6 Mile
- Former rail corridor
- Located in West End neighborhood, near Westview
- Lee + White Complex and Westside Trail adjacent to southern end
- Gordon White Park And Westside Trail adjacent to northern end



Atlanta  
Beltline

# Design Team



**Design Lead**  
**Landscape Architecture**  
**Project Management**



Barrett  
Woodyard &  
Associates

**Electrical Engineering**  
**Lighting**

**Project Manager**  
Jason Clark, P.E.



**CCTV**

**Project Manager**  
Jorge Gomez, PE, RCDD



**Architectural**  
**Renderings**

**Project Manager**  
Sarah Chawang



**ATWELL**

**Civil Engineering**  
**Fiber Duct Banking**

**Project Managers**  
Wayne Matthews, P.E.  
Wayne Powers, RLS



**Geotechnical**  
**Brownfield Program**

**Project Managers**  
Ali Razavi, P.E.  
Leona Wolthoff, P.E.



**Structural**  
**Engineering**

**Project Manager**  
Holly Jefferies, P.E.





Atlanta  
Beltline

# Existing Conditions







Atlanta  
Beltline

# Existing Conditions







Atlanta  
Beltline

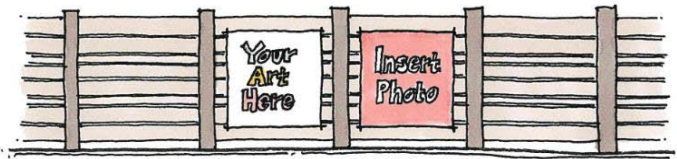
# Existing Conditions



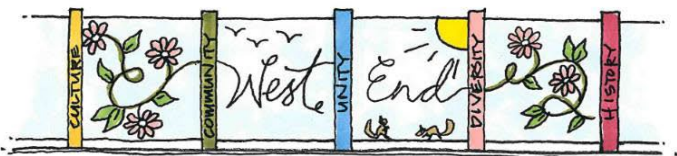




Atlanta  
Beltline



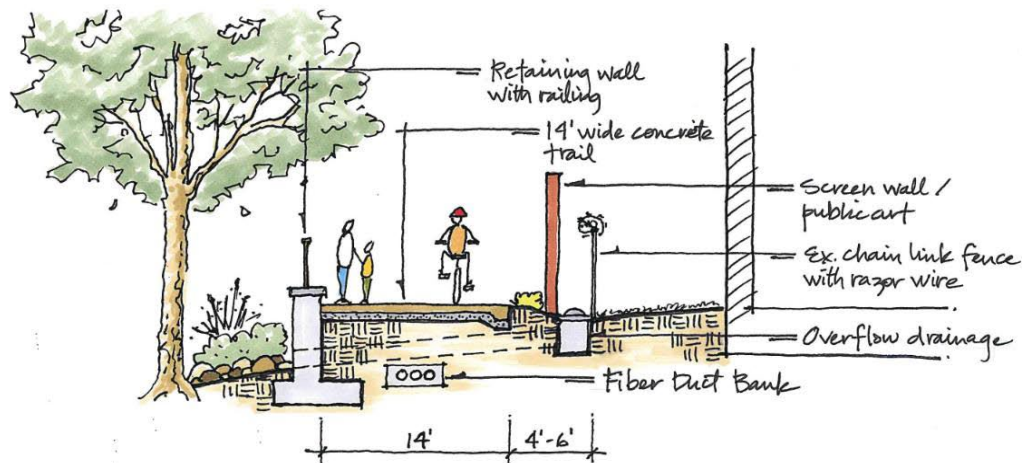
\* Construct a simple, clean screen wall that can serve as a backdrop for rotating art exhibits.



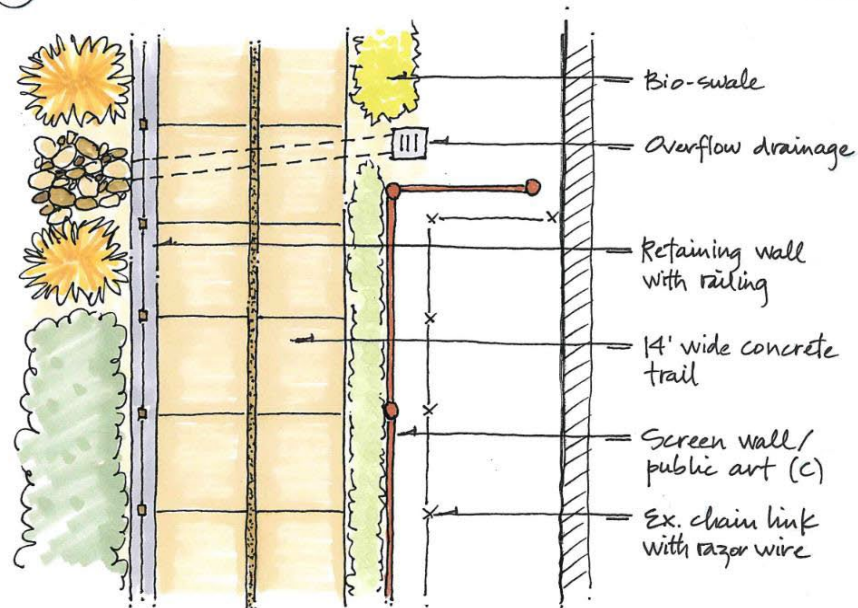
\* Commission a local artist to construct a custom screen wall that is also public art.

### (C) Screen Wall Concepts

WESTSIDE BELTLINE SEGMENT 6



### (B) Conceptual Section (not to scale)



### (A) Conceptual Plan (not to scale)





Atlanta  
Beltline



# Timeframe

- |              |                     |
|--------------|---------------------|
| • 30% Plans  | Late September 2025 |
| • 60% Plans  | Early December 2025 |
| • 90% Plans  | Early February 2025 |
| • Permitting | Spring 2026         |
| • Bidding    | Summer 2026         |

*\*Interim trail open during FIFA World Cup 2026™*

- |                |                     |
|----------------|---------------------|
| • Construction | Fall 2026–Fall 2027 |
|----------------|---------------------|



Atlanta  
Beltline

WELCOME > WESTSIDE TRAIL – SEGMENT 6 > OAKLAND CITY & MURPHY CONNECTOR > Q&A > WRAP UP

# Oakland City & Murphy Connector Trail

1.31-mile section of trail connecting Murphy Avenue & Oakland City MARTA station to the existing Southside Trail







Atlanta  
Beltline

# Project Introduction



- This project includes the design of a 1.31-mile concrete multi-use path beginning at the Southside Trail - Segment 1 access point at Allene Avenue SW and split into two segments.
- Segment 1: 0.45-mile segment will cross over Sylvan Road SW and end at Murphy Avenue.
- Segment 2: 0.86-mile segment will run adjacent to Avon Ave, crossing over Sylvan Road and Dill Ave before ending at the Murphy Oakland City MARTA station.



Atlanta  
Beltline

# Project Team



## MARTIN RICKLES STUDIO



Arborist



Cost Estimator



Genesis Engineering  
Collaborative

Civil Engineer



R. POWELL & ASSOCIATES, INC

Electrical Engineer



Environmental Engineer



Structural Engineer



Traffic Surveyor



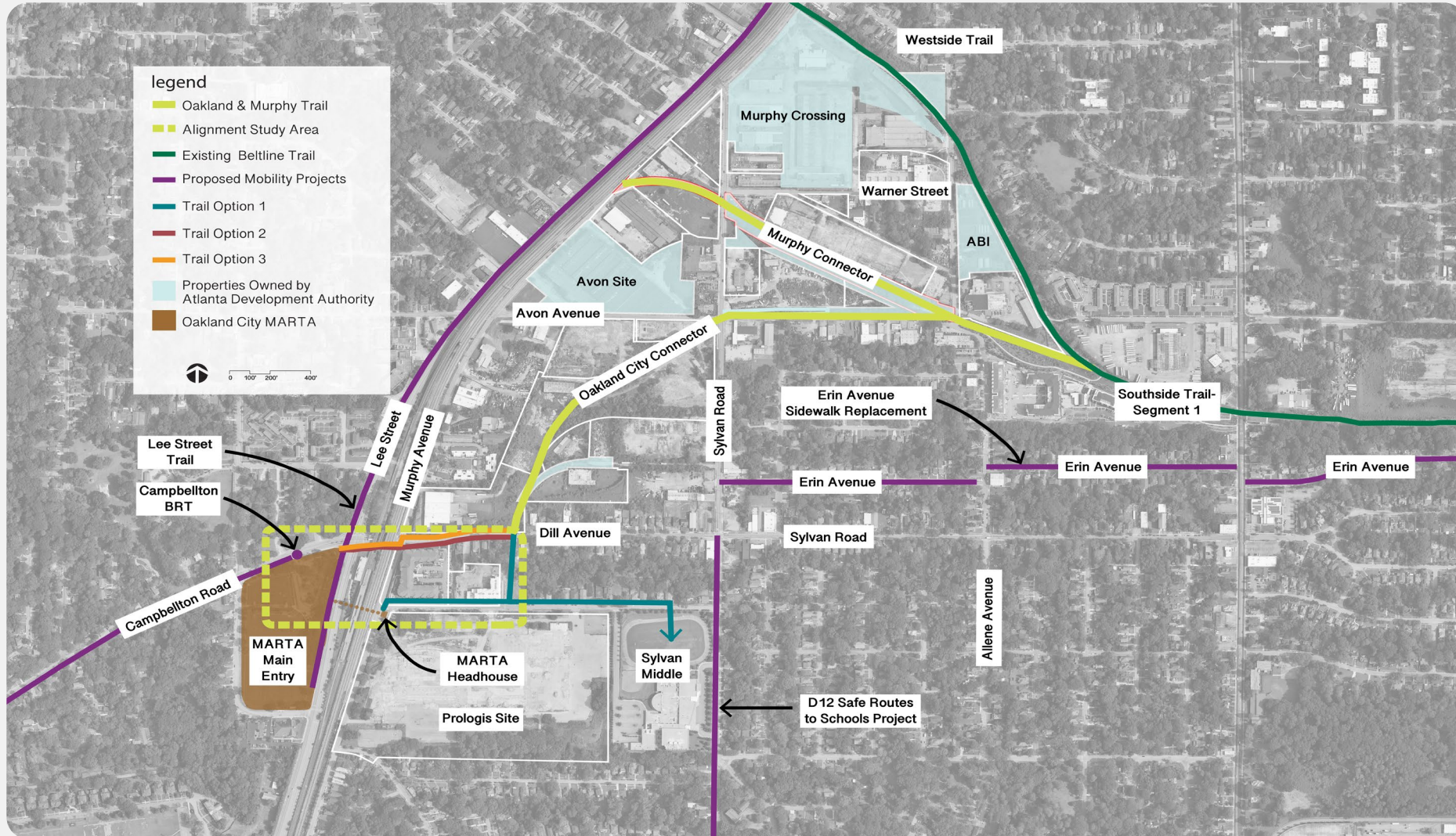
Land Surveyor





Atlanta  
Beltline

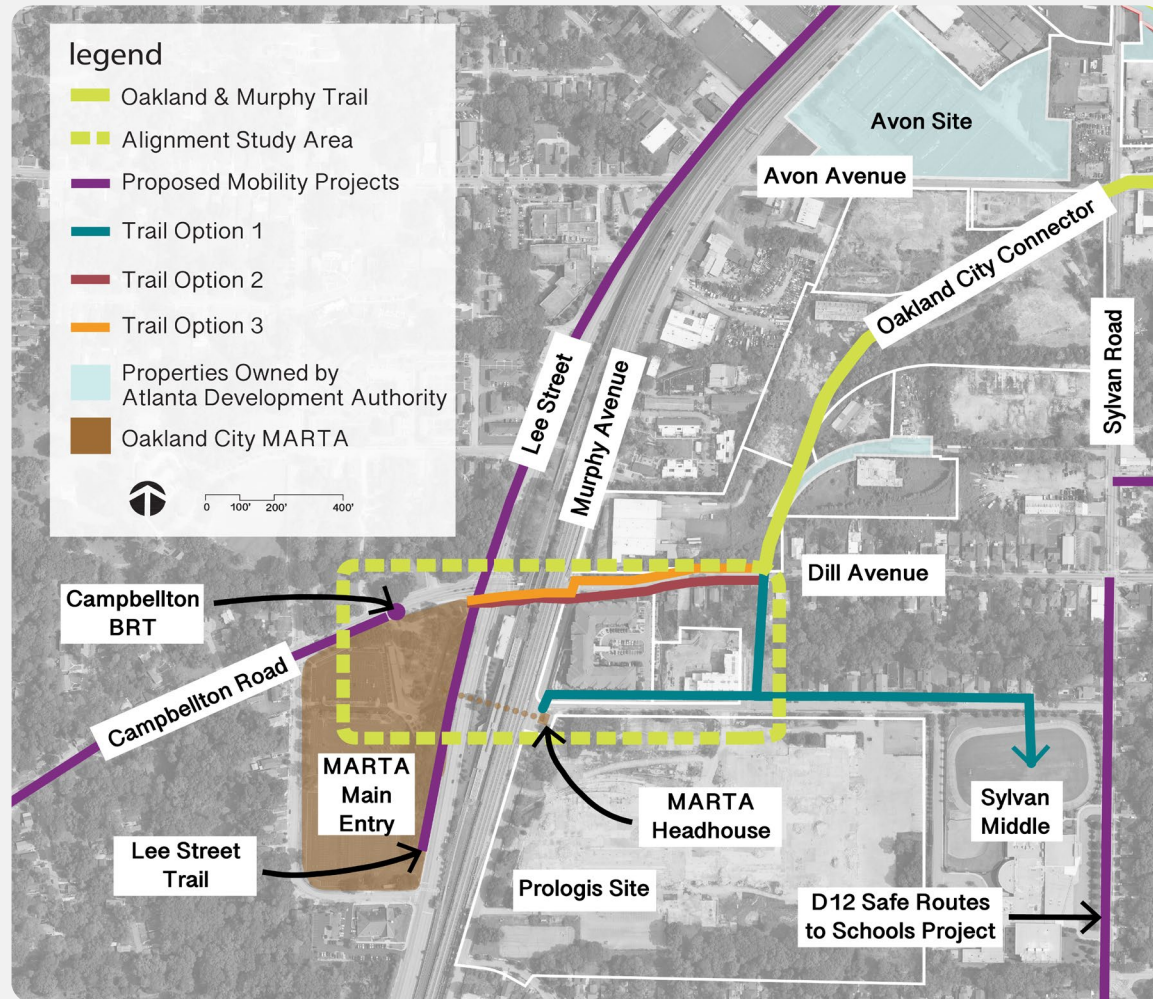
# Existing Conditions





Atlanta  
Beltline

# Alignment Study Area







Atlanta  
Beltline

# Virtual Meeting Q&A

## Phone Attendees

- Press \*9 on telephone keypad to “raise your hand” during the Q&A to indicate you want to speak. Facilitator will unmute your mic.

## Online Attendees:

- Submit a question or comment any time in Q&A box.
- The “raise your hand” feature is available to all Zoom participants however we are prioritizing phone attendees.

## Facebook Live Attendees:

- Please feel free to participate in the “Comments Section.” Someone on our staff will make sure I see your questions.



Atlanta  
Beltline

# Poll Question #6:

**Was the information presented tonight helpful?**

- Yes
- No



Atlanta  
Beltline

# Poll Question #7:

**Did you learn something new?**

- Yes
- No
- Need more clarity



Atlanta  
Beltline

# Contact Information

## Atlanta Beltline Staff

- Brittany Brewster,  
*Community Engagement Manager*,  
[Bbrewster@atlbeltline.org](mailto:Bbrewster@atlbeltline.org)
- Claire Kern, *Senior Project Manager*, [CKern@atlbeltline.org](mailto:CKern@atlbeltline.org)
- Kevin Burke, *Director of Design*,  
[KBurke@atlbeltline.org](mailto:KBurke@atlbeltline.org)

## Contractor Groups

### WST Seg. 6

Andrea Greco, Root Design Studio,  
*Project Manager*,  
[agreco@rootdstudio.com](mailto:agreco@rootdstudio.com)

### Oakland City + Murphy Connector

Carley Rickles, Martin Rickles  
Studio, *Project Manager*,  
[carley@m-r.studio](mailto:carley@m-r.studio)