

Nearmap

Exec Summit

The Pendry, Park City UT



Case Study: Accelerating AEC Project Timelines with National Pre-built Asset Data

Dain Synhorst

Telecommunication Practice Lead, Kimley-Horn

Jon Lipinski

Co- founder & President, Ecopia AI

Bill Singleton

AEC Lead, Ecopia AI

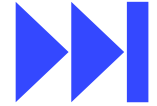
The background of the slide is an aerial photograph of a city grid, overlaid with a semi-transparent grid of red dots. A central dark blue rectangle contains the text.

Our vision & who we are

We empower civil engineering firms to scale client projects across North America



Better estimates



Expedited proposals



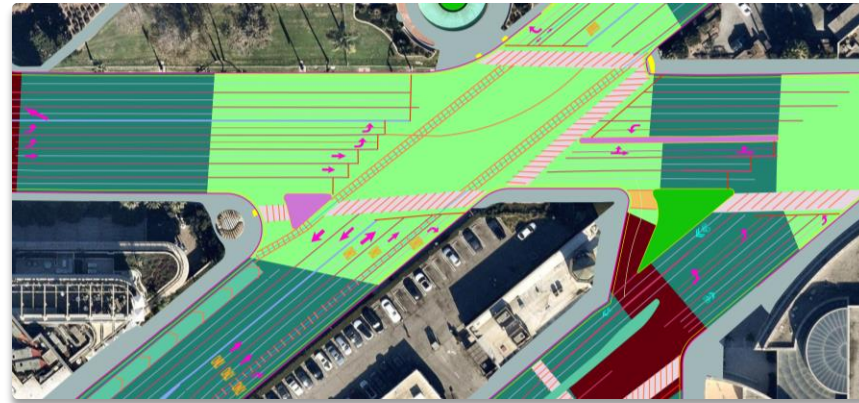
Increased efficiency



Improved success rate



Stormwater management



Transportation planning

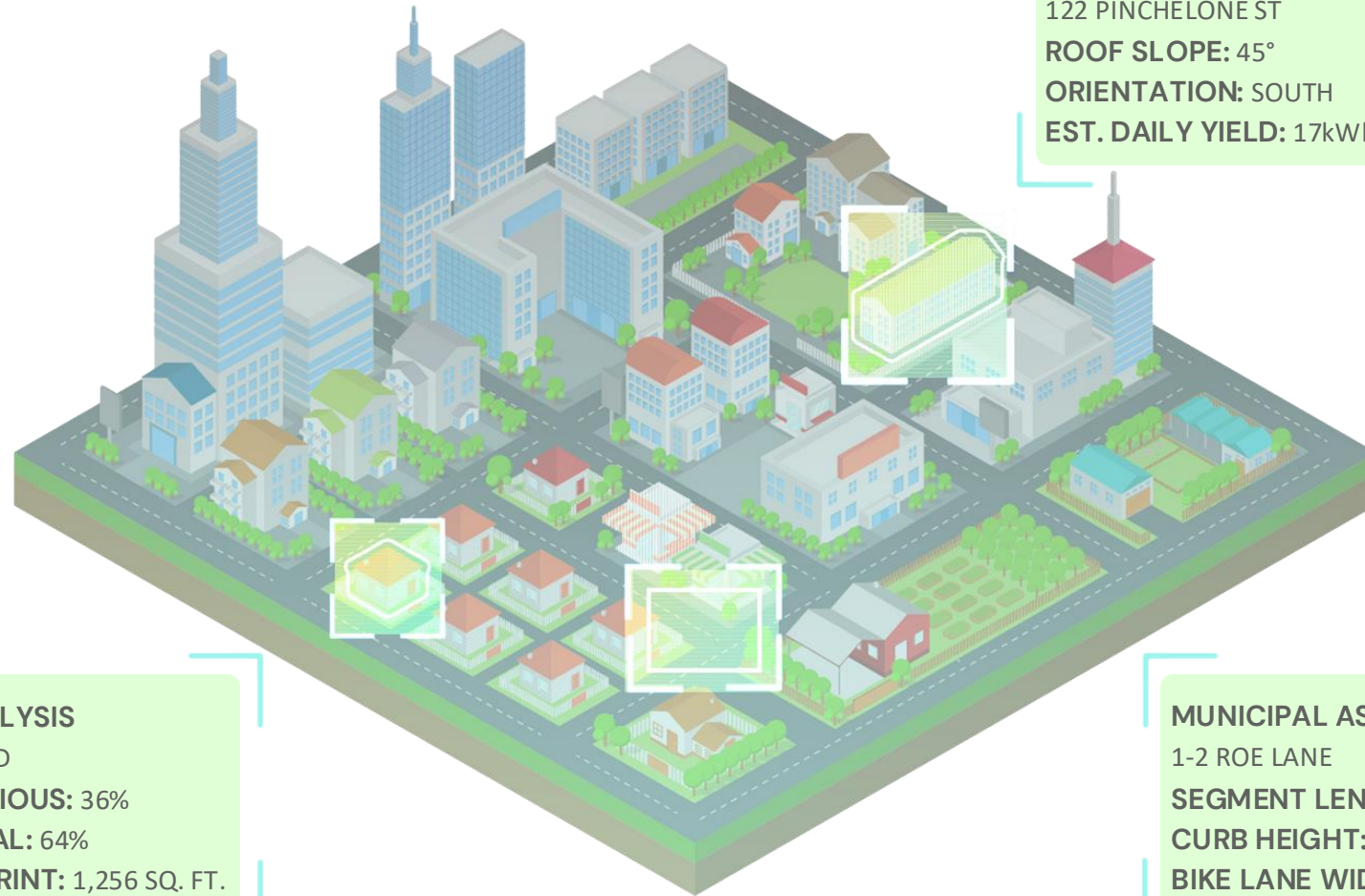


Utility work



Construction

Ecopia data is software agnostic, commonly used in popular geospatial tools and applications



SOLAR PANEL FEASIBILITY
122 PINCHELONE ST
ROOF SLOPE: 45°
ORIENTATION: SOUTH
EST. DAILY YIELD: 17kWh

IMPERVIOUS ANALYSIS
19 STONEYBROOK RD
PERCENT IMPERVIOUS: 36%
PERCENT NATURAL: 64%
BUILDING FOOTPRINT: 1,256 SQ. FT.

MUNICIPAL ASSET MANAGEMENT
1-2 ROE LANE
SEGMENT LENGTH: 82 FT.
CURB HEIGHT: 3 IN.
BIKE LANE WIDTH: 5 FT.



Trusted by hundreds of AEC & government firms

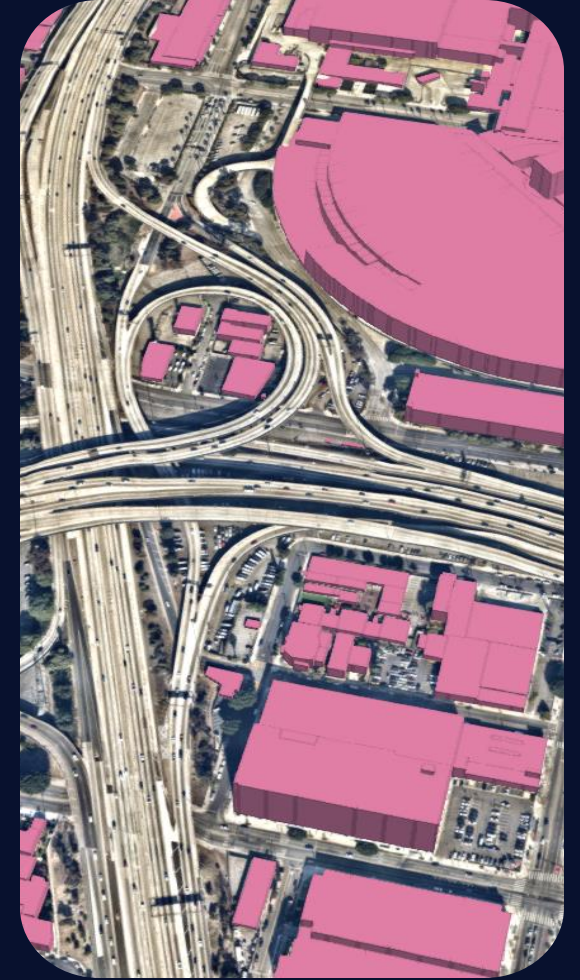
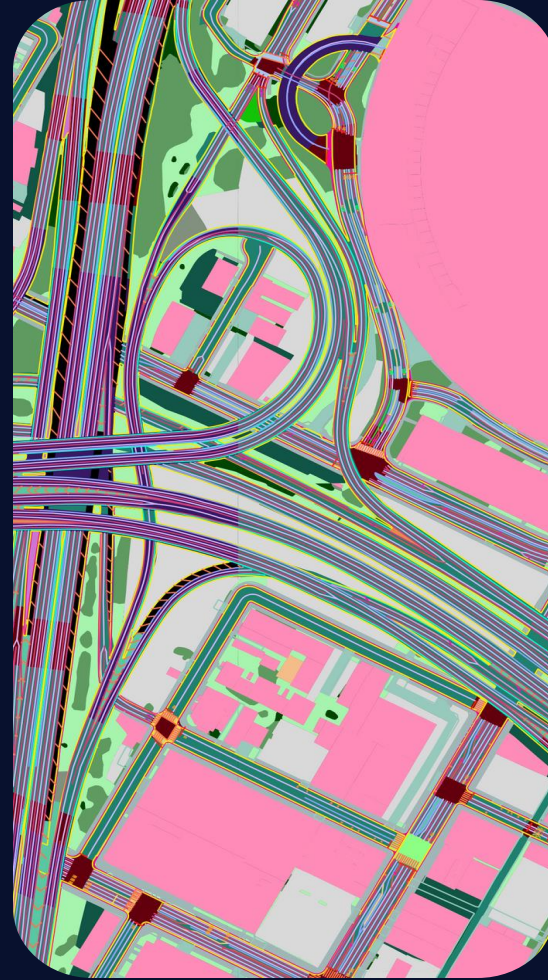
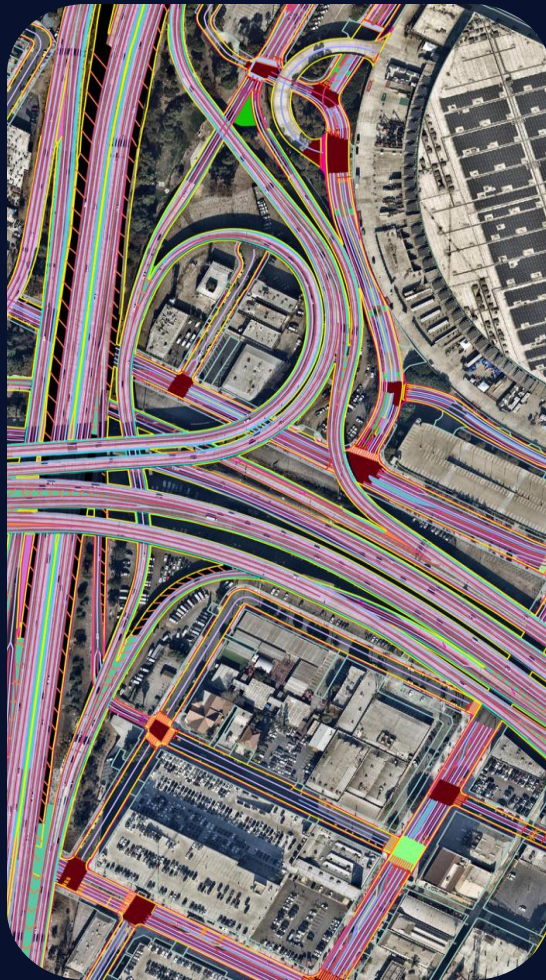
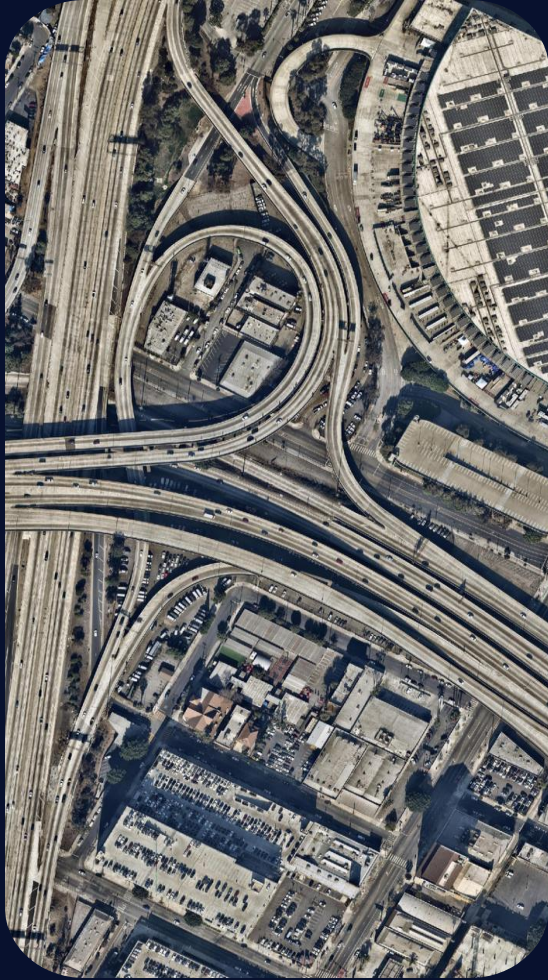
Civil engineering



Government



Our solutions



The world is changing incredibly fast, every day



Nearmap advantage: to see features of interest, imagery must be high-res (<4.5 GSD)



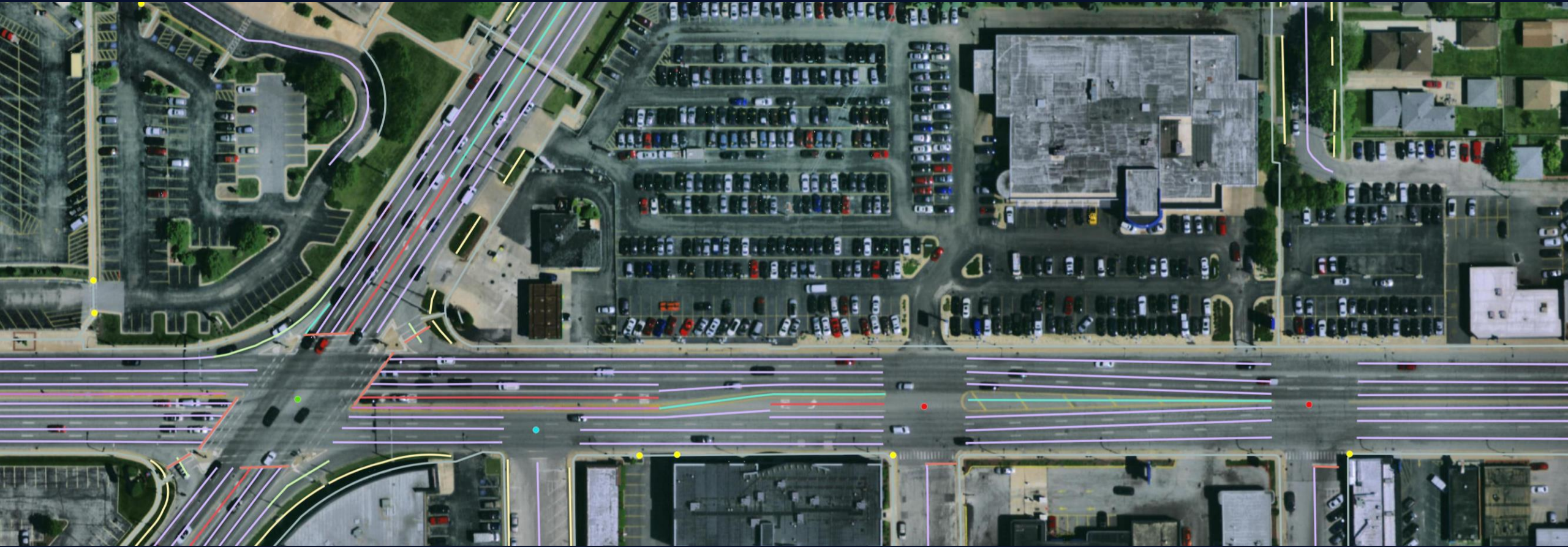
Nearmap advantage: to understand reality, data must be current (<6 month updating)



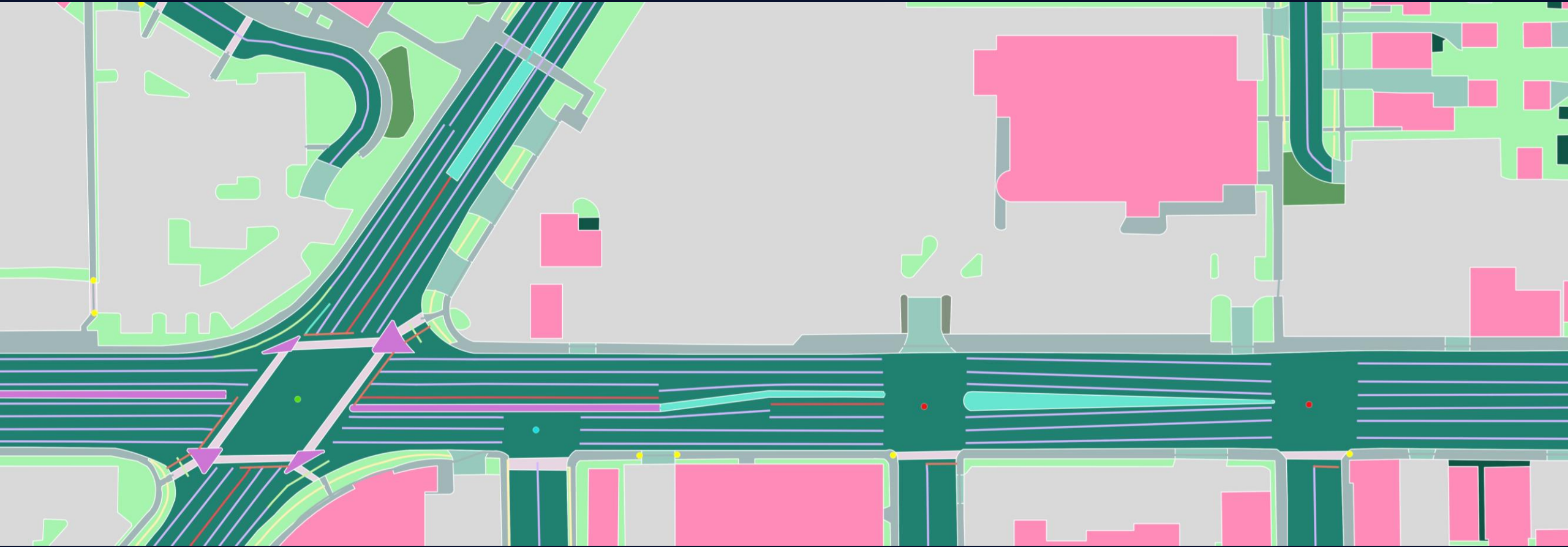
Planimetric data perfectly aligned with high-resolution, current Nearmap imagery



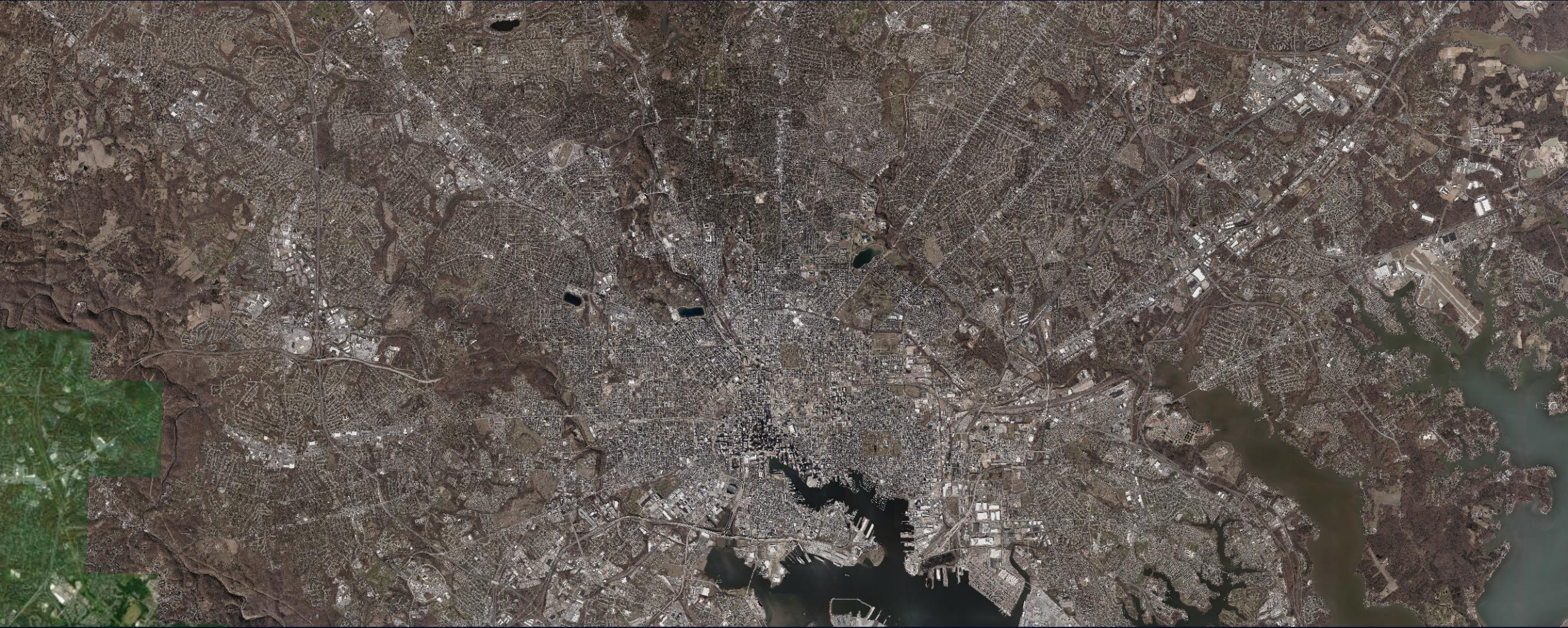
Planimetric data perfectly aligned with high-resolution, current Nearmap imagery



Planimetric data perfectly aligned with high-resolution, current Nearmap imagery

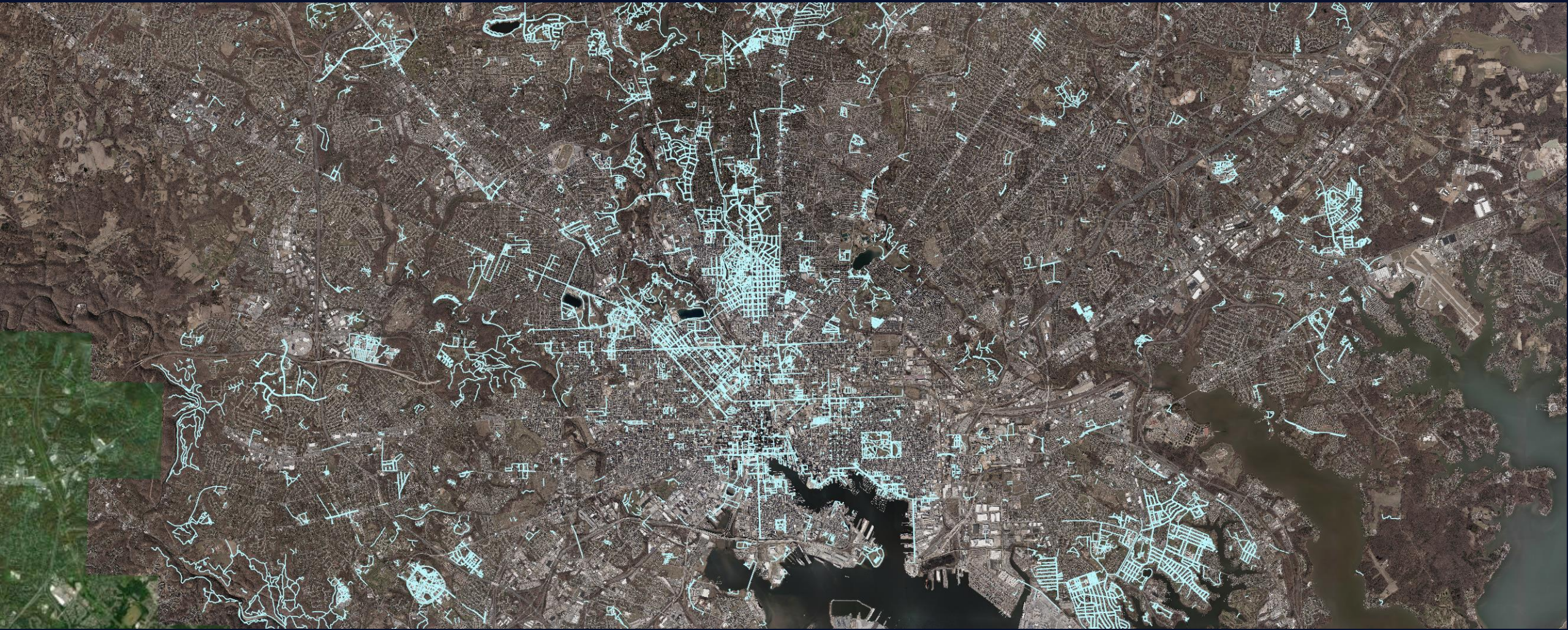


Problem: inconsistent, incomplete open data



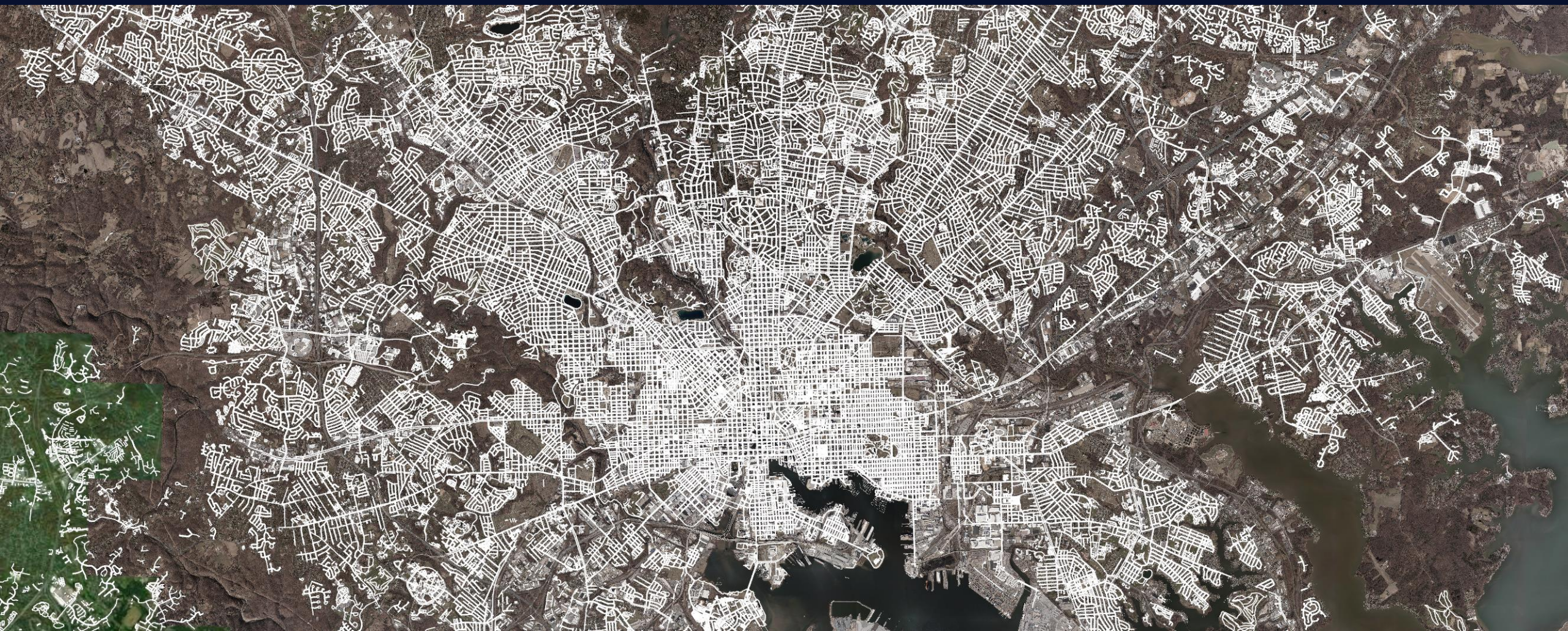
Regional aerial data

Problem: inconsistent, incomplete open data



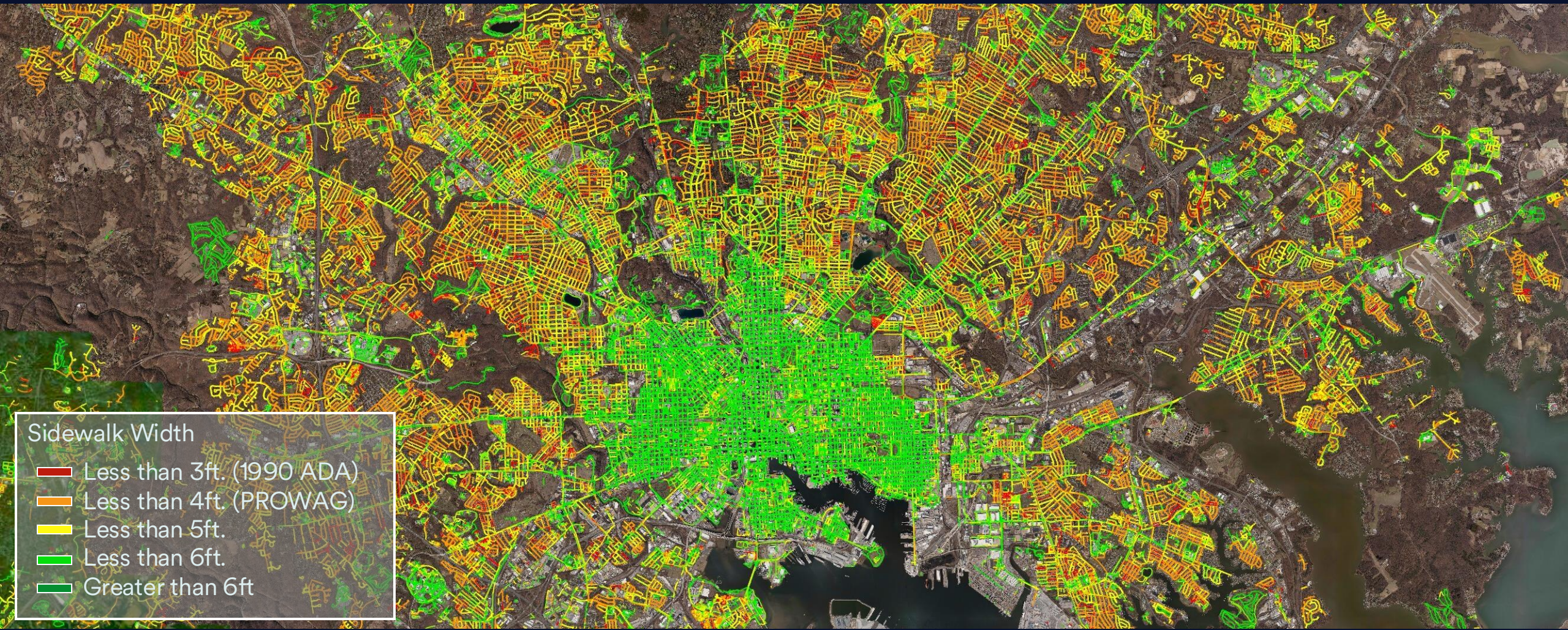
Open data of pedestrian walkways

Solution: detailed vector geometry data



Ecopia data of pedestrian walkways

3-6 inch resolution allows for attribution



Ecopia width-attributed pedestrian walkway data

Leaf on/off imagery is critical for specific applications



Leaf on/off imagery is critical for specific applications



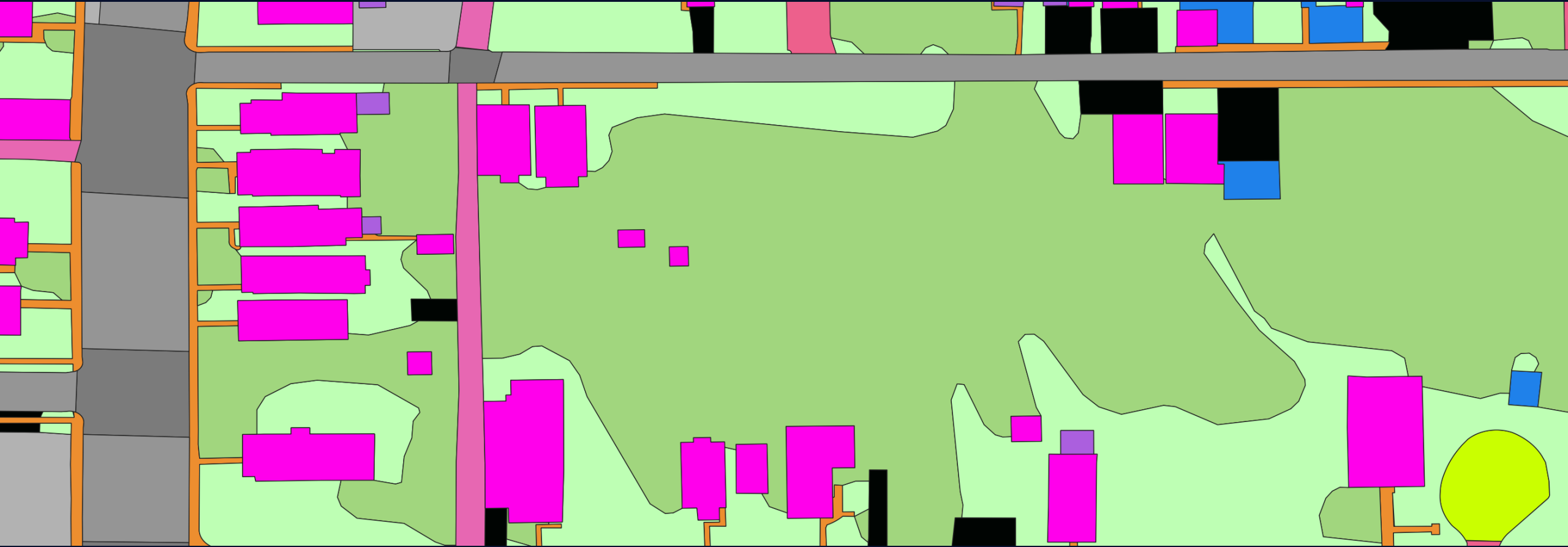
Leaf on/off imagery is critical for specific applications



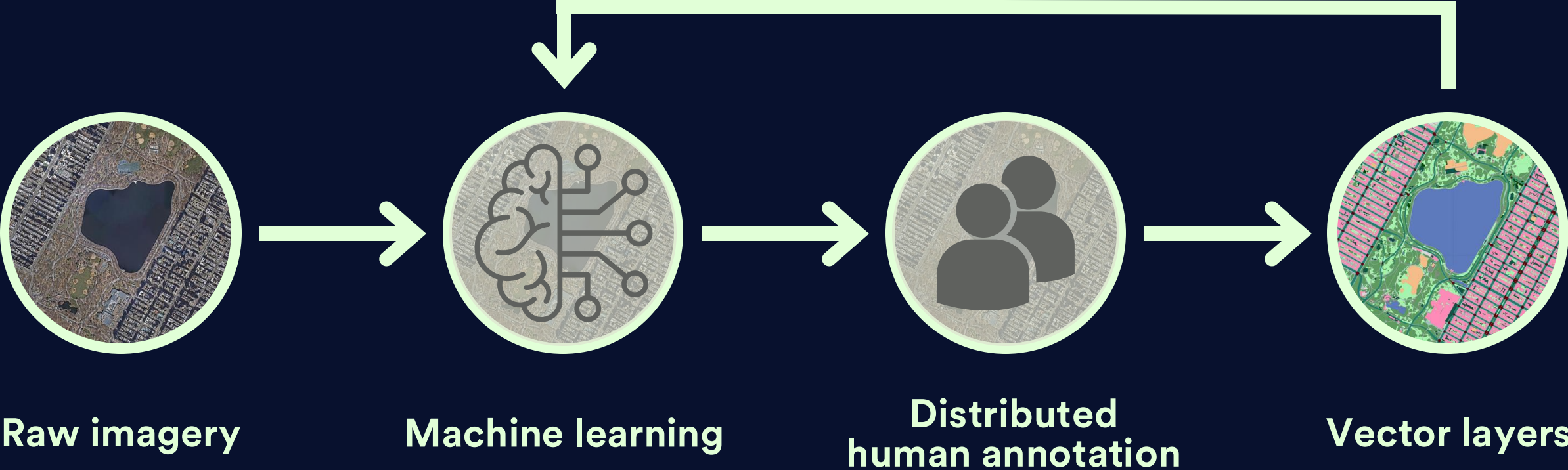
Leaf on/off imagery is critical for specific applications

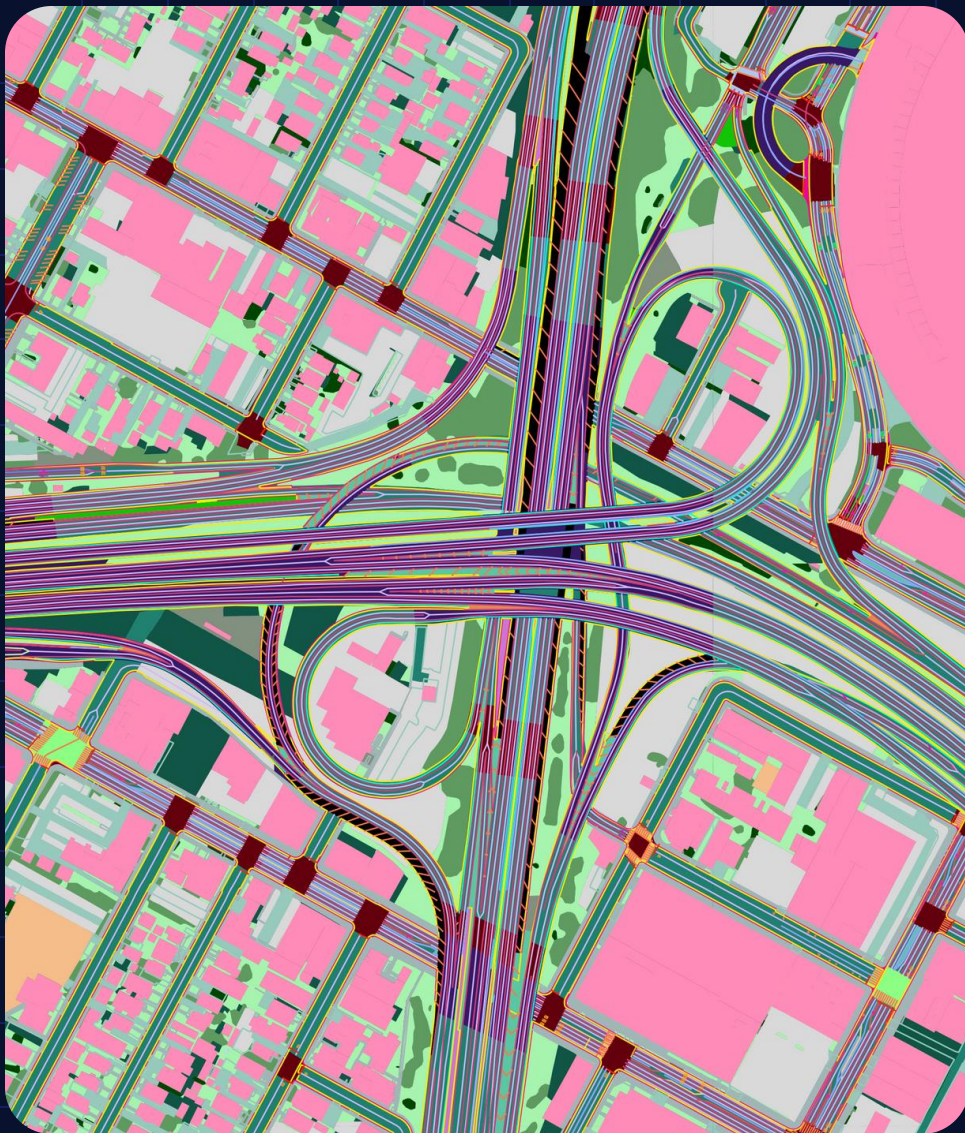


Leaf on/off imagery is critical for specific applications



Ecopia AI technology is the heart of this process

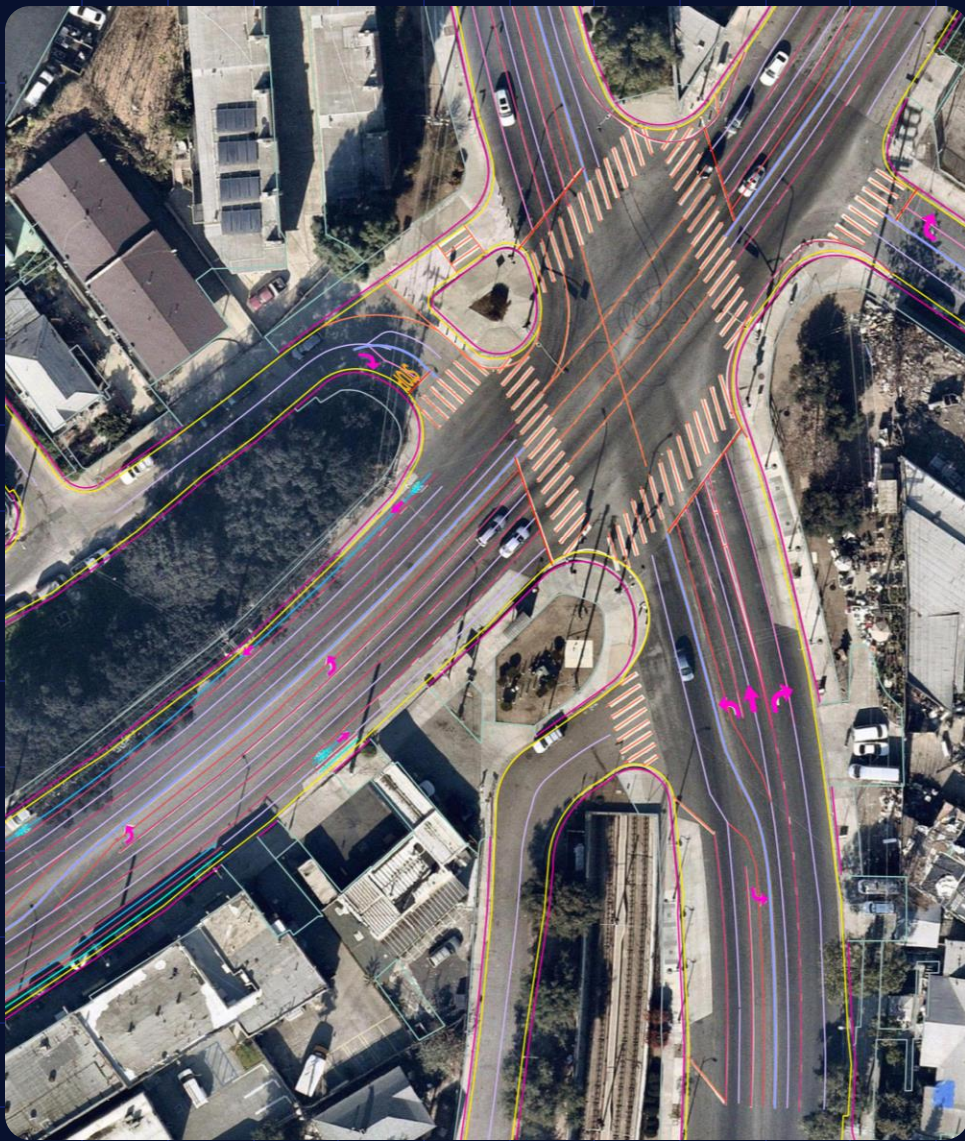




Data catalog

High-precision vector data across Nearmap's entire US coverage area

- 75+ planimetric impervious, natural, and transportation layers
- 3D buildings
- >95% geometric accuracy
- Available off-the-shelf for instant access



Case study

Kimley»Horn

Permitting & utilities

Ecopia works with civil engineers on various projects throughout the US that require highly detailed paint striping maps and data.

Our AI-based mapping systems extract high-precision paint features from high-resolution imagery to facilitate more efficient permitting for utilities and telecommunications engineering projects, as well as repainting them after projects have been completed.

Case study: Kimley-Horn

Company Overview

- Premier US planning, engineering & design consulting firm
- Founded 1967 in Raleigh, NC
- ~10,500 employees across 181 offices nationwide
- Estimated \$2.5B annual revenue (2025)
- 100% employee-owned

Core Services

- Transportation & roadway design
- Stormwater & integrated water management
- Land development & landscape architecture
- Environmental & energy consulting
- Aviation, transit & parking

Market Position

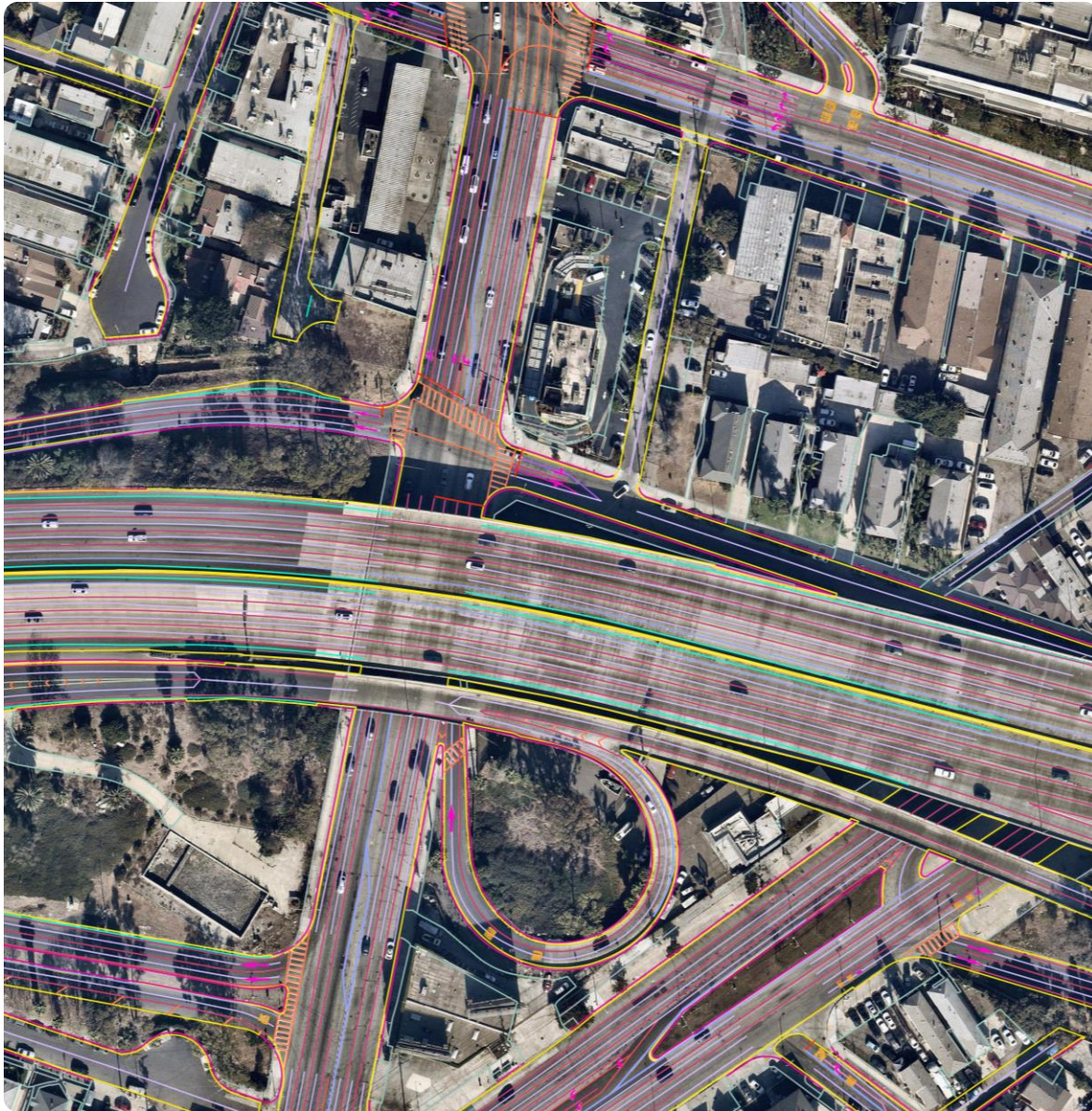
- #8 ENR Top 500 Design Firms (2025)
- #22 Fortune 100 Best Companies to Work For (2025, 18th consecutive year)



Dain Synhorst

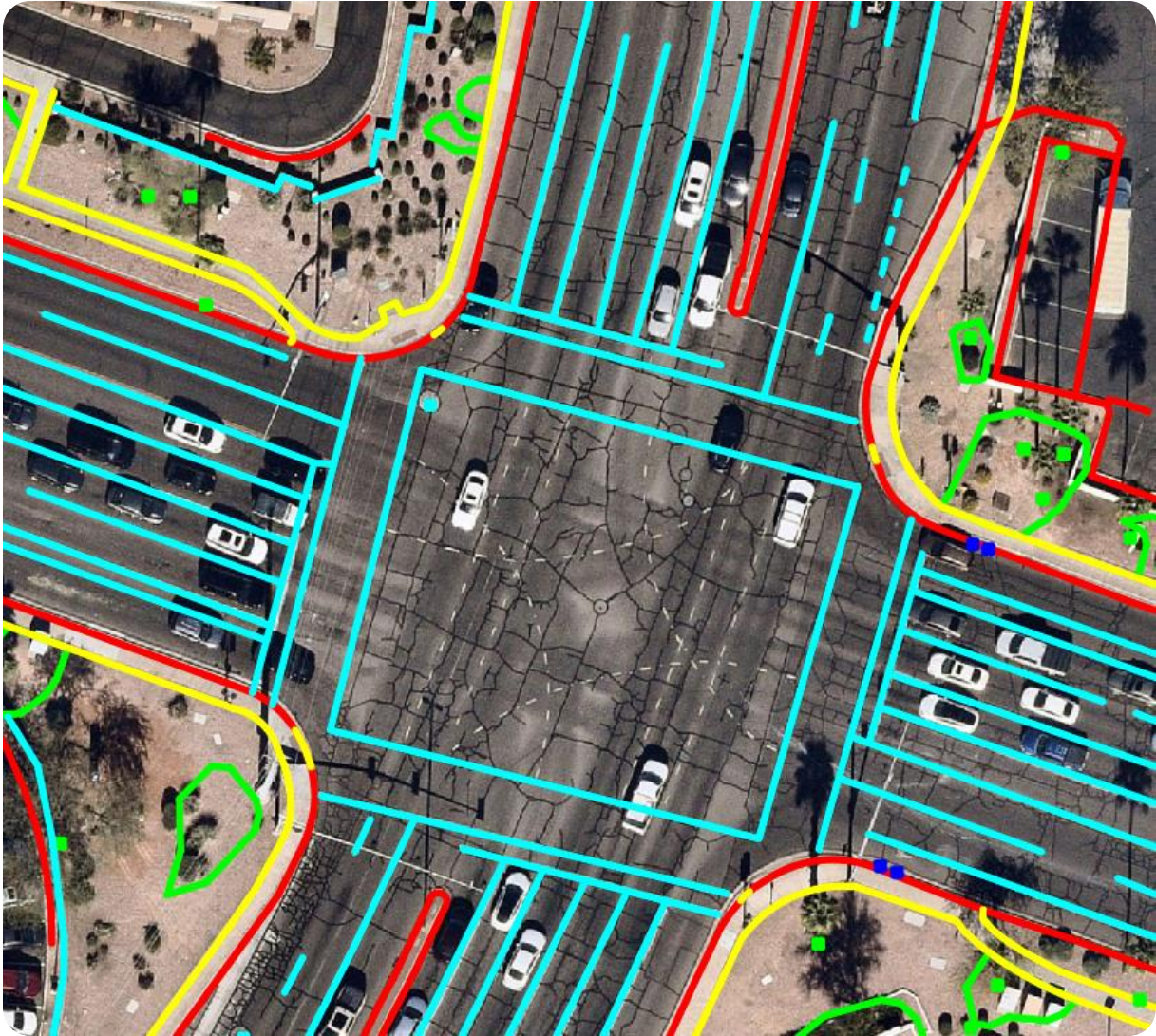
Twin Cities Telecommunications Practice Lead

- Located in Twin Cities St. Paul Office with 11 years engineering experience.
- Prior engineering practice of Development Services.
 - 5 years of developing and engineering sites from 2-500 acres.
- Moved to Telecommunication Infrastructure to help grow reach of practice in MW.
 - 5 years engineering and permitting wireless communication infrastructure.
- Currently utilizing Ecopia for base mapping of existing infrastructure.



Kimley-Horn & Ecopia partnership

- Ecopia partners with with Kimley-Horn engineers and planners on various projects throughout the US that require **detailed infrastructure mapping**.
- Ecopia AI-based mapping systems extract high-precision infrastructure features from high-resolution imagery to facilitate more efficient permitting for utilities and telecommunications engineering projects.
- In the first year of partnership Ecopia has engaged 42 Kimley-Horn employees over 11 different offices.

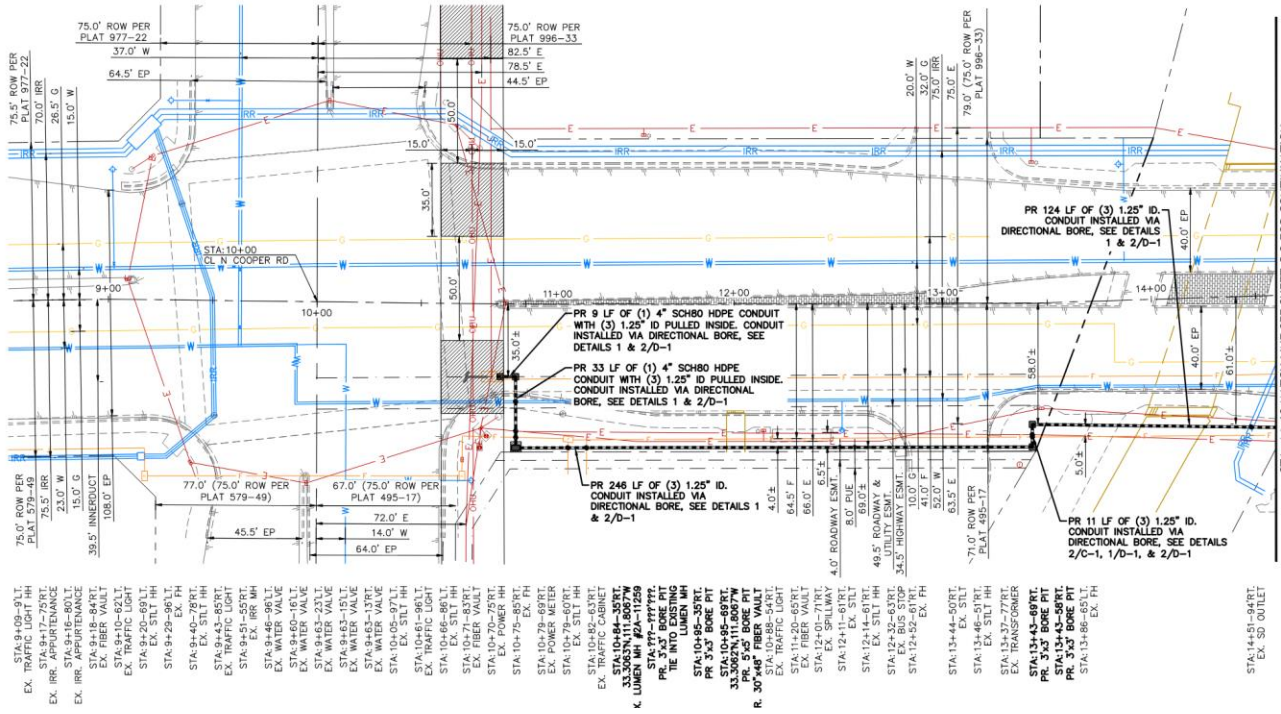


Private fiber network design and permitting case study

- **Scope of project:** Design and permitting of 75,000 linear feet of fiber optic infrastructure build public Right of Way.
- Approximately 750 sq. acres of existing features needing to be represented on construction plans.
- Past projects this was drafted by KH staff utilizing Nearmap imagery.
 - **Approximate total hours to previously base map – 250 hrs**
- Gives us the benefit of being more profitable while increasing time of delivery on construction drawings.
 - **Utilizing Ecopia total hours to complete base map – 50 hrs**
- 20% reduction in time to allocate back to design work
- Case study was delivered to KH in 7 days that would equate to approximately 3 KH employees working 2 weeks full time.

Solution: Ecopia & Kimley-Horn partnership

- Benefits KH to concentrate on delivering a high-quality product and highly reducing time on a remedial task.
- Up to date imagery from Nearmap ensures that KH are delivering accurate and up to date designs.
- Allows KH to increase timeline of deliverables to client that accelerates permitting times.



Data catalog

The screenshot shows the Ecopia data catalog interface for the '3D Land Cover' product. The interface includes a navigation sidebar on the left with options like 'Browse & Buy', 'Custom Orders', 'Data Review', 'Referral Program', 'Account', 'Help & Training', and 'Billing'. The main content area is titled '3D Land Cover' and features a 'My Cart' section. Under 'Product Selection', there are tabs for 'Road System', 'Nature', 'Standard 2D Land Cover', and 'Standard 3D Land Cover'. Below these are several checkboxes for feature selection, including Building, Swimming Pool, Parking, Pavement, Sport Ground, Road Segment, Road Intersection, Driveway, Sidewalk, Railway, Forest, Grass, Bare Land, Water, Shrub, Bridge, Tree Canopy, and 3D Building. The 'Product Specifications' section provides technical documentation links. The 'Delivery Settings' section includes a dropdown for 'Delivery Projection' (set to WGS84) and radio buttons for 'Delivery Format' (Shapefile (.shp), GeoJSON, Drawing Exchange Format (.dxf)).

>95%

Geometric accuracy

1.5M km²

Geographic coverage

87%

US population coverage

Change detection



Map change over time and space

Ecopia leverages our partnerships with leading geospatial imagery providers to continuously source fresh high-resolution imagery, enabling us to efficiently identify, quantify, and map changes to individual features over time across large geographic scales.

Features can be appended with change detection attribution, or unique vector layers for each vintage of imagery can be produced for easy comparison.

Examples include:

- Buildings
- Green space
- Sidewalks
- Impervious surfaces
- Roads
- Object change detection

Ecopia Data Hub

Nearmap

Jon Lipinski
Bill Singleton
Dain Synhorst

Contact details

bill@ecopiatech.com



10897 S River Front
Parkway, Suite 150
South Jordan, UT 84095