

Nearmap

Exec Summit

The Pendry, Park City UT



Exposing the Unknowns:

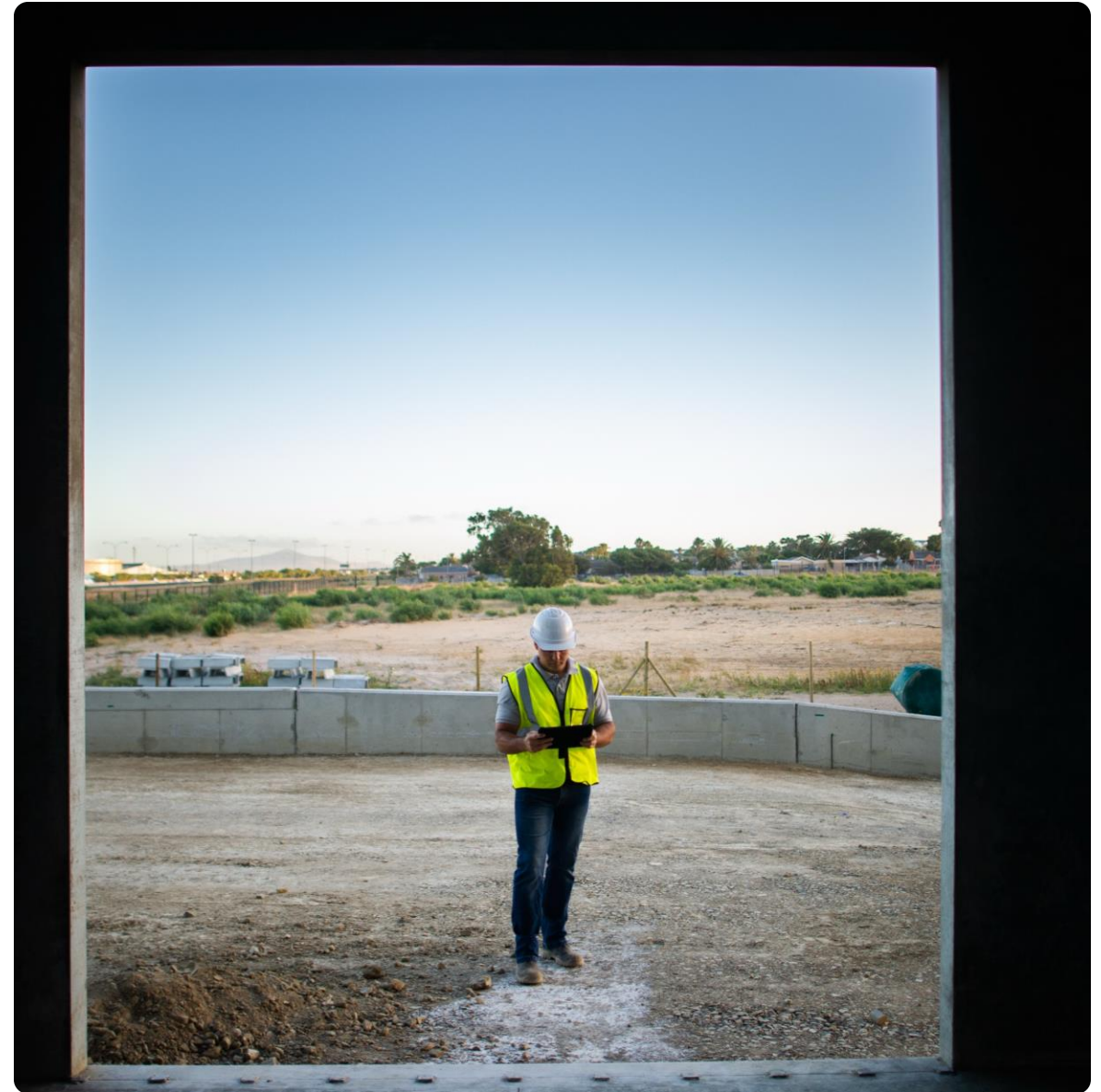
Leveraging Aerial Imagery to fuel Site Planning and Design

Moderators:

Matt Doherty, Scott Dukes

Session Agenda

- Introduction (Setting the Stage)
- Table Breakouts:
 - Intros: 5 min
 - Table Discussion: 20 min
 - Table Read-outs: 10 min
- Closing Remarks



Nearmap for Planning & Design

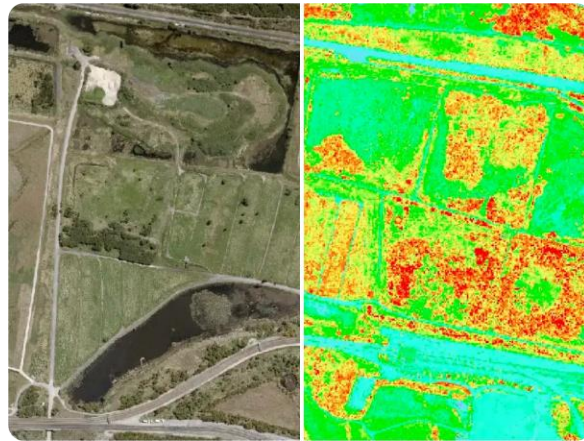
Nearmap = Less travels to the site for:

- **Feasibility studies**
- **Initial planning & logistics** featuring high-resolution data
- **Conceptual design** workflows using 3D imagery and pre-formatted AI layers

Historical Imagery



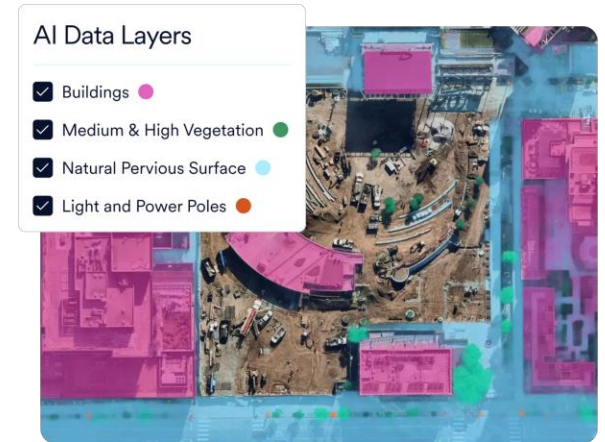
Infrared Filters



3D Models



AI Layers



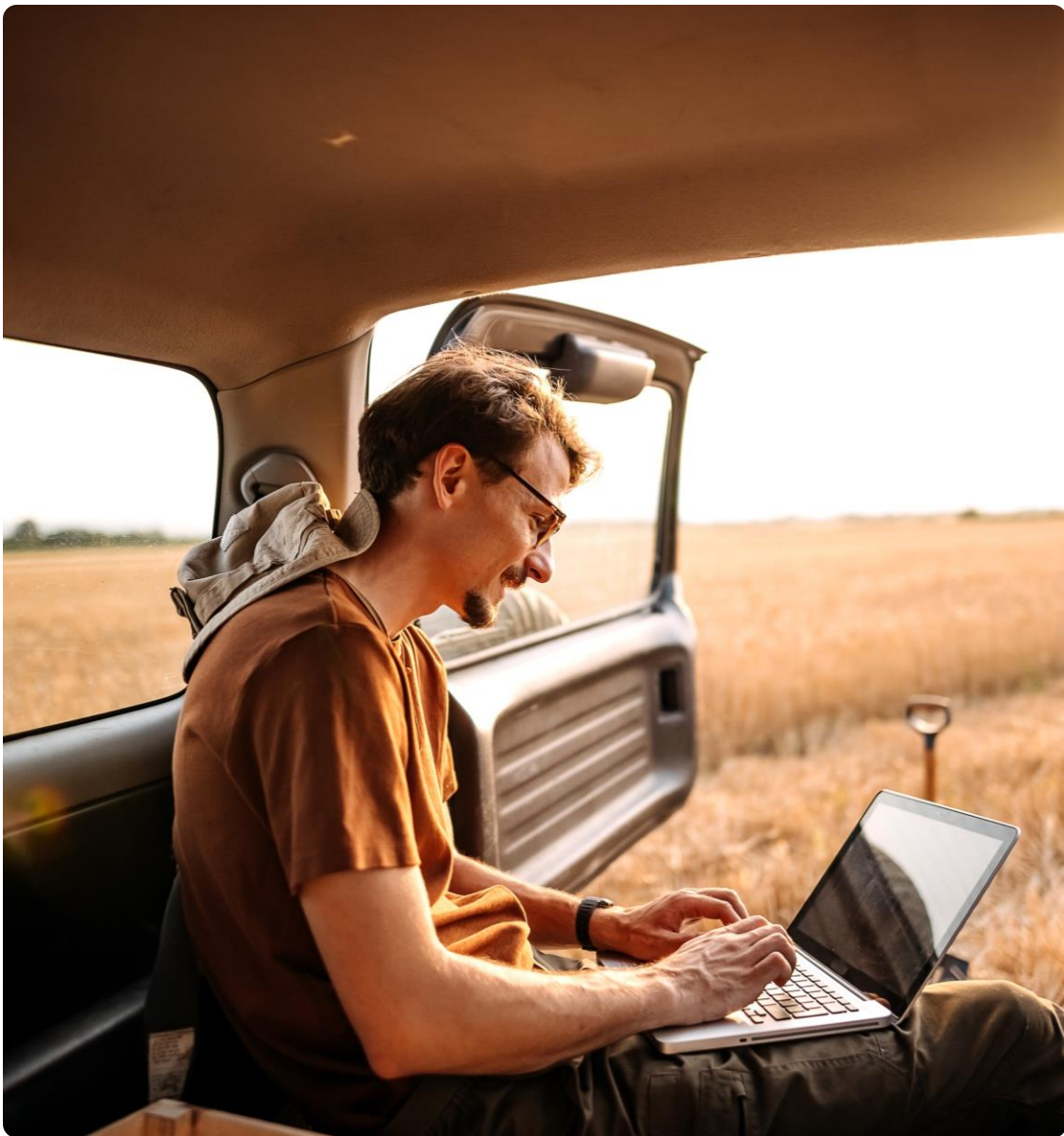


Table Discussion Topics

- 1. What have you learned by leveraging Nearmap for planning & design?**
 - Describe your workflow using Nearmap
 - What workflow(s) improved the most?
 - What decisions are now easier/faster?
 - Has it changed how you bid/estimate?
- 2. What do you need next to create more value?**
 - What data layers or analytics would be most valuable?
 - What integrations are lacking/missing?
 - Where could AI play a role/more of a role?
- 3. What is preventing broader adoption across your org?**
 - Internal champions?
 - Training/onboarding?
 - Budget?

Table Group Assignments

Group 1	
Dan Madden	The Garland Co
Eugene Amagash	Howard Hughes Corp
Joseph Zabroski	Huitt Zollars Inc
Jason Harkless	Jacobs
Dain Synhorst	Kimley-Horn & Associates

Group 2	
Ed MacDonald	Arcadis
Erin Atkinson	Halff Associates
Aaron Morris	Michael Baker Int
Luigi Armogida	The Garland Co
Jay Wratten	WSP

Group 3	
Brad Botting	BMO
Russell Gibson	Halff Associates
Elisha Ritchie	KCI Technologies
Ryan Noyes	Vanasse Hangen Brustlin

Nearmap