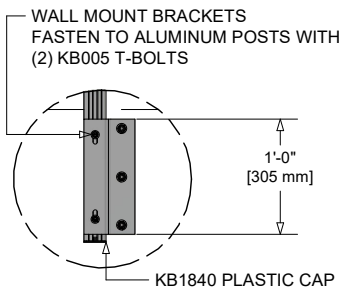
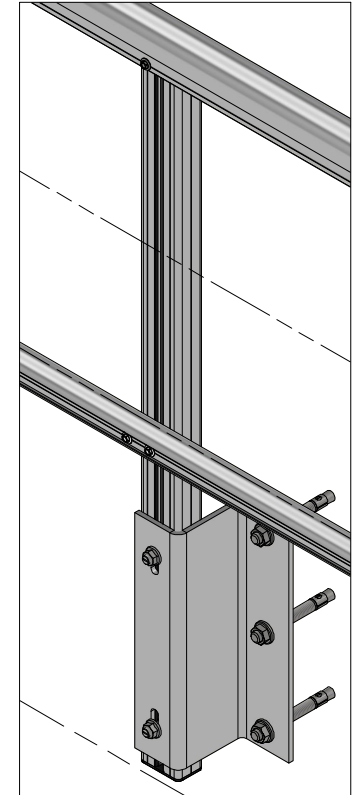
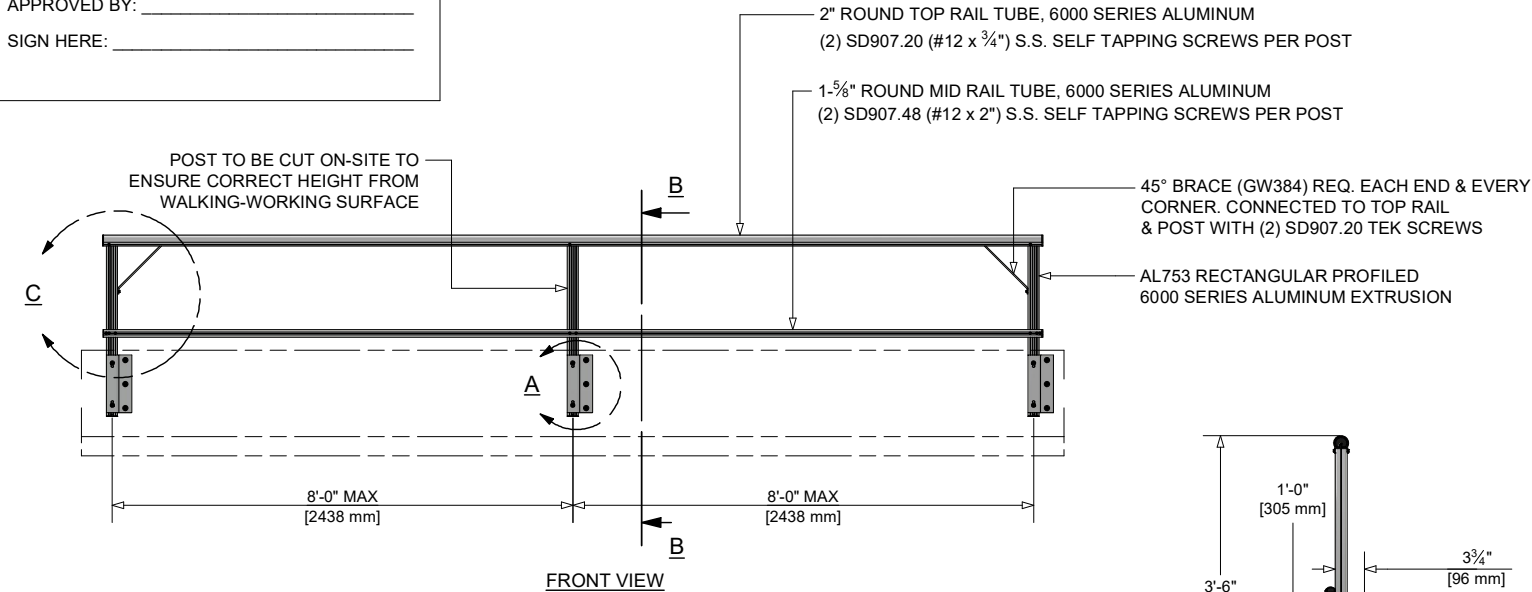
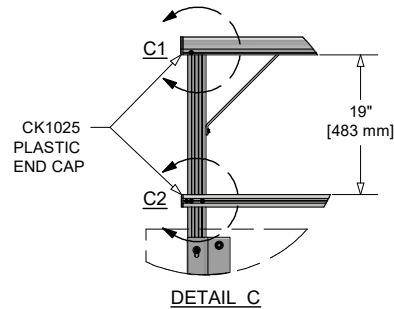


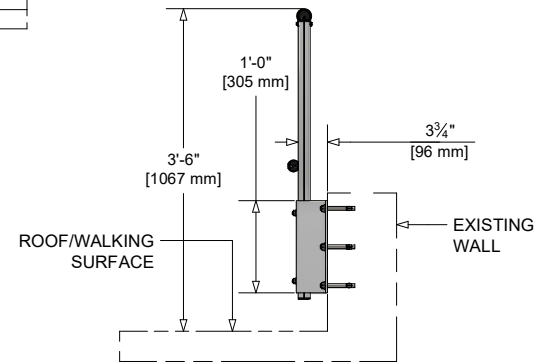
PROJECT REF: _____
CONTRACTOR: _____
APPROVED BY: _____
SIGN HERE: _____



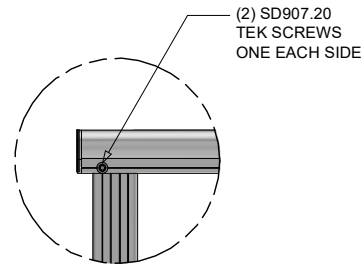
DETAIL A



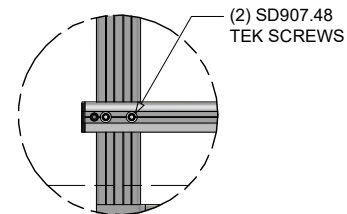
DETAIL C



SECTION B

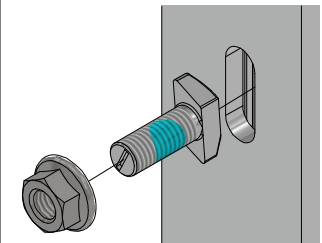


DETAIL C1



DETAIL C2

INSERT KB005 T BOLT THROUGH SLOT
AND FASTEN WITH LOCK NUT



KB005 BOLT MARKING MUST BE
PERPENDICULAR TO EXTRUSION SLOT



INCORRECT



CORRECT

RECOMMENDED WALL ATTACHMENT HARDWARE

- CONCRETE WALL**
(3) $\frac{5}{16}$ " X 3" SCREW ANCHOR (S/S RECOMMENDED)
- HOLLOW BLOCK / BRICK WALL**
(3) $\frac{3}{8}$ " X 5" S/S THREADED STUD WITH ADHESIVE SLEEVE (16 X 85)
(WITH S/S LOCK WASHER, FLAT WASHER AND NUT).
EPOXY: HILTI HIT-HY-200, HIT-HY-70 OR VF200PRO AND STAINLESS HARDWARE
- METAL WALL**
(3) $\frac{1}{2}$ " S/S BOLT SET OR TOGGLE ANCHOR
(WITH S/S LOCK WASHER, FLAT WASHER AND NUT).
MUST BE MOUNTED TO STRUCTURE.

Kattsafe
3921 PERRY BLVD
WHITESTOWN, IN 46075
TEL: 888 637 7872
SALES@KATTSAFE.COM

THIS DRAWING REMAINS THE PROPERTY OF KATTSAFE®
AND MAY NOT BE CHANGED WITHOUT WRITTEN PERMISSION

DESCRIPTION
INTERNAL WALL MOUNT
GUARDRAIL

MATERIAL
ALUMINUM

PRODUCT CODE
GR31

FINISH
MILL FINISH

1 : 8
PAGE 1 OF 1
DRN: LFP
DATE: 02/23/2024
SIZE: A
DWG No. GR31
REV.

REV	DATE	BY	APP	COMMENTS
-----	------	----	-----	----------