

# LADDER SUPPORT BRACKETS



---

Wall mounted ladder support bracket which provides a secure attachment point for portable ladders, preventing movement in any direction.



---

**Product brochure**  
Ladder support brackets



---

**Installation manual**  
Ladder support brackets

Find all related products and resources on our website  
[kattsafe.com.au](http://kattsafe.com.au)

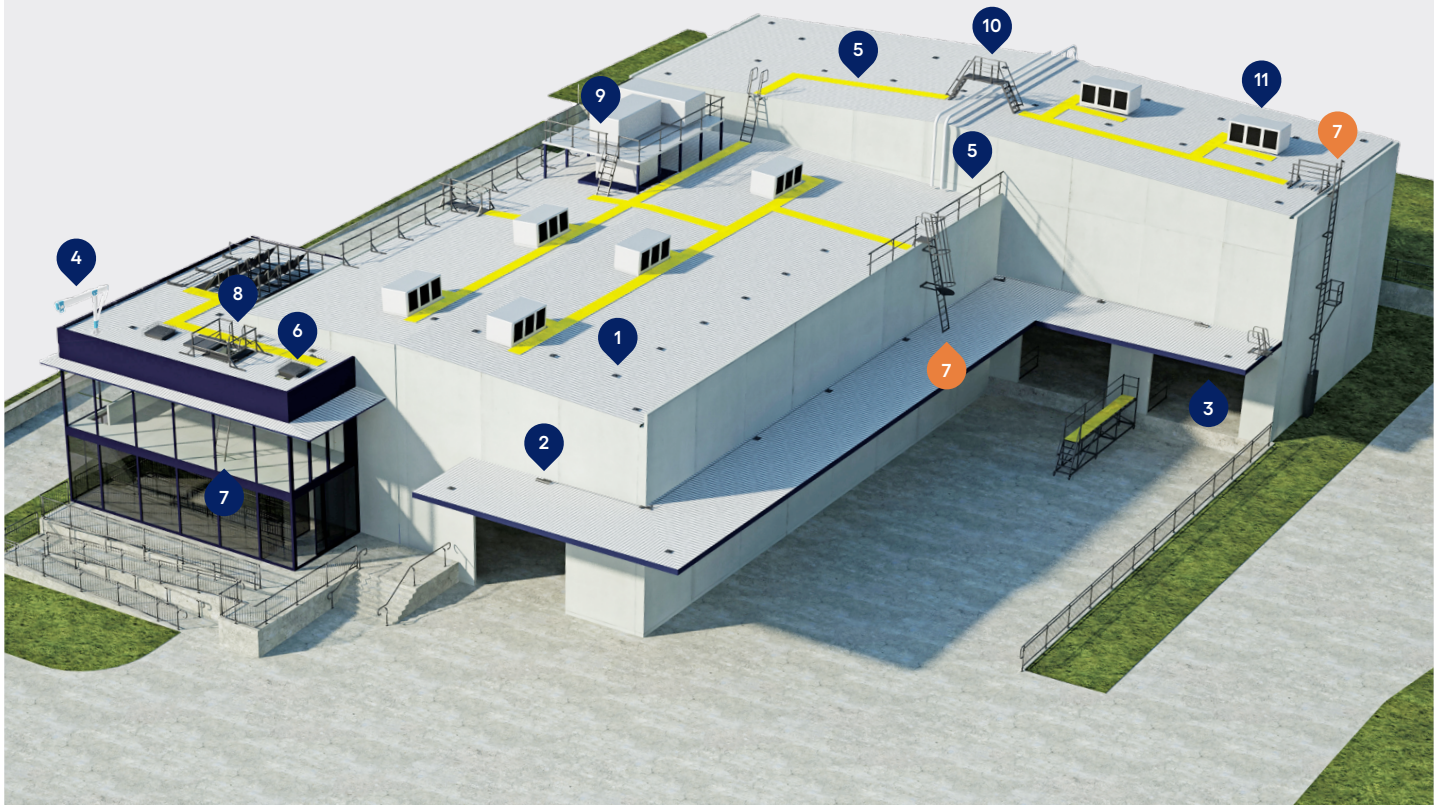
## Commercial building height access and fall protection requirements

Kattsafe leads the industry in the design, installation and management of access and fall protection safety systems.

The in-action model demonstrates access and fall protection requirements for a commercial building design. Kattsafe recommendations fulfill current workplace requirements for the safety of building maintenance subcontractors, employees and the general public.

For more information please contact Kattsafe.  
[kattsafe.com.au](http://kattsafe.com.au)

- 1 Anchor points
- 2 Static lines
- 3 Rigid rail
- 4 Davits and needles
- 5 Guardrail and walkway
- 6 Skylight protectors
- 7 Rung ladders
- 8 Access hatches
- 9 Platforms and stairs
- 10 Step ladders
- 11 HVAC platforms





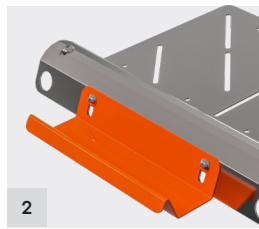
# LADDER SUPPORT BRACKET

Ladder support brackets for easy and secure ladder positioning



## Pitch adjustment

Allows attachment to varying roof pitches.



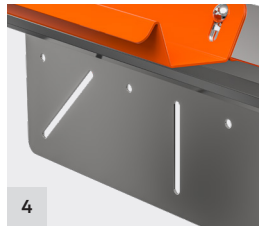
## Ladder rung support

Easy visibility and ladder attachment.



## Tie off points

Provides additional facility to secure ladder.



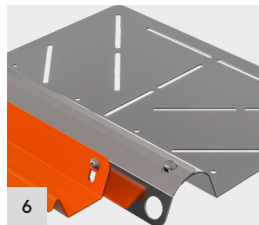
## Fixing slots

Ensures easy location for attachment to structure.



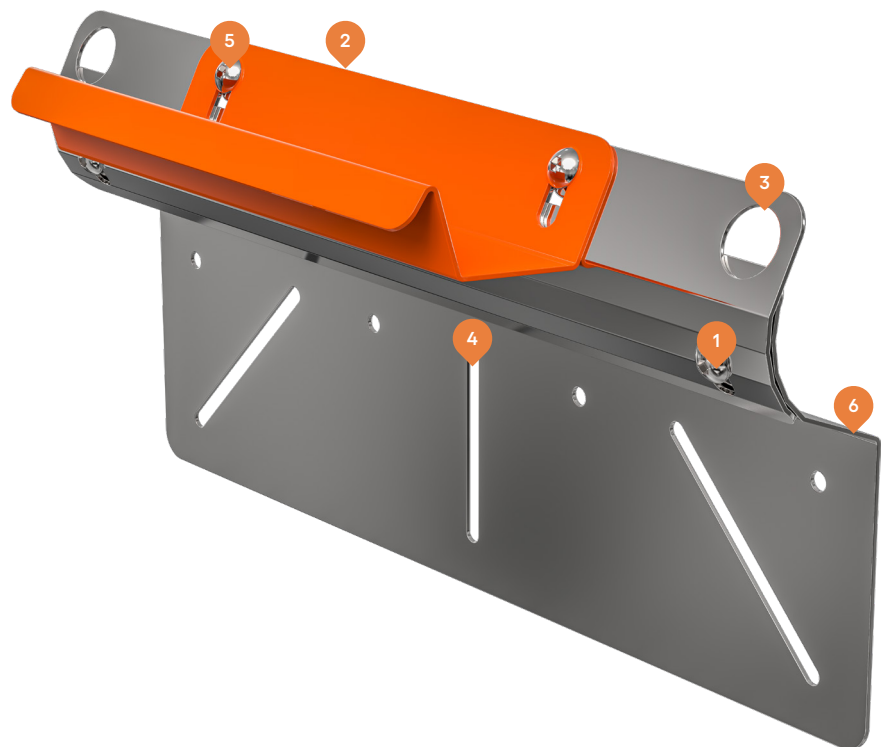
## Ladder angle adjustment

Allows attachment to angled surfaces with rung support kept level.



## Stainless steel

Heavy duty industrial grade construction.





The ladder support brackets for easy access onto roofs with no permanent access options, and preventing movement in any direction.

The profiled stainless steel plate is lightweight, making installation simple. Angle and pitch can be adjusted easily to suit the access situation, and the brackets are available in two mounting option, wall mount and gutter /parapet mount.

**Features and benefits of the system:**

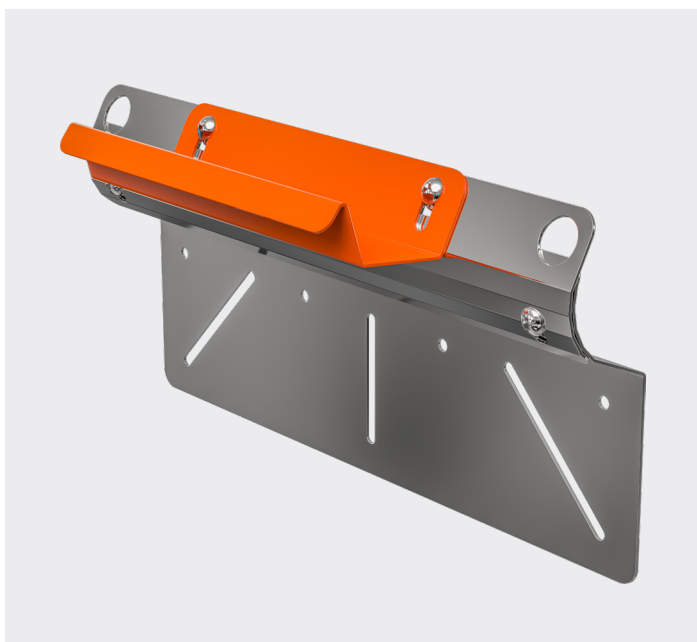
- Easy instalation with fixing slots.
- Llghtweight stainless steel construction.
- Available in wall mount or gutter/parapet mount options.
- Adjustable pitch and angle for easy ladder mounting.
- 150kg rated



# LADDER SUPPORT BRACKET RANGE

## LD401 Wall mount

For mounting to vertical walls



## LD402 Parapet/gutter mount

For mounting to gutters or parapets



---

# TECHNICAL SPECIFICATION

## Ladder support brackets

### LD401, LD402

Ladder support bracket which provides a secure attachment point for portable ladders. System design, supply, layout, installation and certification by a Kattsafe approved installer, as per the manufacturer's installation instructions and current standards.

#### Materials

Profiled stainless steel, powder coated

#### Dimensions

LD401: 480 (W) x 160 (D) x 240mm (H)

LD402: 480 (W) x 480 (D) x 70mm (H)

#### Weight

LD401: 2.3kg

LD402: 3.7kg

#### Fixings (refer to installation manual)

- Timber fixing: 14g/type 17 Tek screw x 4
- Metal fixing: 8mm bulb type rivet x 6 OR 14g into structure x 4
- Concrete fixing: 8mm x 75 screw bolt x 3 OR wedge type anchor x 3
- Steel structure: 8mm bolt set x 3

#### Substructure requirements

Support structure integrity, suitability and fixing method to be assessed and determined by a competent person prior to installation.

#### Rating

- 150kg rated, single person use

#### Compliance

Kattsafe ladder brackets are designed to conform with requirements of the Australian & New Zealand Standards AS/ NZS 1657:2018 and AS/ NZS1891 and relevant codes of practices and guidelines.

#### Testing

Testing and performance based on single person use (max 120kg) using an Australian Standards approved portable ladder.

#### Product warranty

10 Years from date of purchase subject to correct installation. Use and maintenance to be in accordance with manufacturer's specifications and recommendations.

#### Inspection and maintenance

Visual inspection for any damage or loose fixings must be done periodically and prior to use. No certified maintenance required. Basic wear/ tear preventative maintenance is recommended, as per manufacturer's specifications and recommendations (refer installation manual).

#### Important note

Failure to supply and/or install proprietary product in accordance with above standards and codes, specifications and instructions voids complete system certification and/or warranty



---

# WARRANTY INFORMATION

Warranty period on this system:  
10 years from date of purchase

**Should you have a warranty claim as a result of a defect the following procedure must be followed:**

Identify the following information:

- The product/system name and code number.
- The date of purchase/installation.
- Installation company details.
- The installation identification number.
- The name of the company using this system.
- A description of the defect/warranty claim.
- The periodic system maintenance report.

Forward the above information to [sales@kattsafe.com.au](mailto:sales@kattsafe.com.au) or contact technical helpline, 1300 301 755.

## Terms and conditions

All warranty claims must be made in writing within 14 days of the appearance of the defect.

Incorrect installation or work done by a non accredited Kattsafe system installer will void all warranty rights.

Systems that have been installed using non proprietary equipment will void all warranties.

System roof/cladding and concrete penetration seals are not covered in this warranty.

Systems/components that have not been maintained in accordance with manufacturer's/legislative requirements will void warranty.

Systems used by incompetent persons or use with non compatible accessories ie. harness gear, lanyards, travellers, fall arrestors etc. will void warranty.

Systems/components used for purposes other than their intended use will void warranty.

General wear and tear is expected and will depend on the frequency of use and is not covered by warranty.



---

**Product brochure**  
Ladder support brackets



---

**Installation manual**  
Ladder support brackets



---

**QMS Certification**  
ISO 9001:2015

Find all related products and resources on our website.  
[kattsafe.com.au](http://kattsafe.com.au)

# Kattsafe

Height access  
and fall protection

1029 Mountain Highway  
Boronia Victoria 3155  
Australia

1300 301 755  
[sales@kattsafe.com.au](mailto:sales@kattsafe.com.au)  
[kattsafe.com.au](http://kattsafe.com.au)