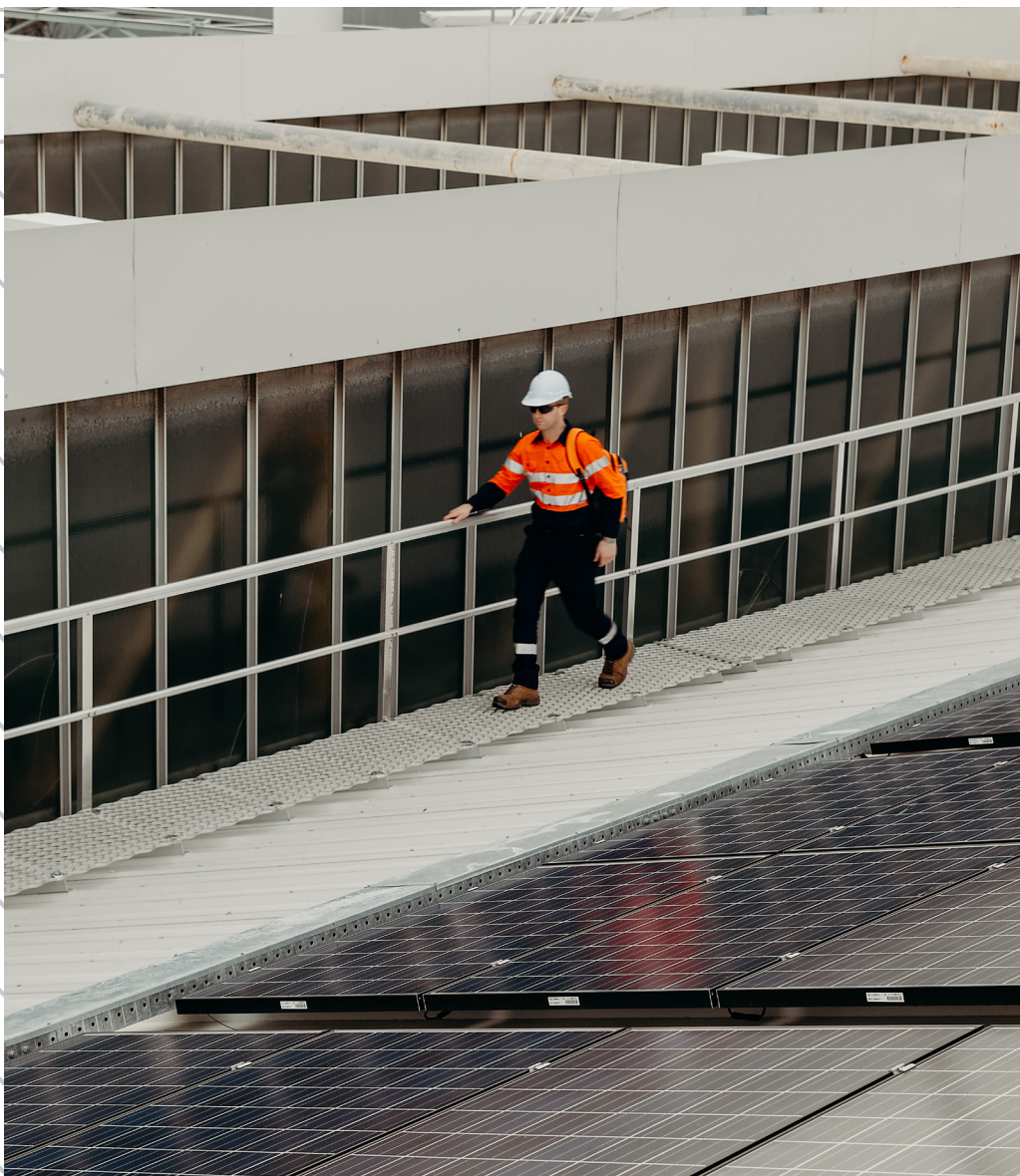


INSTALLATION MANUAL

WALKWAY



Kattsafe walkway provides fall protection and high strength safe designated access to roof mounted plant and equipment.



Product brochure
Guardrail and walkway



Installation manual
Guardrail



Installation manual
Walkway

Find all related products and resources on our website
kattsafe.com.au

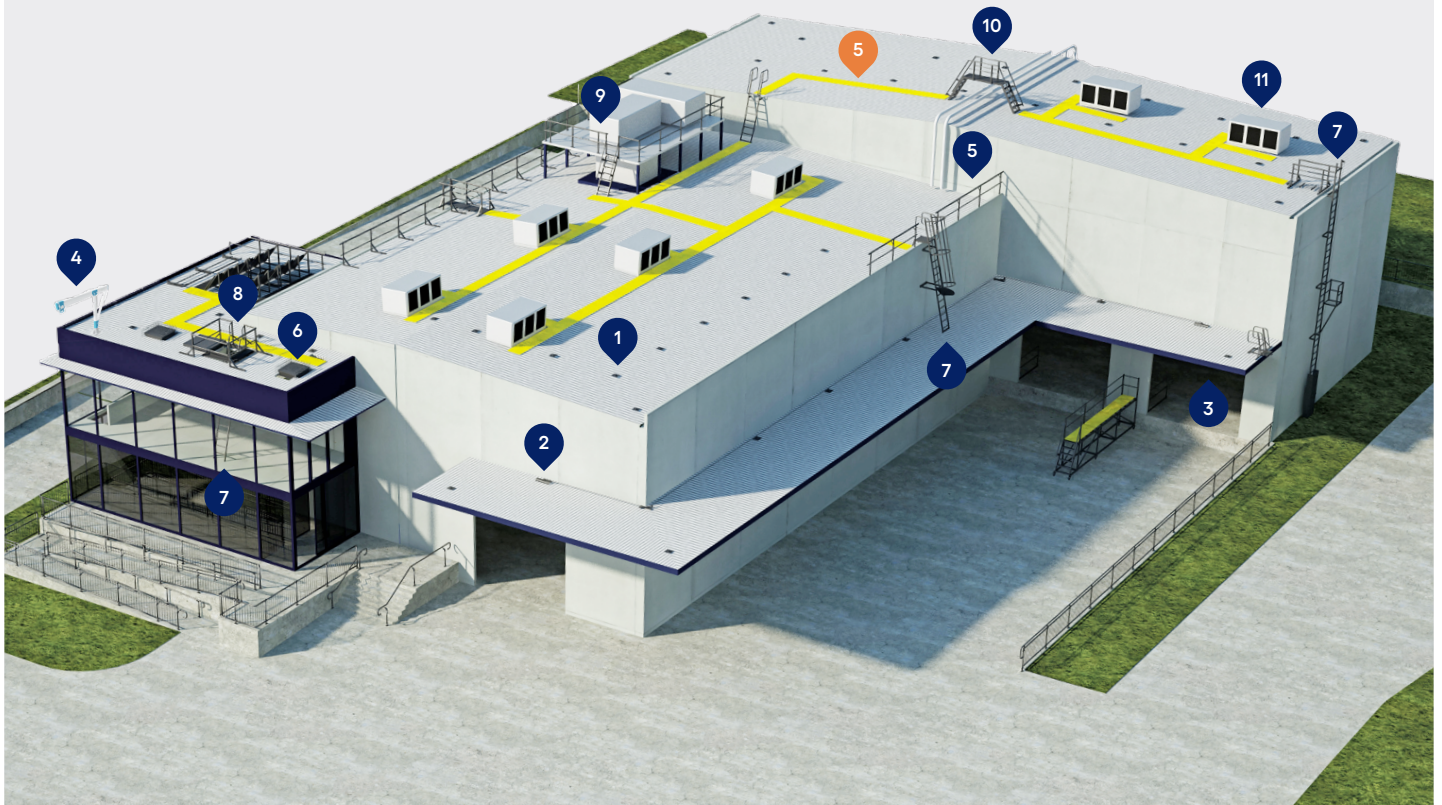
Commercial building height access and fall protection requirements

Kattsafe leads the industry in the design, installation and management of access and fall protection safety systems.

The in-action model demonstrates access and fall protection requirements for a commercial building design. Kattsafe recommendations fulfill current workplace requirements for the safety of building maintenance subcontractors, employees and the general public.

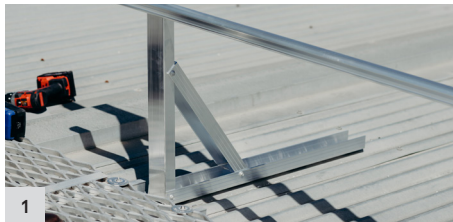
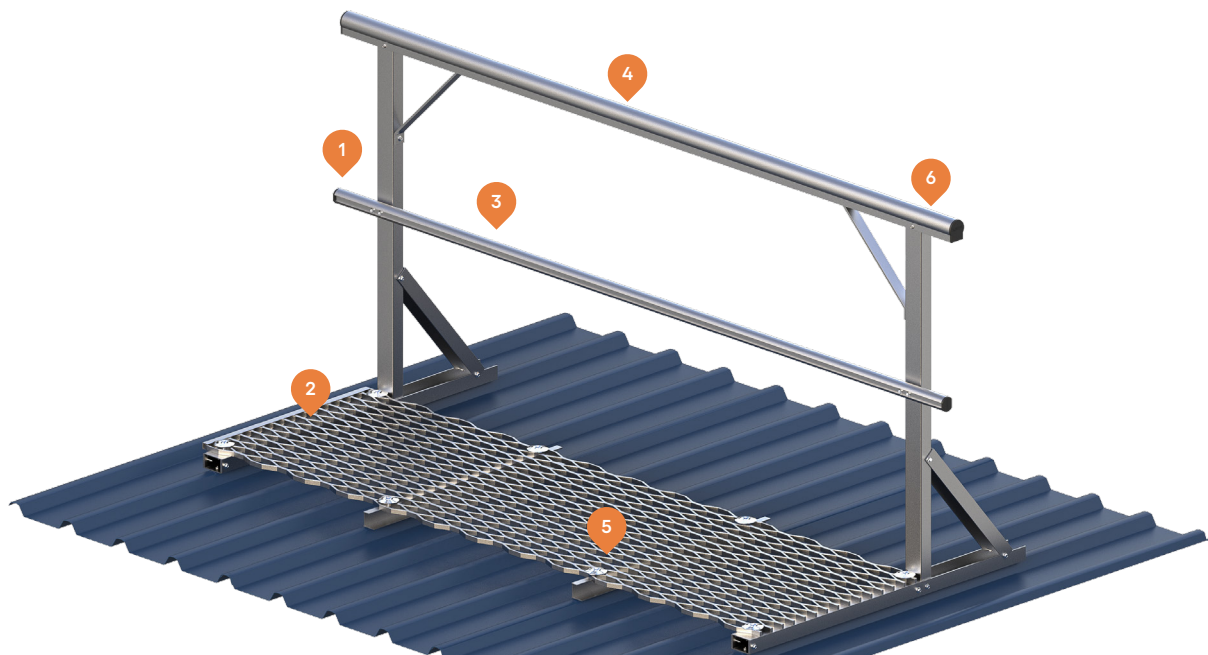
For more information please contact Kattsafe.
kattsafe.com.au

- 1 Anchor points
- 2 Static lines
- 3 Rigid rail
- 4 Davits and needles
- 5 **Guardrail and walkway**
- 6 Skylight protectors
- 7 Rung ladders
- 8 Access hatches
- 9 Platforms and stairs
- 10 Step ladders
- 11 HVAC platforms



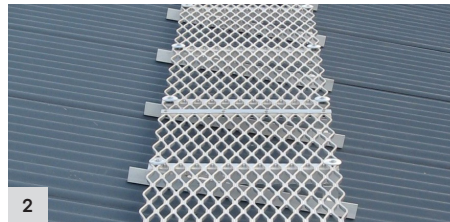
GUARDRAIL & WALKWAY

Lightweight guardrail and walkway providing high strength safe access and fall protection solutions for workers at heights.



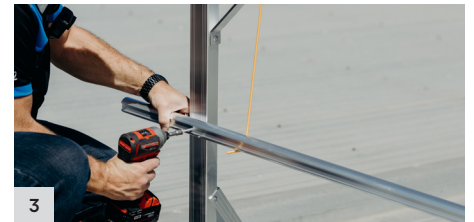
Lightweight construction

All guardrail and walkway components are manufactured from high strength aluminium, ensuring handling and installation is simple.



Knurled walkway

The small grooves on the walkway allow a better grip, creating a non-slip surface to walk on.



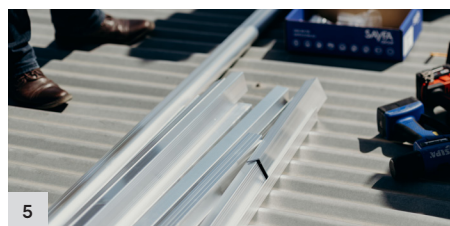
Pre-fabricated modular guardrail

The modular guardrail components and fixings allow for a fully adjustable system to fit varying applications and on-site requirements.



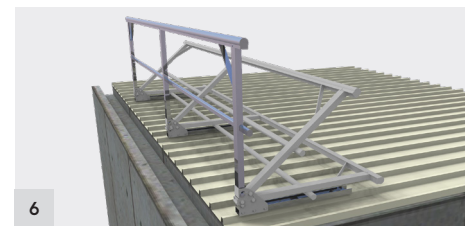
Low profile

The guardrail and walkway has an unobtrusive appearance with the option of powder coating to blend in.



Minimal components

Reducing on-site labour and removing the need for any specialist tools or equipment with easy to use, minimal components.



Additional option for a fold down design

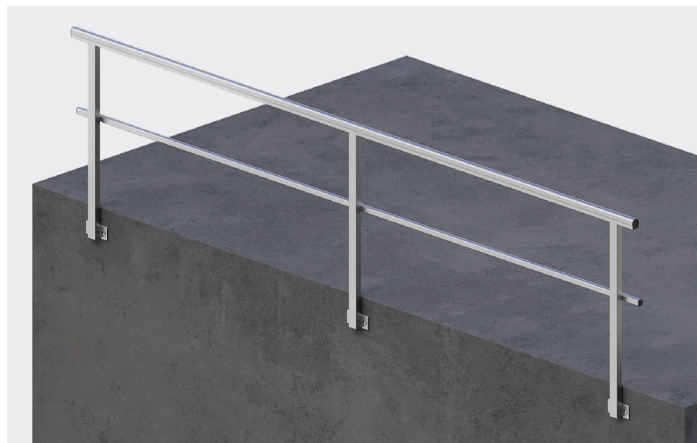
Provides the opportunity to be stored out of sight when not in use, eliminating visual impact in architectural sensitive locations.

GUARDRAIL & WALKWAY CONFIGURATIONS

GW1 Guardrail with baseplate - top mount



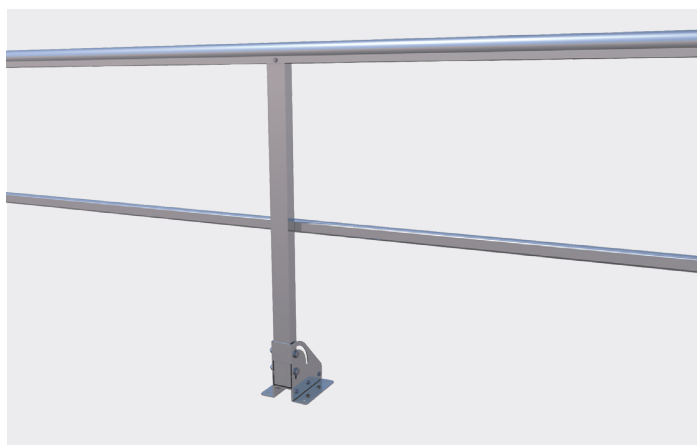
GW2 Guardrail with baseplate - side mount



GW3 Guardrail - metal deck mount



GW31 Fold down guardrail - concrete mount



GW32 Fold down guardrail - metal deck mount



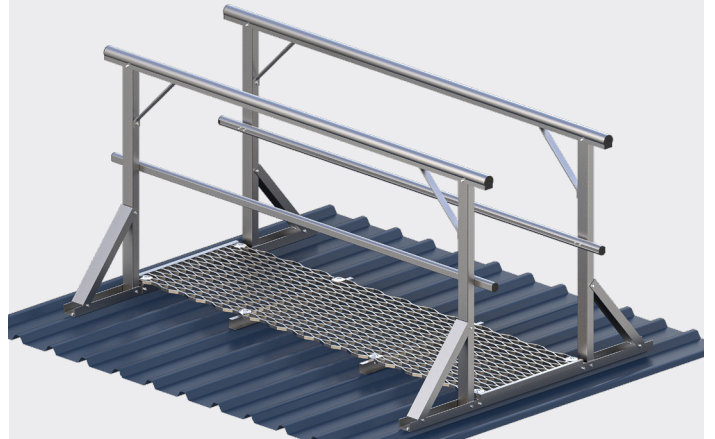
GW4 Walkway with guardrail one side - metal deck mount



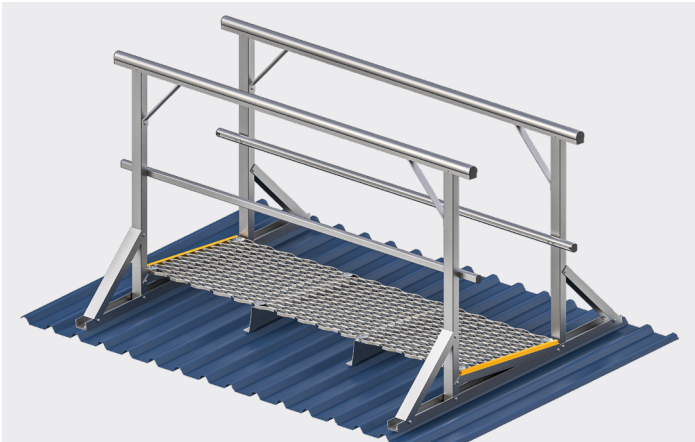
GW5 Walkway with guardrail one side - levelled metal deck mount



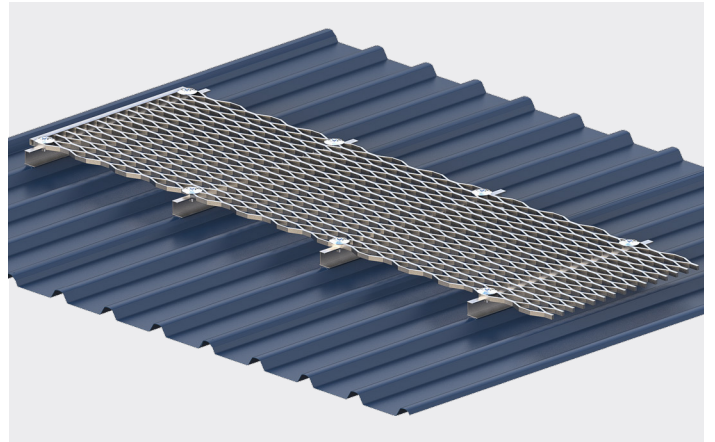
GW6 Walkway with guardrail both sides - metal deck mount



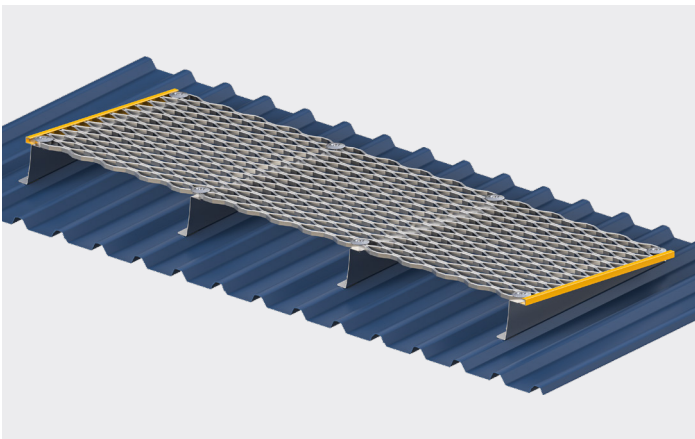
GW7 Walkway with guardrail both sides - levelled metal deck mount



GW8 Walkway

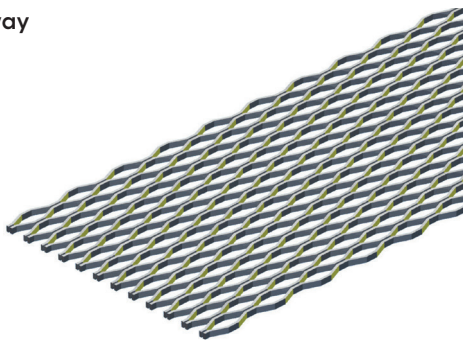


GW9 Walkway - levelled

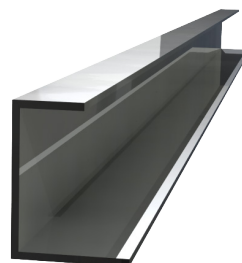


WALKWAY COMPONENTS

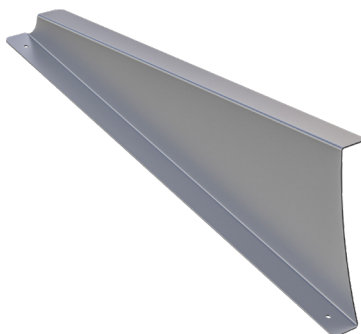
Aluminium walkway



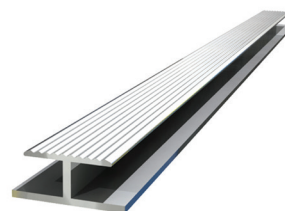
C - Channel batten



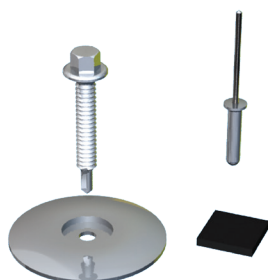
Folded batten bracket



Joiner bar



Fixings



TOOLS AND EQUIPMENT

Cordless drill



8mm metal drill bit



5/16 nut setter



Pitch meter



Tape measure



Drop saw



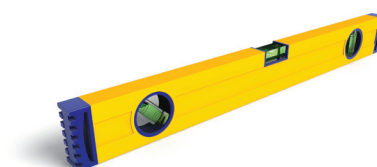
Battery powered or hand operated Gesipa riveter



Marking pen



Spirit level



INSTALLATION REQUIREMENTS

Must be read prior to installation

1. This system must only be installed by competent persons trained in the selection, use and maintenance of access systems.
2. Persons installing this system are required to have a comprehensive knowledge of the Australian Standards, codes of practice and industry guidelines that relate to the selection, use and maintenance of access systems.
3. Integrity and suitability of the structure to which this system is attached must be approved by a structural engineer unless it is clear to a competent person as to the suitability of connection to structure.
4. Read installation and operating instructions carefully before commencing any work. Consent to deviate from the installation guide must be obtained in writing from the manufacturer.
5. Conduct an initial work/risk assessment, and take all reasonable precautions to eliminate or control potential hazards and risks during the installation of this product.
6. Complete all necessary OH&S documentation, including a Job Safety Analysis and Work Method Statement and obtain consent from responsible person in workplace prior to commencement of work.
7. Do not modify or remove any element of the support structure without prior authorisation by a qualified engineer.
8. Any re-routing of electrical and/or other services must be carried out by qualified or authorised personnel.
9. Appropriate temporary access and safety equipment must be used during installation, such as platform ladders or scaffolding and fall protection anchorage points.
10. In case of emergency access and fall arrest systems must be installed by a minimum of two persons.
11. Do not tamper with, modify or remove any part this system unless authorised by the manufacturer.
12. Appropriate labels or markings must be attached to each system and include the following:
 - Service entry date
 - Next examination/service due date
 - Maximum designed load ratings
 - Installer/Certifier contact details
13. Documentation confirming correct use and maintenance of the system and equipment must be provided to the workplace manager on completion of installation. (See operation manual).



Kattsafe instructions and recommendations, drawings and diagrams, and all other documentation are copyright, errors and omissions excepted, and must be carefully read and implemented. Any assistance or guidance given is without prejudice, and Kattsafe cannot be held responsible for any inaccuracy or misinterpretation whatever. Failure to follow site installation requirements and warnings, may result in serious injury or death.

Kattsafe accepts no direct or indirect responsibility and/or consequential liability whatever, for any products and systems incorrectly installed or certified. Kattsafe cannot warrant the integrity or suitability of the structure to which the products may be attached. Prior assessment must be made by a qualified structural engineer, unless the structure is authorised or approved by a competent person.

SYSTEM LIMITATIONS

Must be read prior to installation

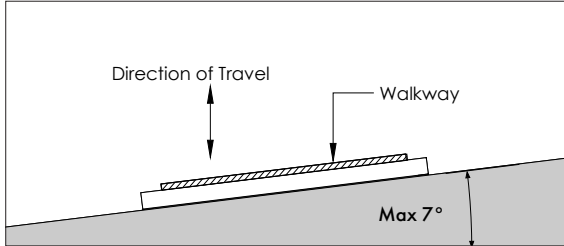
1. Minimum structural requirements for attachment of aluminium walkway. Structure must be rated to withstand required loads according to the relevant building code.
2. The walkway system is rated to 2.5Kpa when installed to the Kattsafe installation guide when installed in accordance to the Kattsafe installation manual .
3. Do not exceed maximum load rating per system. See specific system data plate for user configuration.
4. Do not tamper with or make alterations to system components without manufacturer's consent.
5. This system is not to be used for tethering or lifting machinery or equipment.
6. The walkway system must be inspected by a competent person inspector as recommended:
 - Non corrosive/mild environment – 3 years
 - Corrosive/harsh environment – 12 months (more frequent inspection may be required)



Kattsafe recommends that persons using fall arrest systems do not work alone in case of an emergency and help is required.

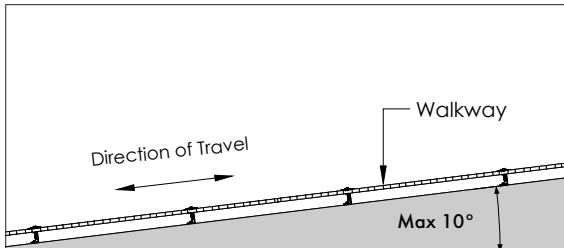
Should any part of the system/equipment have been subjected to abnormal loading, use must be discontinued until replaced/recertified by a competent height safety inspector.

WALKWAY APPLICATIONS



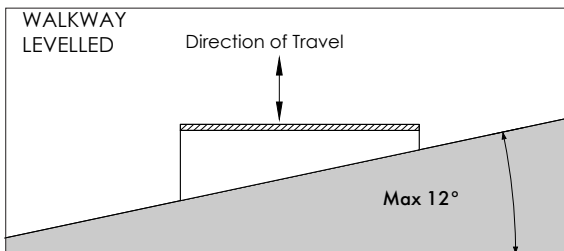
Across slope
Roof angle: 0° - 7°

Walkway same angle as roof.



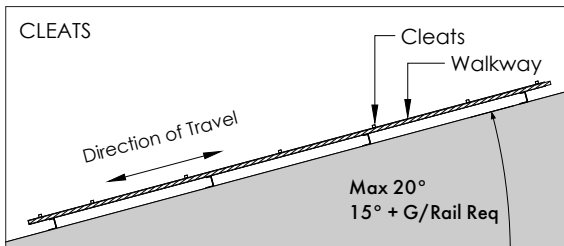
In-line with slope
Roof angle: 7° - 10°

Walkway same angle as roof.



Across slope
Roof angle: 8° - 12°

Walkway to be levelled.



In-line with slope
Roof angle: 10° - 20°

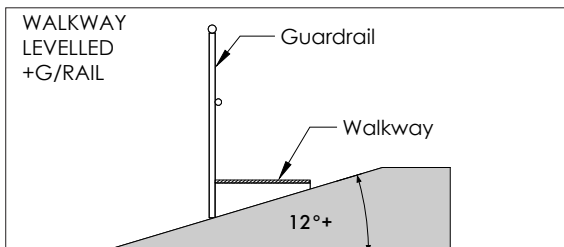
- Walkway same angle as roof
- Cleats required

Cleat Spacings:

Slopes 10° - 15°: 450mm

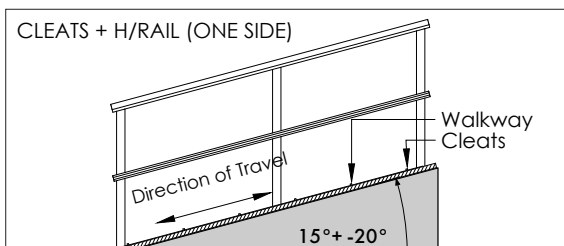
Slopes >15° - 18°: 400mm

Slopes >18° - 20°: 350mm



Across slope
Roof angle: 12° +

- Walkway to be levelled.
- Guardrail required.

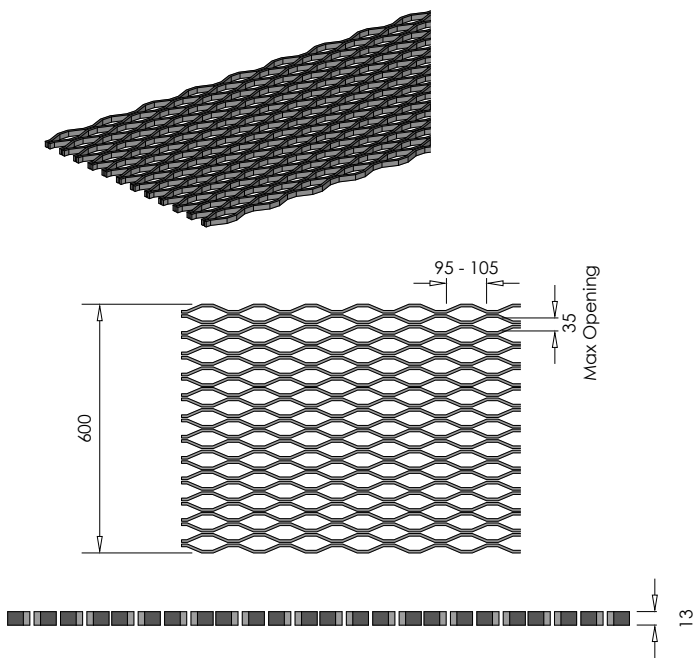


In-line with slope
Roof angle: 15° - 20°

- Walkway same angle as roof
- Cleats required
- Guardrails required on both sides

ALUMINIUM WALKWAY SPECIFICATIONS

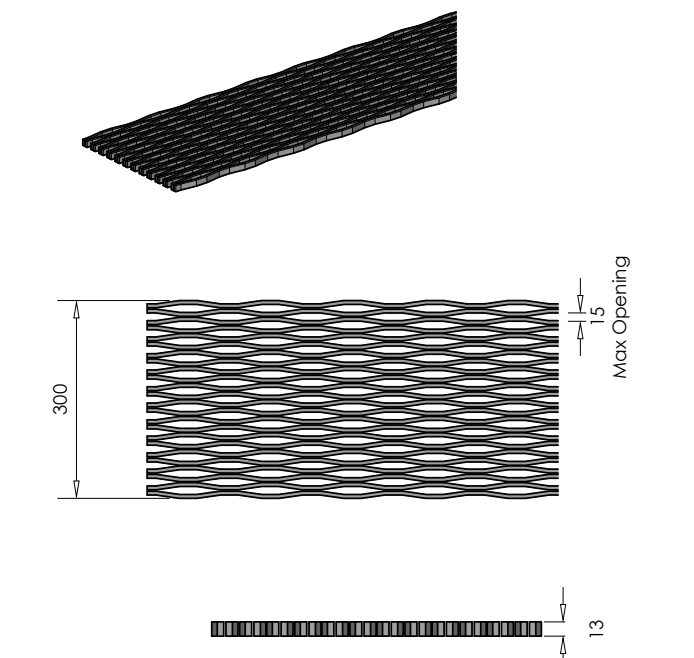
GW335 Aluminium walkway



Approx. 55% open area

Max load UDL (kPa)	Span (mm)	Max deflection (mm)
2.5	700	7
4.0	450	5
5.0	400	4

GW334 Aluminium mini mesh walkway

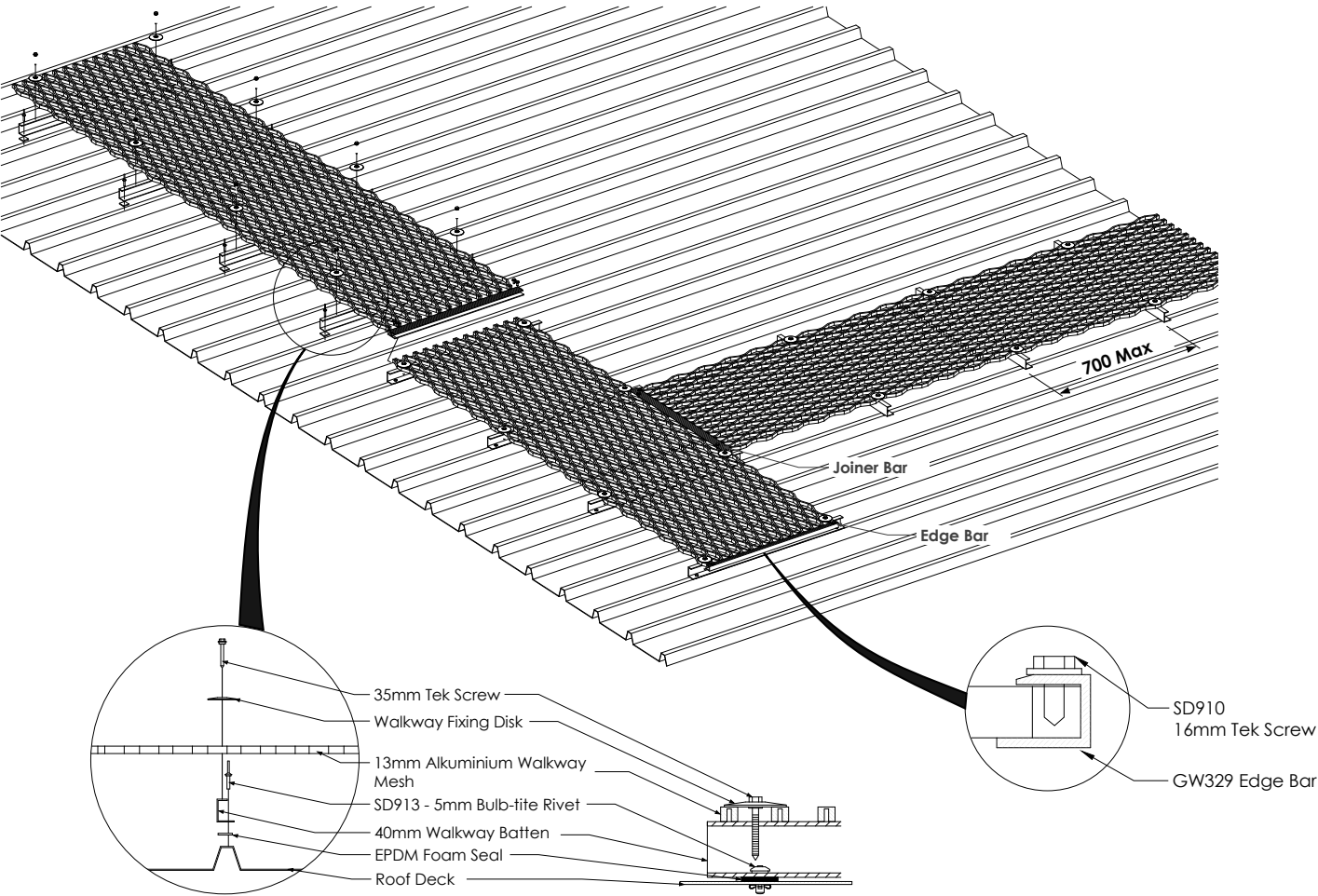


Approx. 40% open area

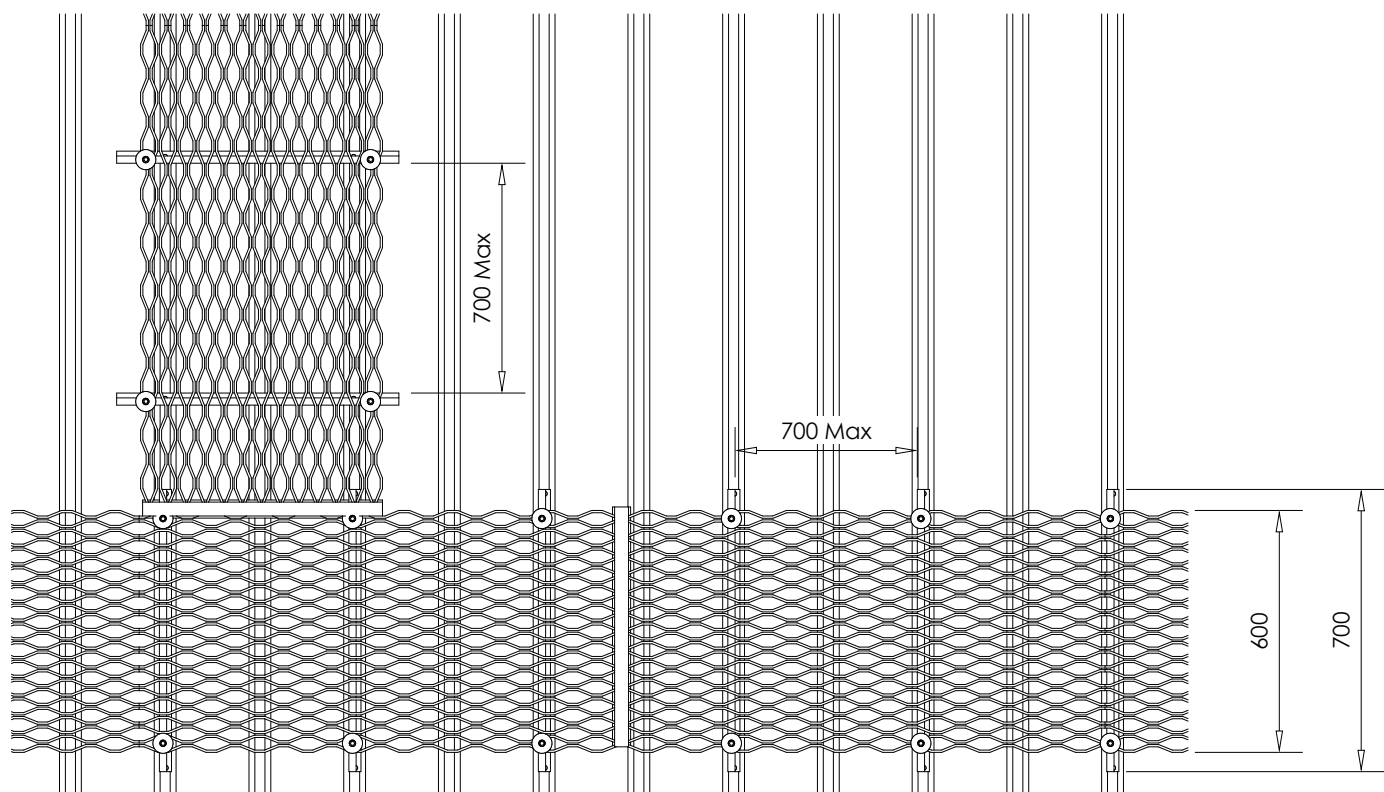
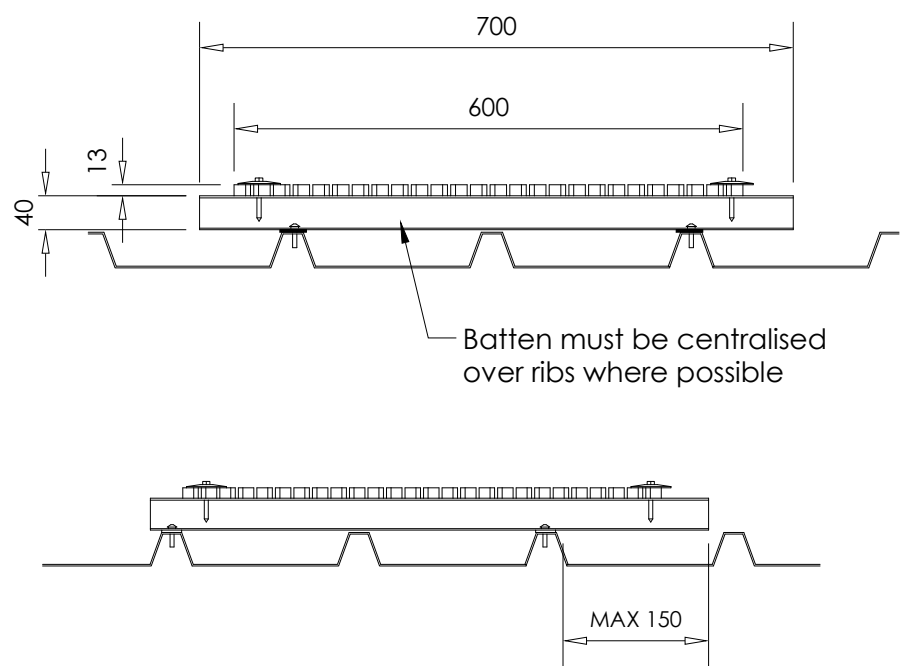
Max load UDL (kPa)	Span (mm)	Max deflection (mm)
2.5	700	5
4.0	550	5
5.0	450	5

ALUMINIUM WALKWAY INSTALLATION PROCEDURE

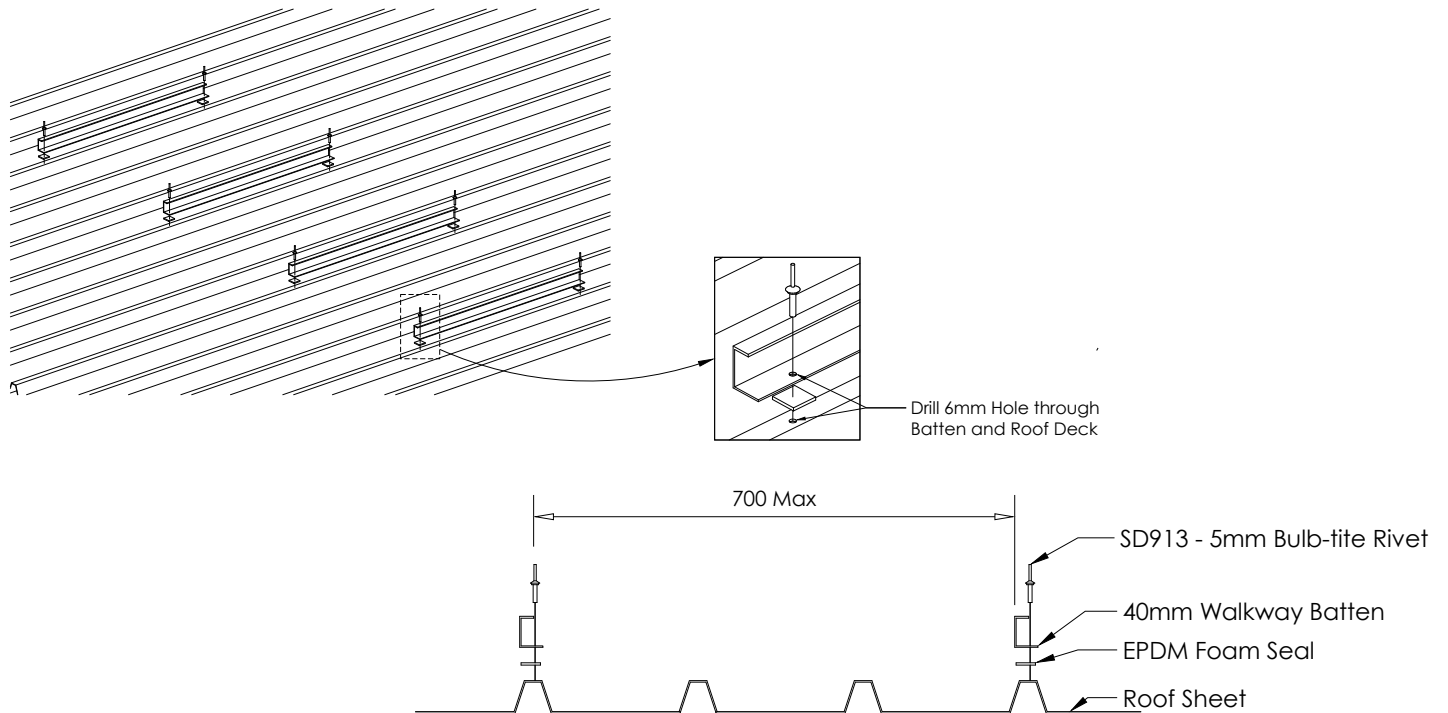
GW8 Walkway



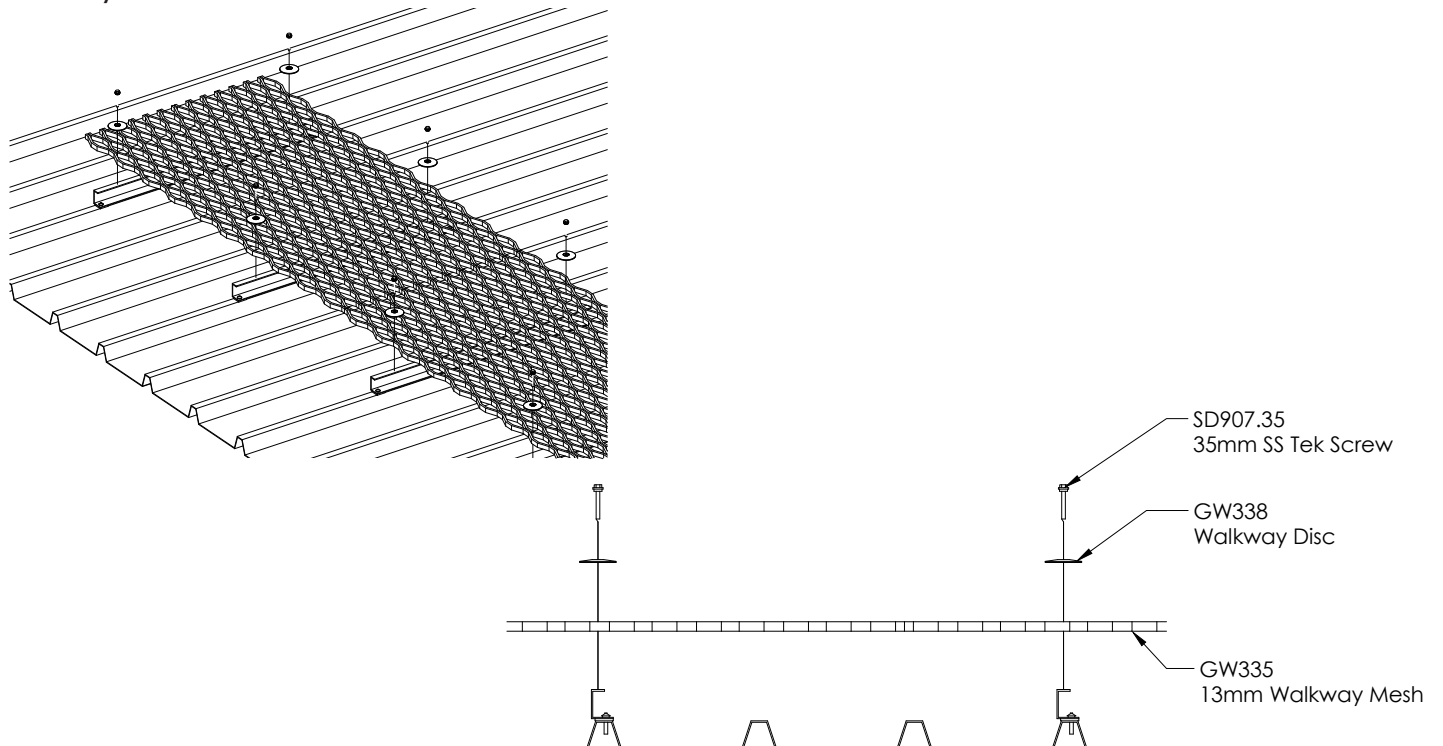
GW8 Walkway spacing



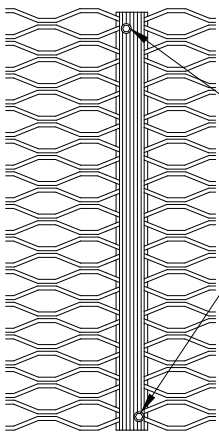
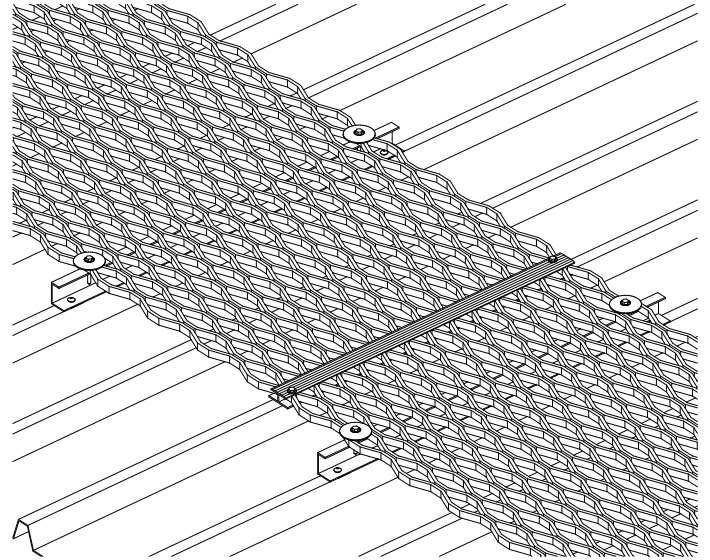
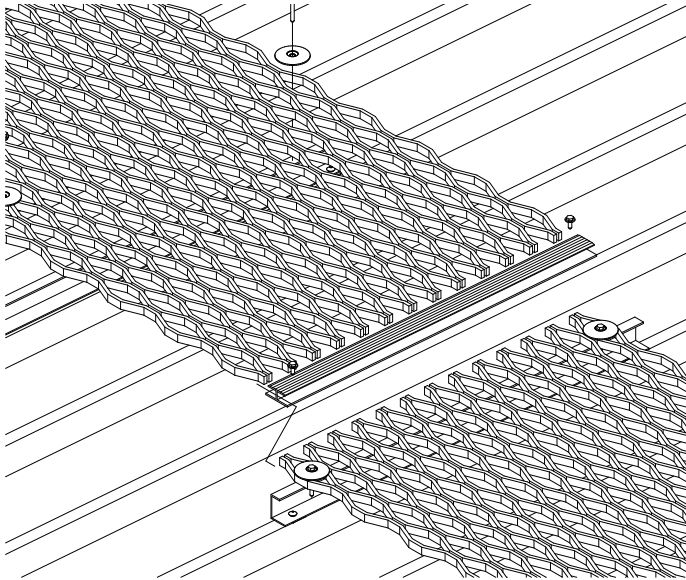
Batten installation



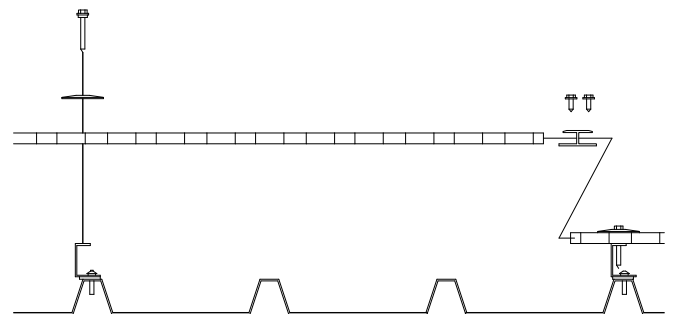
Walkway mesh installation



Joiner bar installation



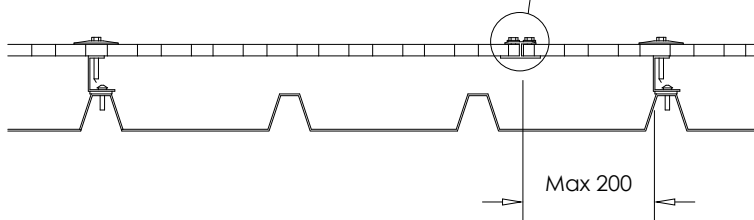
Place screws on opposite sides



16mm Tek Screw

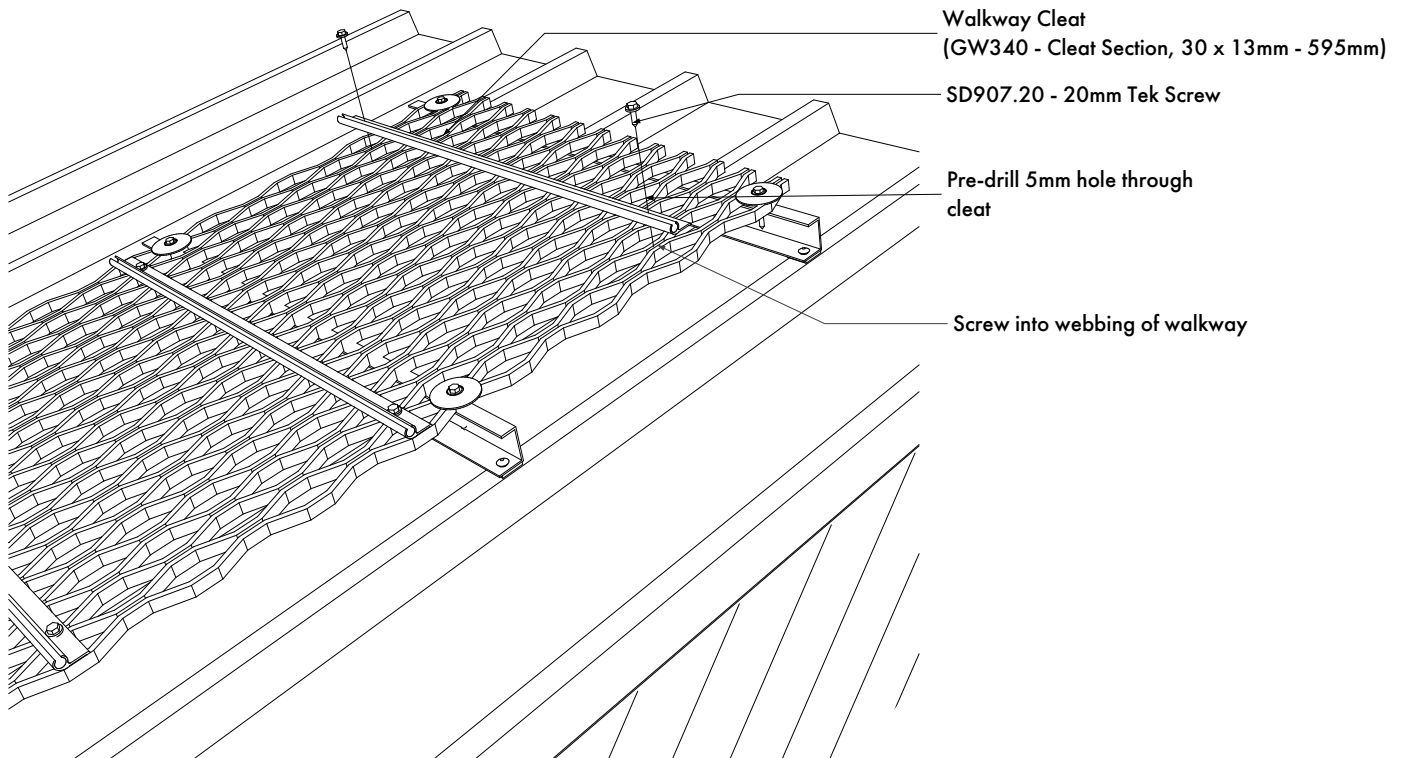
GW325
Walkway Joiner Bar

3mm Gap



Walkway Joiner Bar is to be no more than 200mm from a support

Walkway cleat installation



Walkway on Sloping Roofs

(Along Slope)

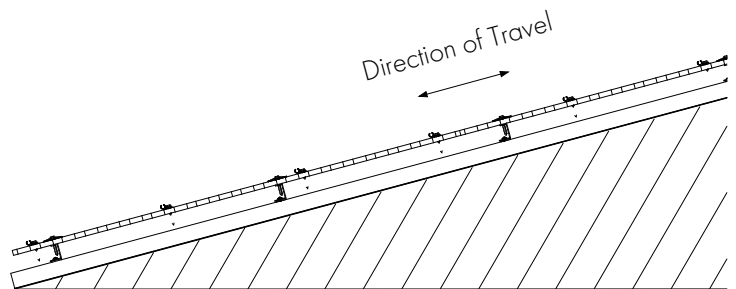
Walkway can be used in the range from 0° - 20° .
Any walkway slope from 10° - 20° will need cleats installed.

Cleat Spacings:

Slopes 10° - 15° - 450mm

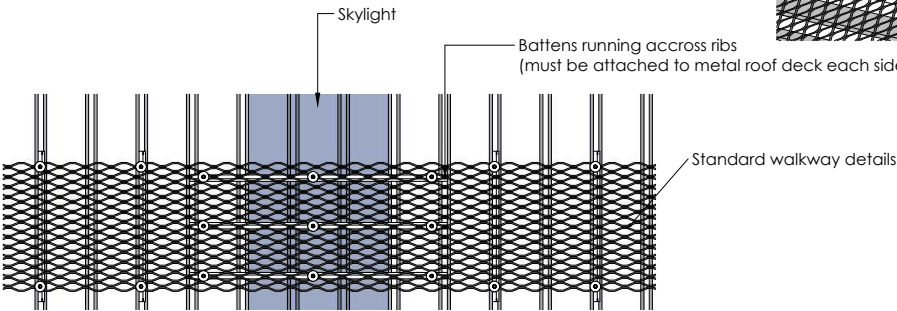
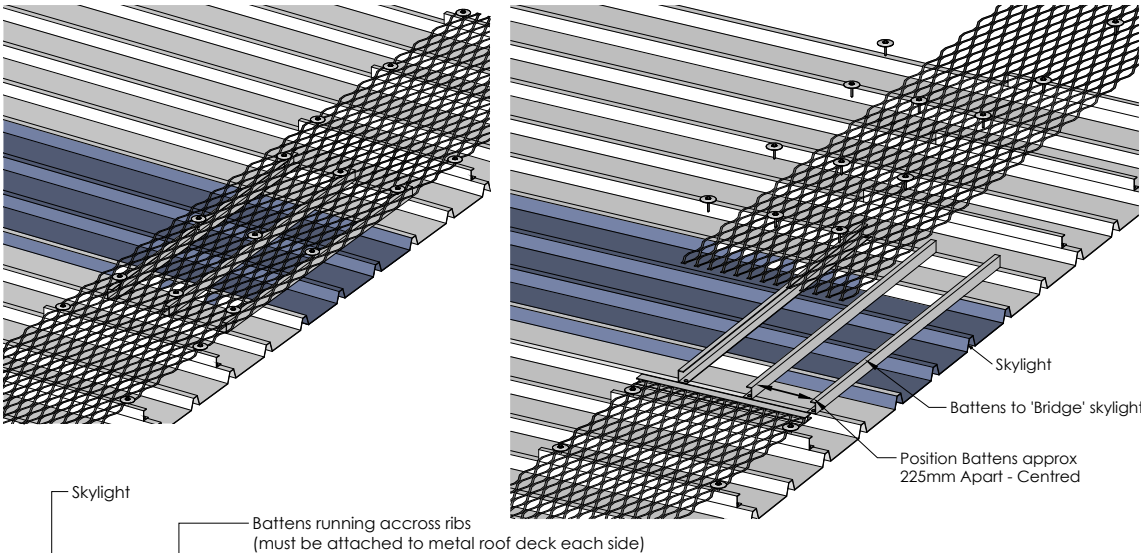
Slopes 15° - 18° - 400mm

Slopes 18° - 20° - 350mm

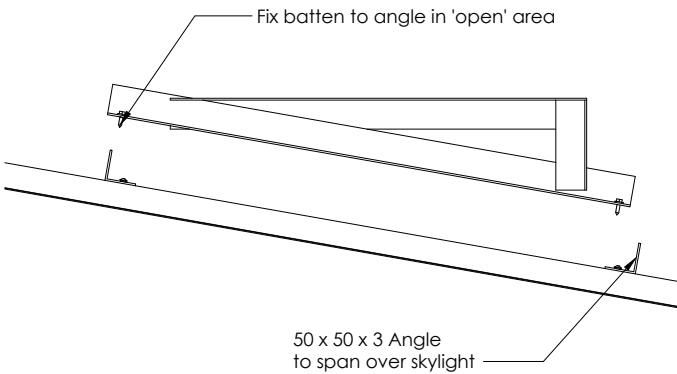
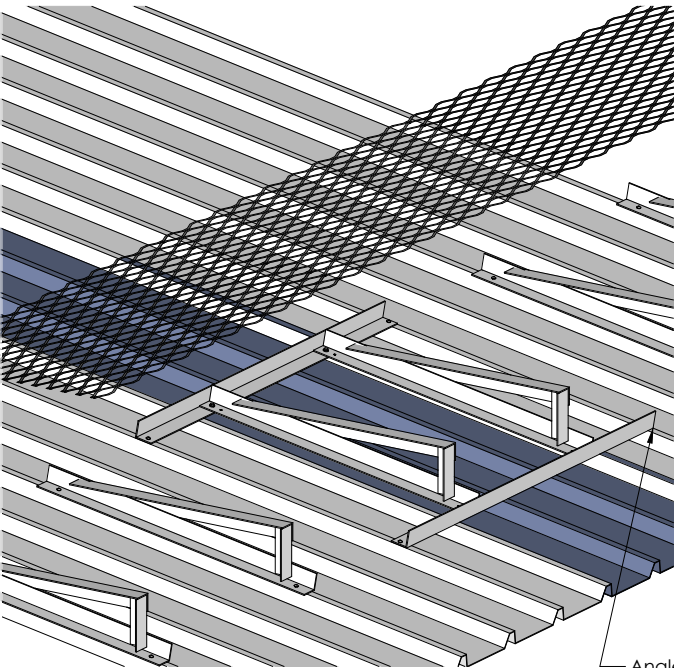


WALKWAY OVER SKYLIGHTS INSTALLATION PROCEDURE

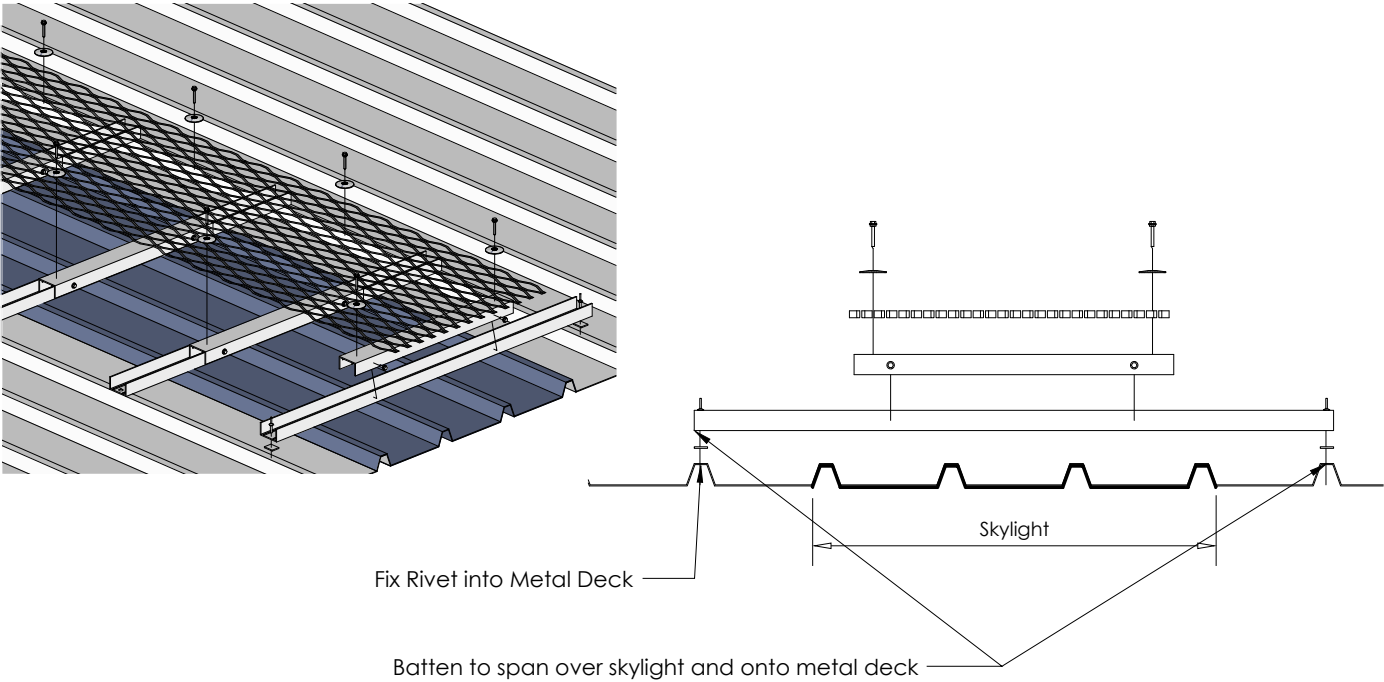
Aluminium walkway
overview



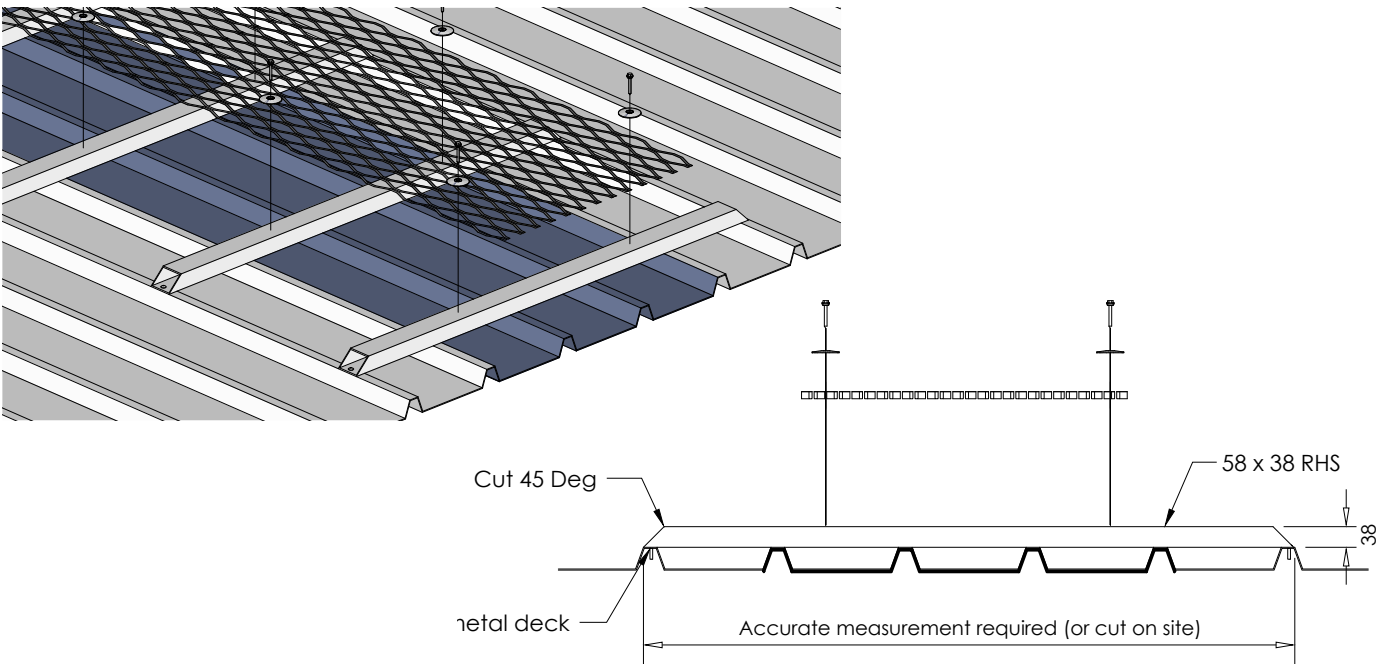
Aluminium levelled walkway over skylights using a c-channel



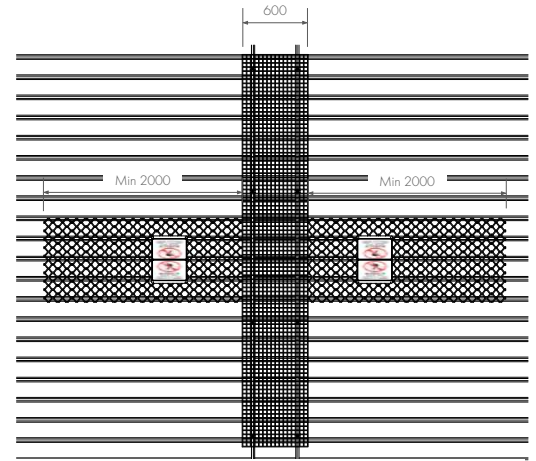
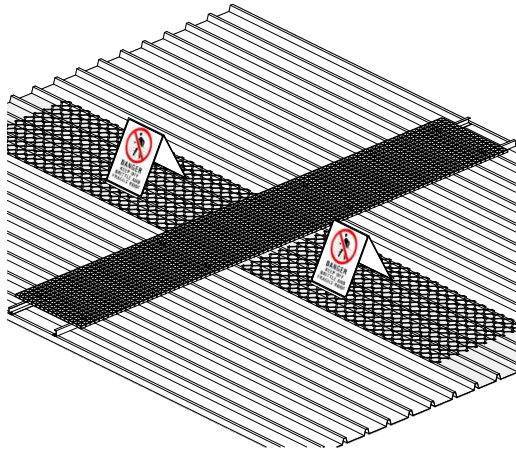
Aluminium walkway over skylights (length ways) using a c-channel



Aluminium walkway over skylights using RHS

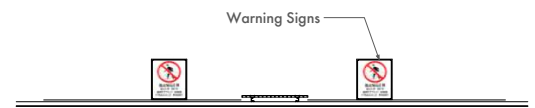


Fibre walkway with skylight protection mesh

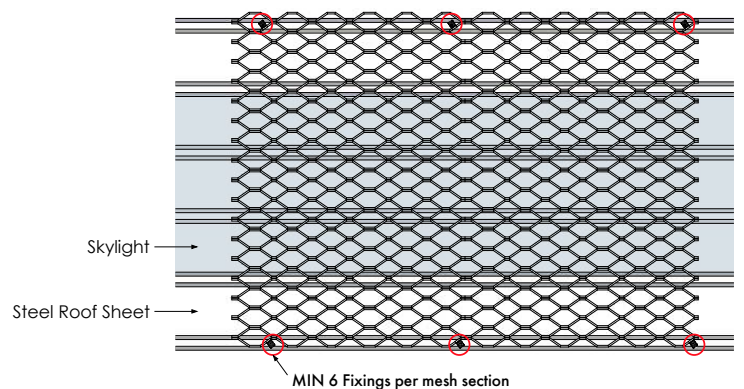
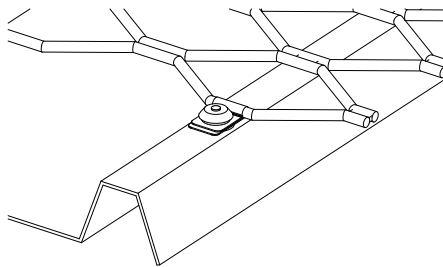
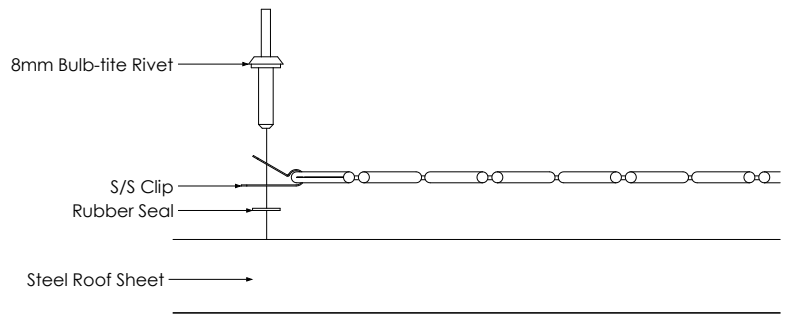
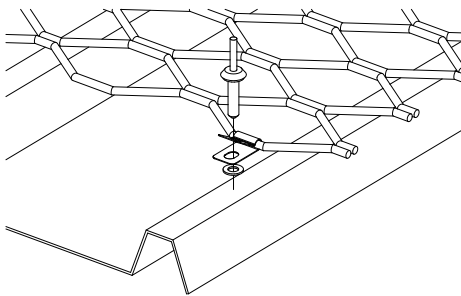


Notes

- FRP walkway must be supported using c-batten over skylight area.
- Skylight mesh must extend 2000mm minimum either side of walkway.
- Danger/brittle roof signs must be placed either side of walkway on skylight mesh.
- Skylight protector mesh must be provided if skylight is within 3000mm of walkway or general working area.
- Installation to be according to manufacturers requirements.



Skylight protection mesh installation

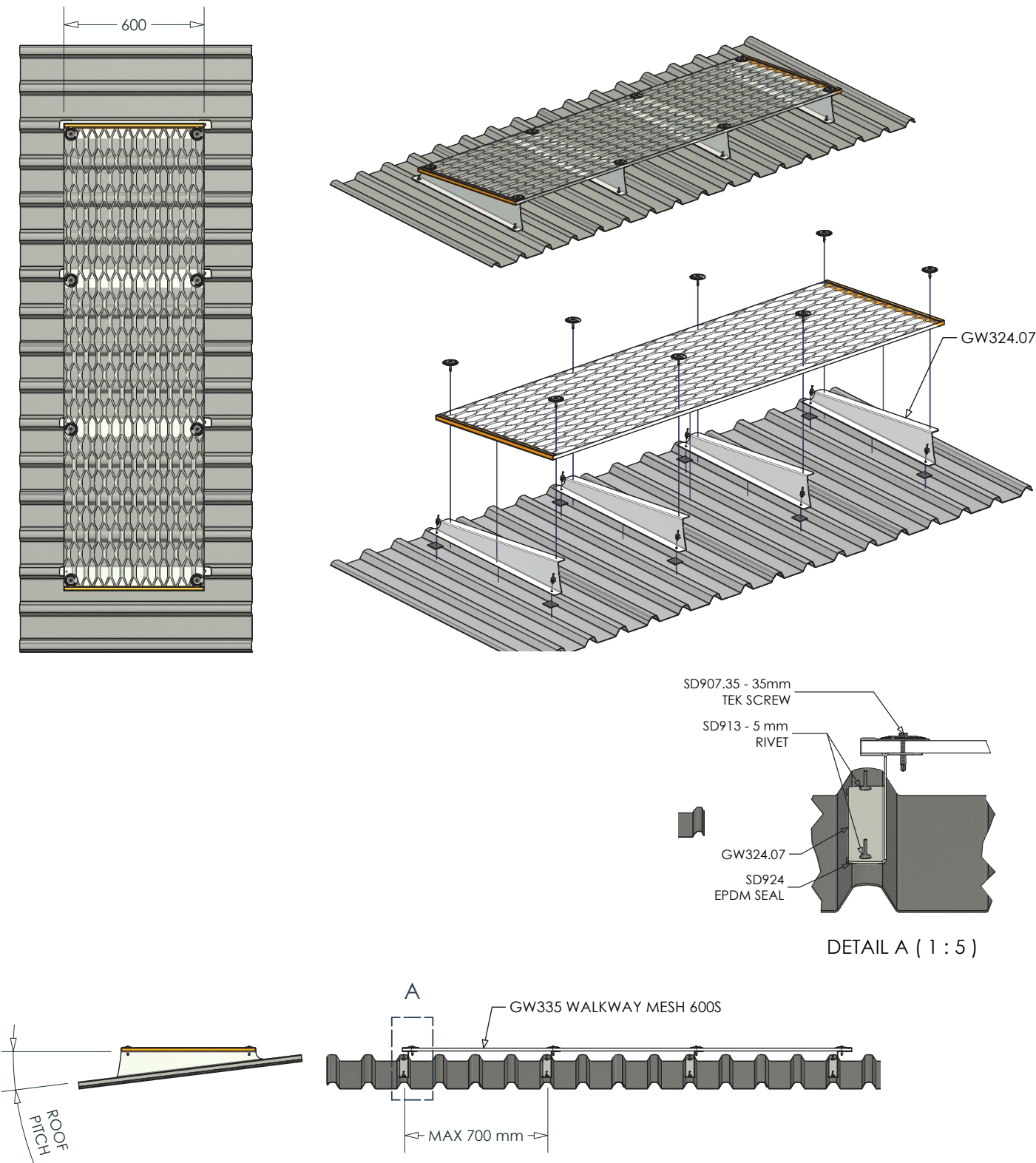


Notes

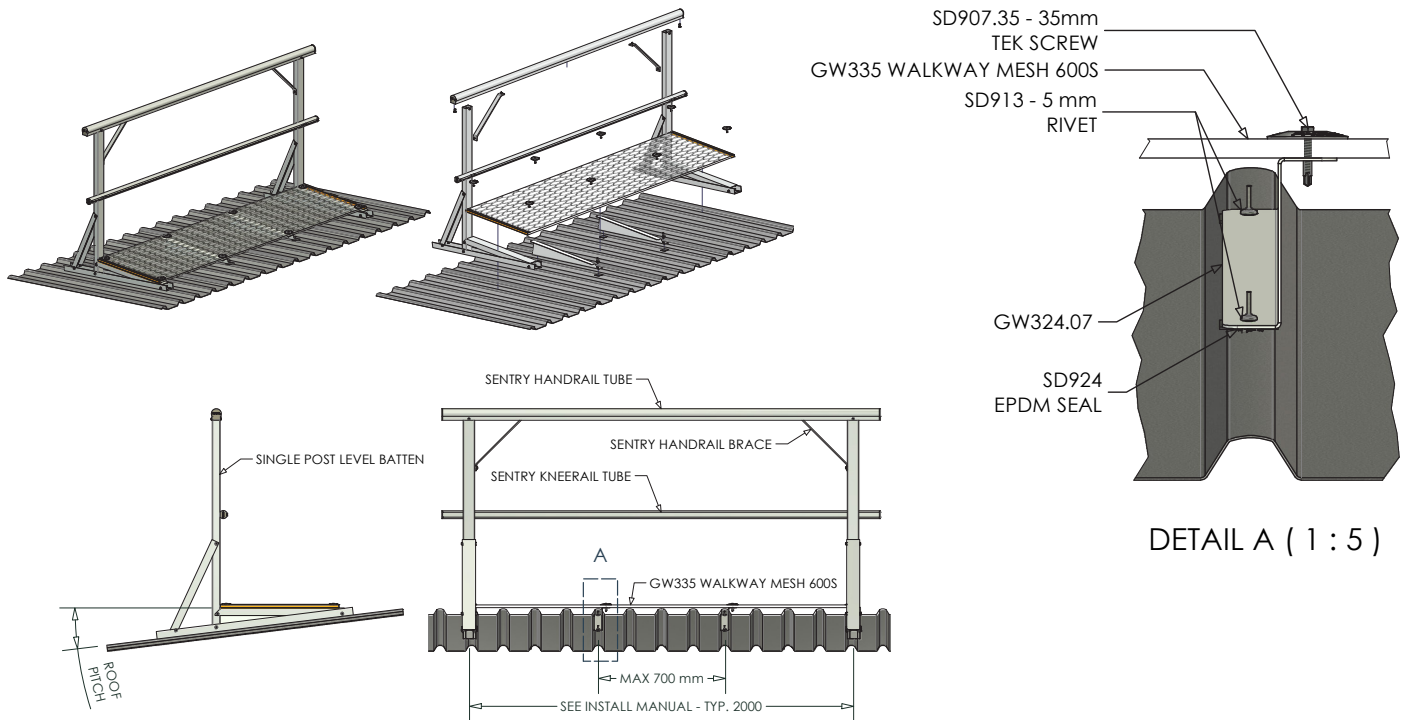
- This mesh is not designed as a trafficable surface.

LEVELLED BATTEN INSTALLATION PROCEDURE

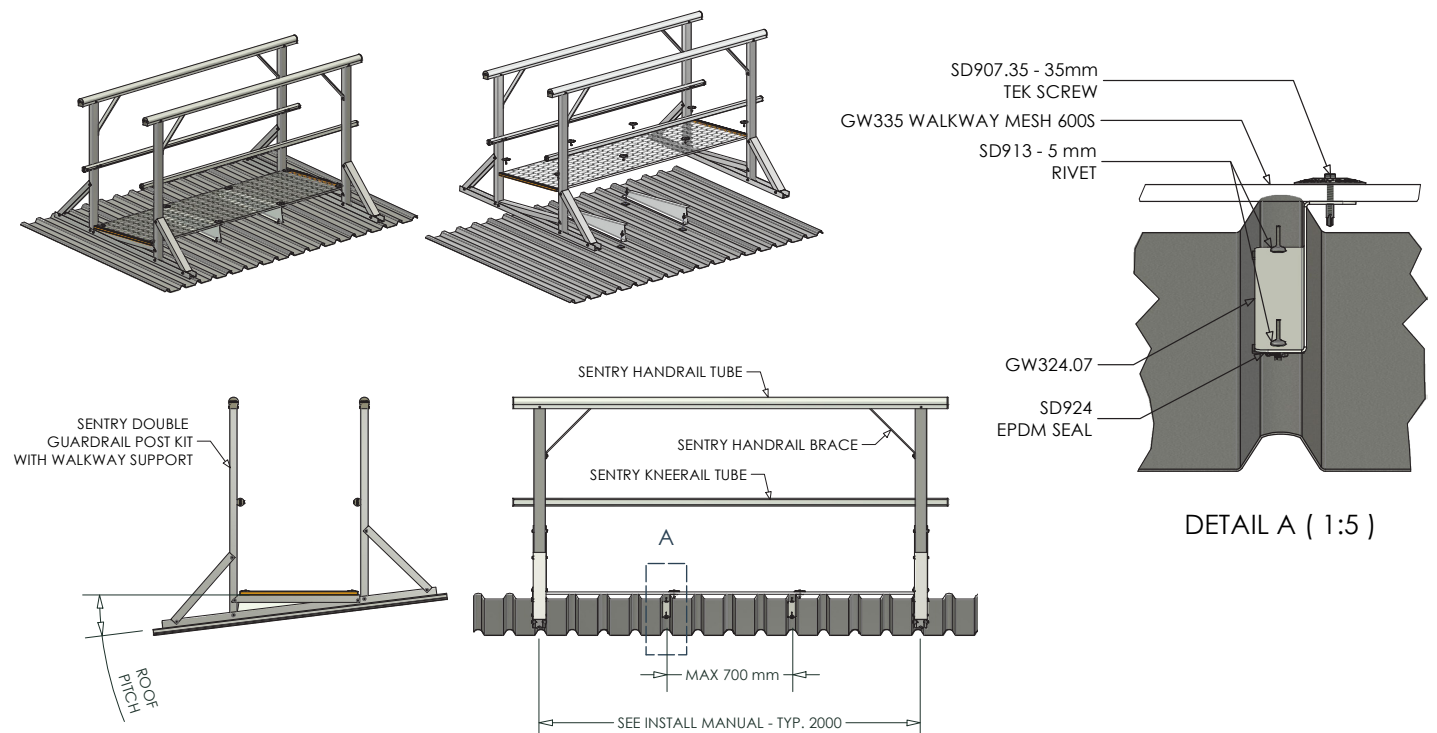
Overview



GW5 Walkway with guardrail one side - levelled metal deck mount

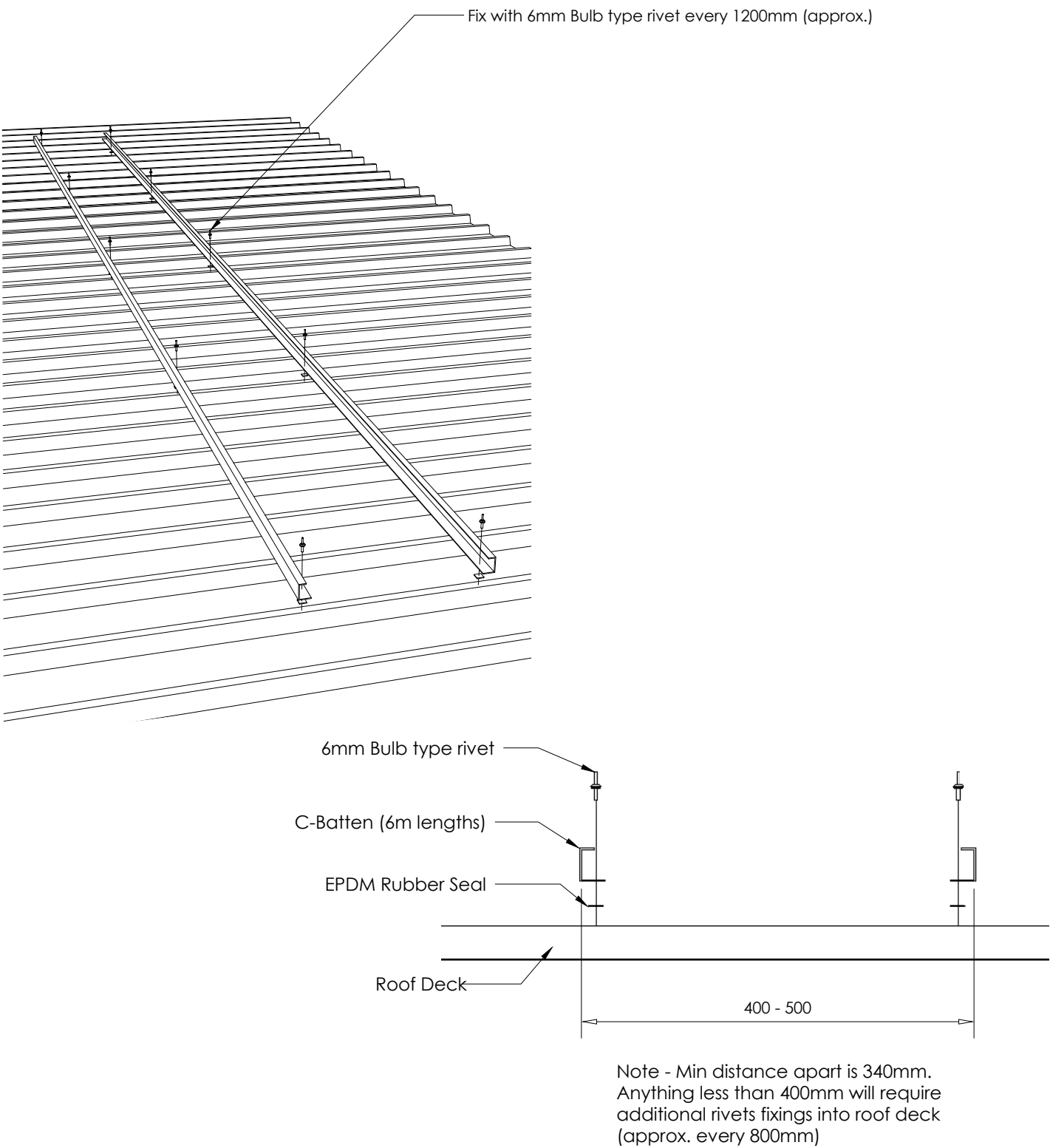


GW7 Walkway with guardrail both sides - levelled metal deck mount

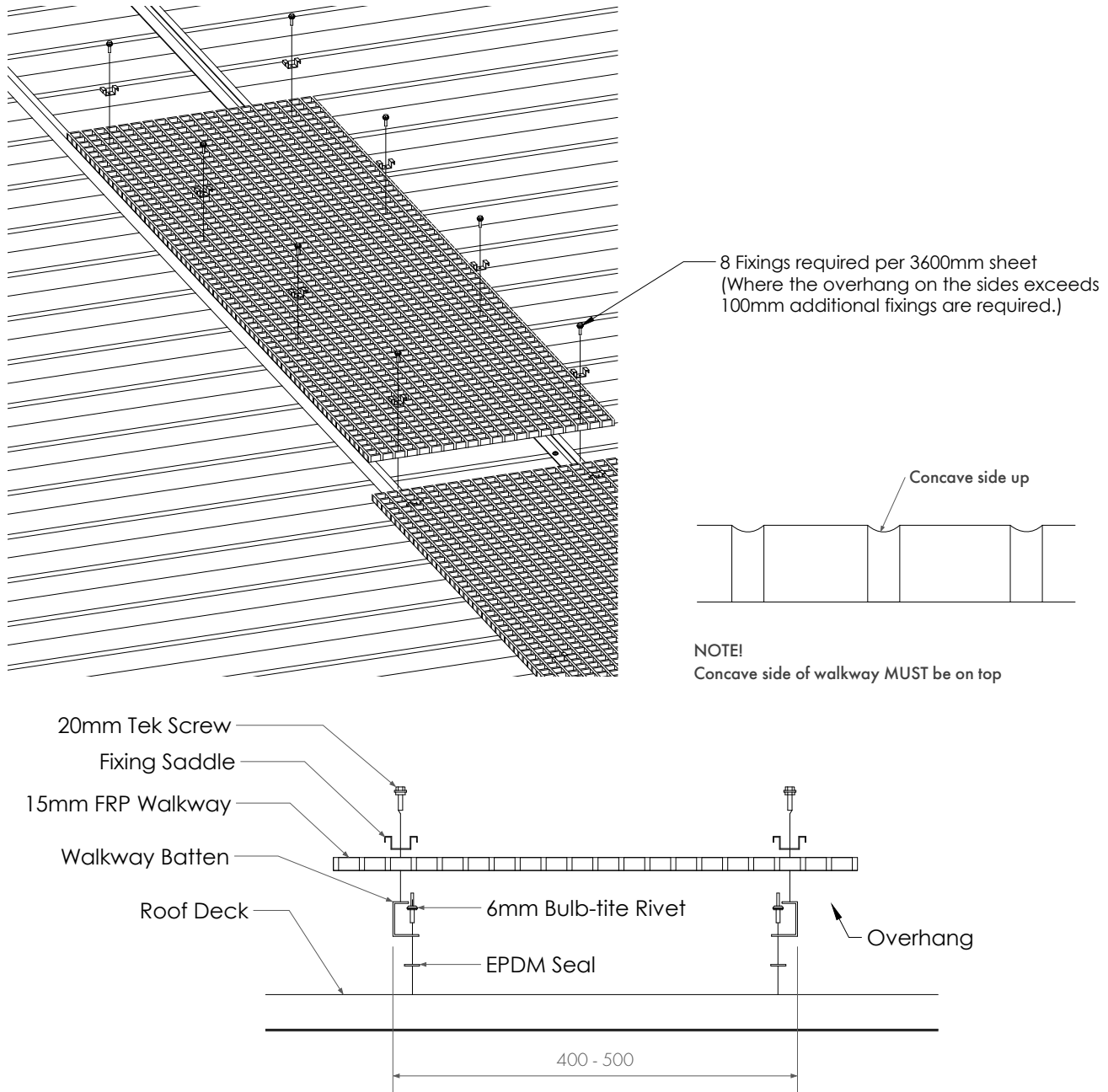


FIBRE WALKWAY INSTALLATION PROCEDURE

Fibre walkway on battens installation



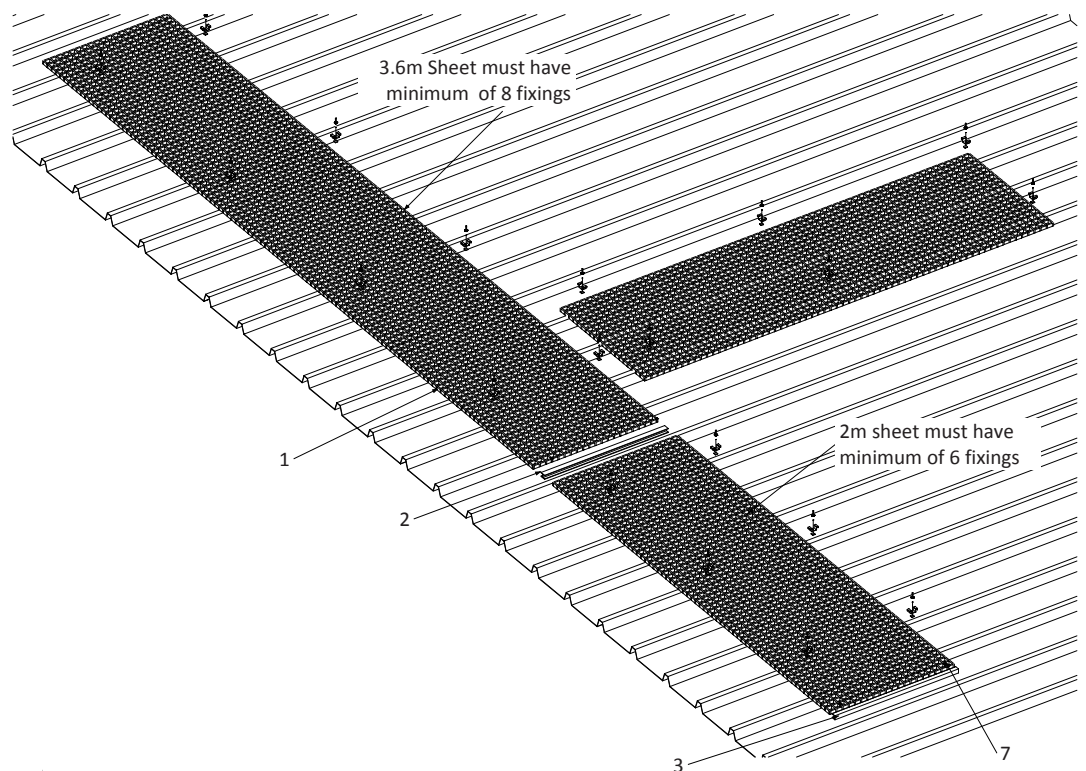
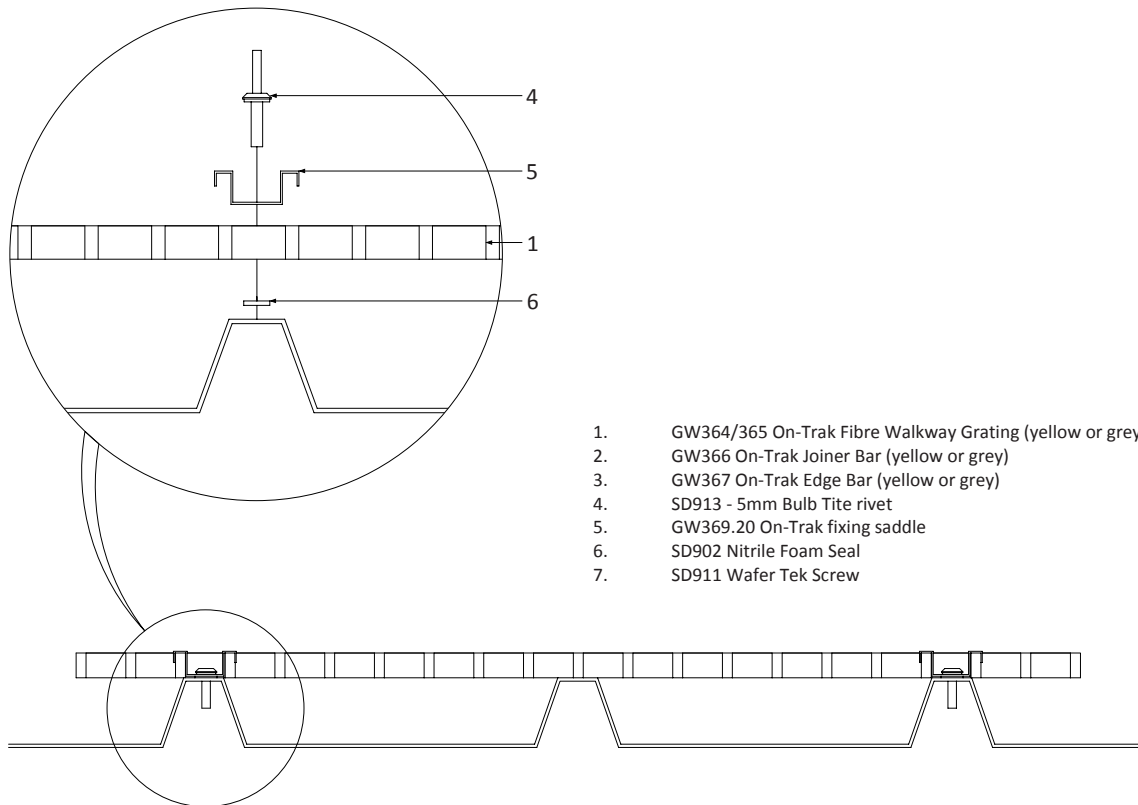
Fibre walkway on battens installation



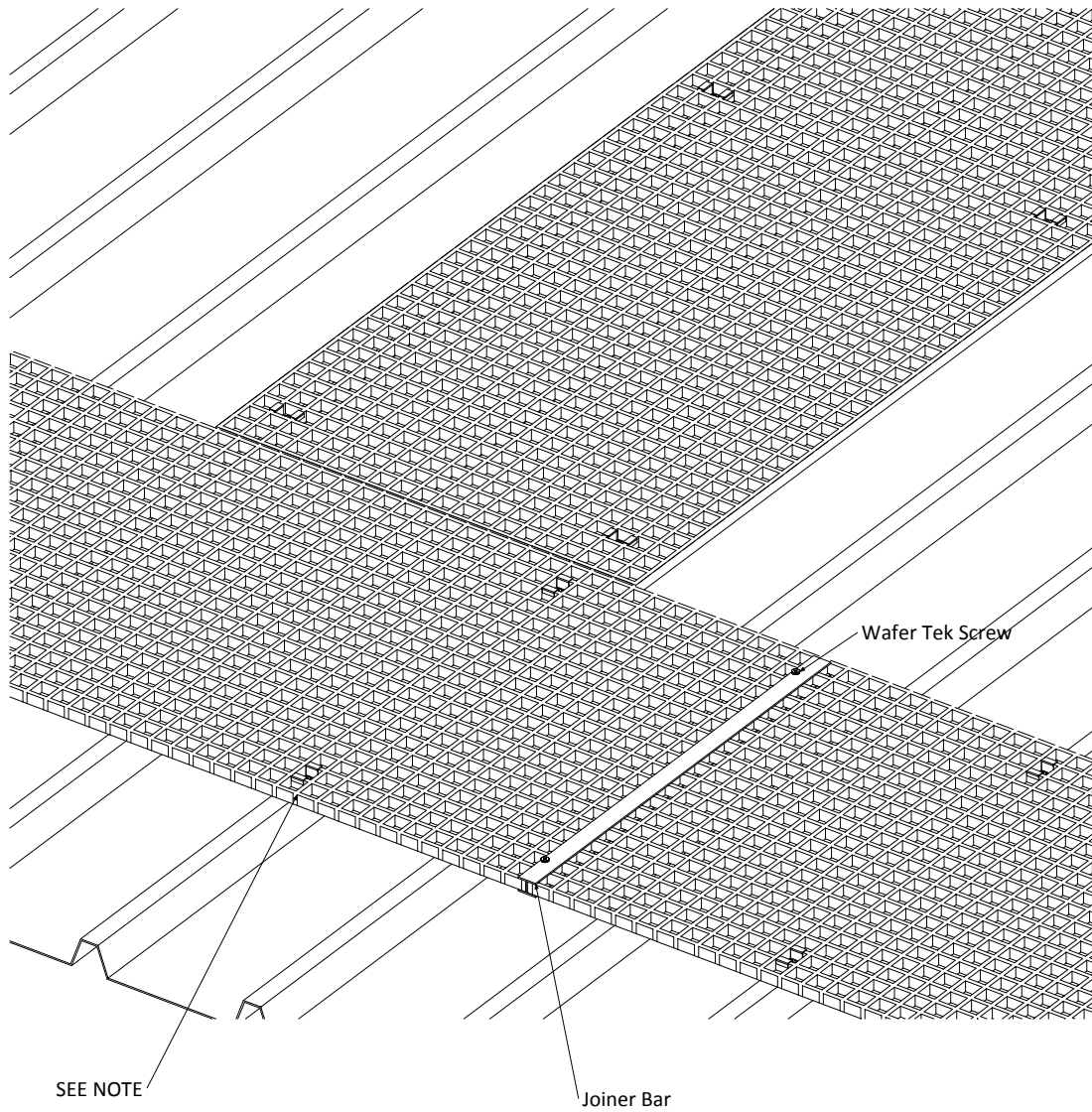
Notes

- Walkway on battens provides improved spread load on roof deck.
- Requires less fixings into roof deck.
- To be installed according to AS 1657:2013.
- Installation to be according to manufacturers requirements.

Fibre walkway on battens installation



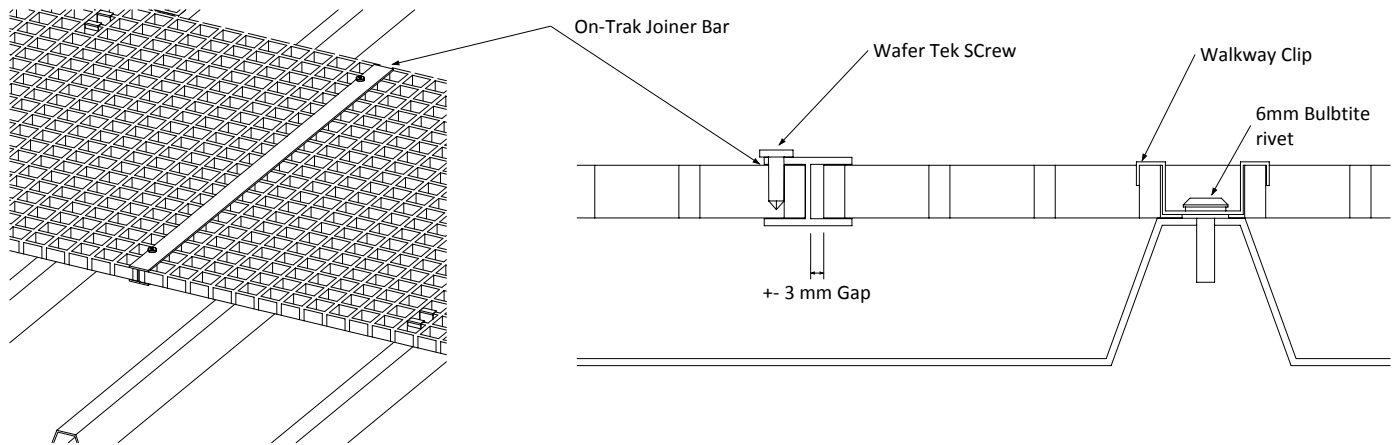
Fibre walkway installation



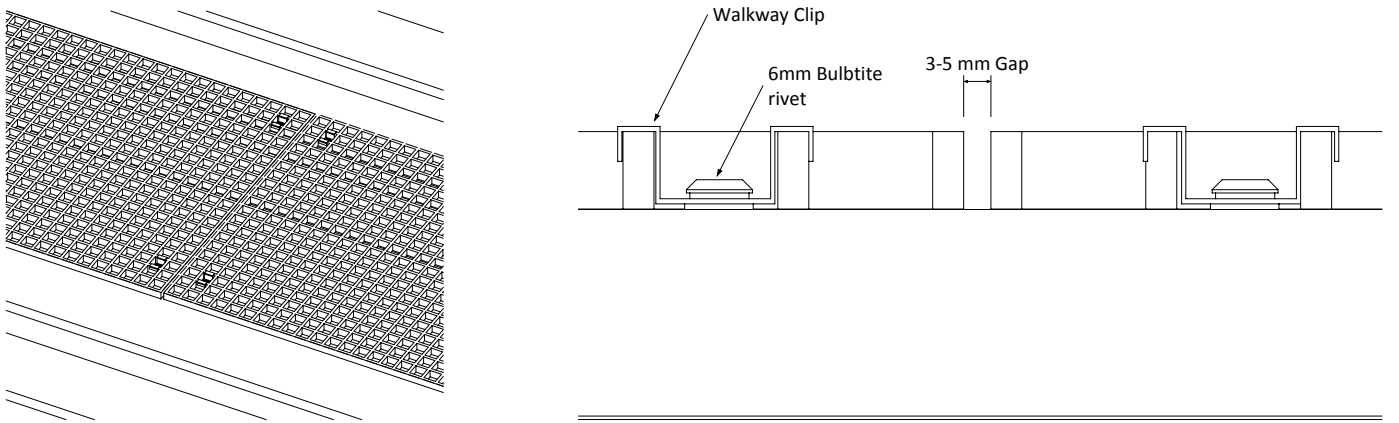
Notes

- When fixing across roof ribs, put fixings one rib away from joiner (If possible) as this has a better strength due to cantilever.
- Screw wafer tek screw on one side only to allow for expansion and contraction.

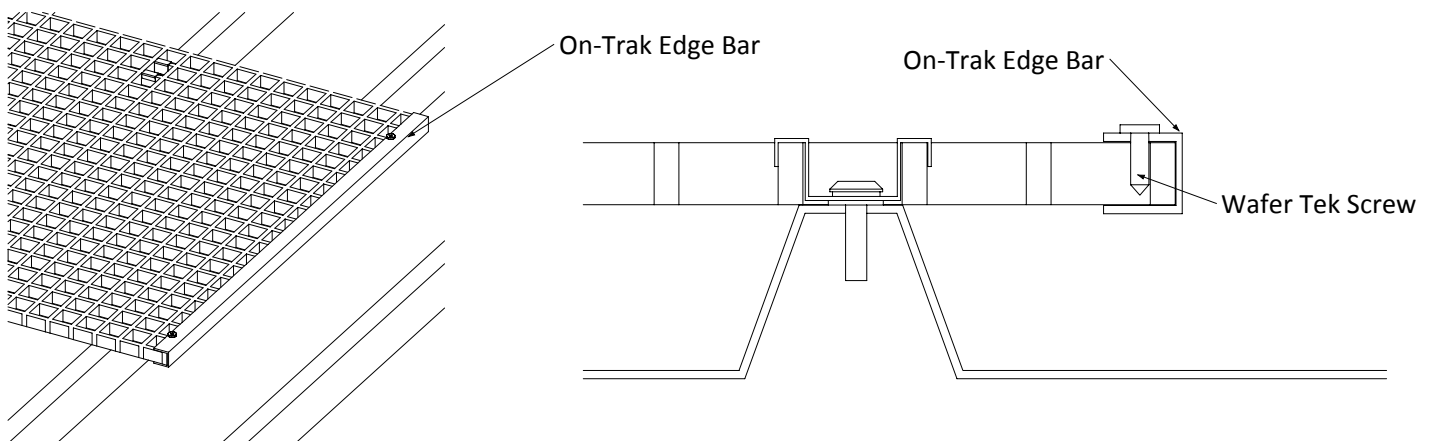
Walkway across roof ribs - joiner required



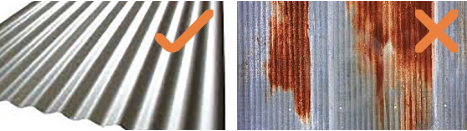
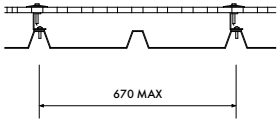
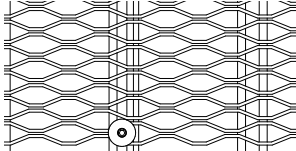
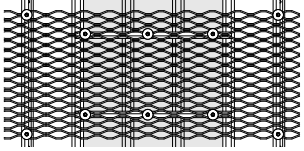
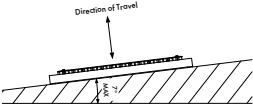
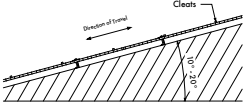
Walkway in-line with roof ribs - no joiner required



Edge bar installation



INSTALLATION CRITERIA

Component	Installation criteria
<p>Roof deck</p> 	<p>Roof deck must be in good condition, no rust or severe corrosion.</p> <p>Filings and installation off cuts cleared away.</p>
<p>Walkway battens</p> 	<p>Ensure the max batten spacing is 670mm.</p> <p>Check if there is 2 x 5mm bulb tite rivets into roof deck per batten.</p> <p>Ensure there is a EPDM seal between the batten fixings and roof deck.</p>
<p>Walkway panels</p> 	<p>Fixed to battens using 2 x 35mm tek screw per batten.</p> <p>To be joined to consecutive panels using H section joiner bar.</p>
<p>Skylights</p> 	<p>Battens must be positioned at 90° to roof deck.</p> <p>Battens must be fixed to metal roof deck either side of roof light.</p>
<p>Walkway across slopes</p> 	<p>Ensure the maximum angle across slope of walkway is 7°</p>
<p>Walkway along slopes</p> 	<p>Ensure the walkway has cleats if the slope is 10° - 20 °</p>

SYSTEM MAINTENANCE

Must be read prior to checklist

1. Kattsafe walkway needs to be inspected by a competent height safety inspector every 3 years for non corrosive environments or 12 months for corrosive or harsh environments. (To be determined by specialist depending on severity of surrounding conditions.)
2. Never clean using acids or other chemicals that could damage the system components.
3. The identification label must be completed confirming certification, maintenance and inspection of the system.
4. Any deterioration or damage to the system or equipment must be reported to person in control of the workplace.
5. Maintenance inspections must be clearly documented. Any non-conformance must be clearly identified and tagged.
6. 'Do Not Use' until corrective action by a competent person has been completed.

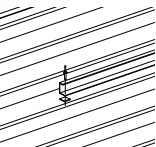
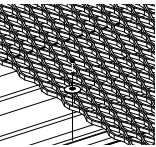
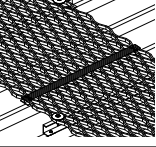

MAINTENANCE CHECKLIST

The checklist below outlines key checking criteria required to ensure the safe use of this system. Any item of concern not shown on the checklist must be noted on the maintenance report and brought to the attention of the workplace manager.

Items ticked PASS - YES means they conform with the required checking criteria and are suitable for normal use until the next recertification date. System data plates must be updated showing current check date and next check date.

Item ticked PASS - NO means they do not conform to the required checking criteria. These items must be clearly tagged 'Do Not Use' and the required corrective actions put in place. The maintenance report must clearly document all non-conforming criteria.

 **This system must be maintained by a competent height safety inspector trained in the safe use and maintenance of this system.**

Component	Inspection criteria	Pass Y/N	Corrective action	Completion date
Fixings   	Fixings into roof structure secure - min 2 x 5mm bulb-tite rivets into roof deck.			
	EPDM seal between batten and roof deck to seal hole.			
	Min 2 x 30mm tek screws through fixing disc and into walkway batten.			
	Ensure minimum of two fixings through joiner bar into walkway panel.			
Walkway	No more than +- 200mm overhang.			
Roof deck 	Roof deck quality in good condition i.e. No visible rust or roof deterioration.			

TECHNICAL SPECIFICATION

Walkway

Kattsafe walkway installed on battens using bulb type self sealing rivets and EPDM dissimilar metal seal. System design, supply, layout, installation and certification by a Kattsafe approved installer, as per the manufacturer's installation instructions and current standards.

Materials

- Walkway : mill finish, expanded aluminium grating
- Roof battens: mill finish profiled aluminium truss system

Dimensions

- Walkway grating length: 3000mm/6000mm
- Walkway grating width: 600mm
- Walkway grating thickness: 13mm

Weight

- 4.5 kg per linear metre (6.4kg per m²)
- 25kg per 6m length

Fixings (refer to installation manual)

- Walkway to batten: 12-14 x 35 stainless self drill screw
- Batten to roof deck: 5mm construction grade bulb type rivet
- EPDM seal / dissimilar metal barrier

Rating

Batten spacing (mm)	Max load capacity (kPa)	Max point load on walkway (kg)
670	5	110
700	2.5	110

Compliance

Kattsafe walkway is designed to comply with Australian Standard AS 1657:2018 and relevant statutory OHS Codes of Practice/Guidelines.

Testing

- Testing and performance based on requirements of Australian Standard AS 1657:2018.
- Slip resistance tested to AS4586 (Classification - R11).

Product warranty

10 Years from date of purchase subject to correct installation. Use and maintenance to be in accordance with manufacturer's specifications and recommendations. (This excludes wearing parts).

Inspection and maintenance

Visual inspection for any damage or loose fixings must be done periodically and prior to use. Basic wear and tear preventative maintenance is recommended, as per manufacturer's specifications and recommendations.

Important note

- Failure to supply and/or install proprietary product in accordance with above standards and codes, specifications and instructions voids complete system certification and/or warranty
- Maximum batten increments: 700mm

WARRANTY INFORMATION

Warranty period on this system:
10 years from date of purchase

Should you have a warranty claim as a result of a defect the following procedure must be followed:

Identify the following information:

- The product/system name and code number.
- The date of purchase/installation.
- Installation company details.
- The installation identification number.
- The name of the company using this system.
- A description of the defect/warranty claim.
- The periodic system maintenance report.

Forward the above information to sales@kattsafe.com.au or contact technical helpline, 1300 301 755.

Terms and conditions

All warranty claims must be made in writing within 14 days of the appearance of the defect.

Incorrect installation or work done by a non accredited Kattsafe system installer will void all warranty rights.

Systems that have been installed using non proprietary equipment will void all warranties.

System roof/cladding and concrete penetration seals are not covered in this warranty.

Systems/components that have not been maintained in accordance with manufacturer's/legislative requirements will void warranty.

Systems used by incompetent persons or use with non compatible accessories ie. harness gear, lanyards, travellers, fall arrestors etc. will void warranty.

Systems/components used for purposes other than their intended use will void warranty.

General wear and tear is expected and will depend on the frequency of use and is not covered by warranty.



Product brochure
Guardrail and walkway



Installation manual
Guardrail



Installation manual
Walkway



QMS Certification
ISO 9001:2015

Find all related products and resources on our website.
kattsafe.com.au

Kattsafe

Height access
and fall protection

1029 Mountain Highway
Boronia Victoria 3155
Australia

1300 301 755
sales@kattsafe.com.au
kattsafe.com.au