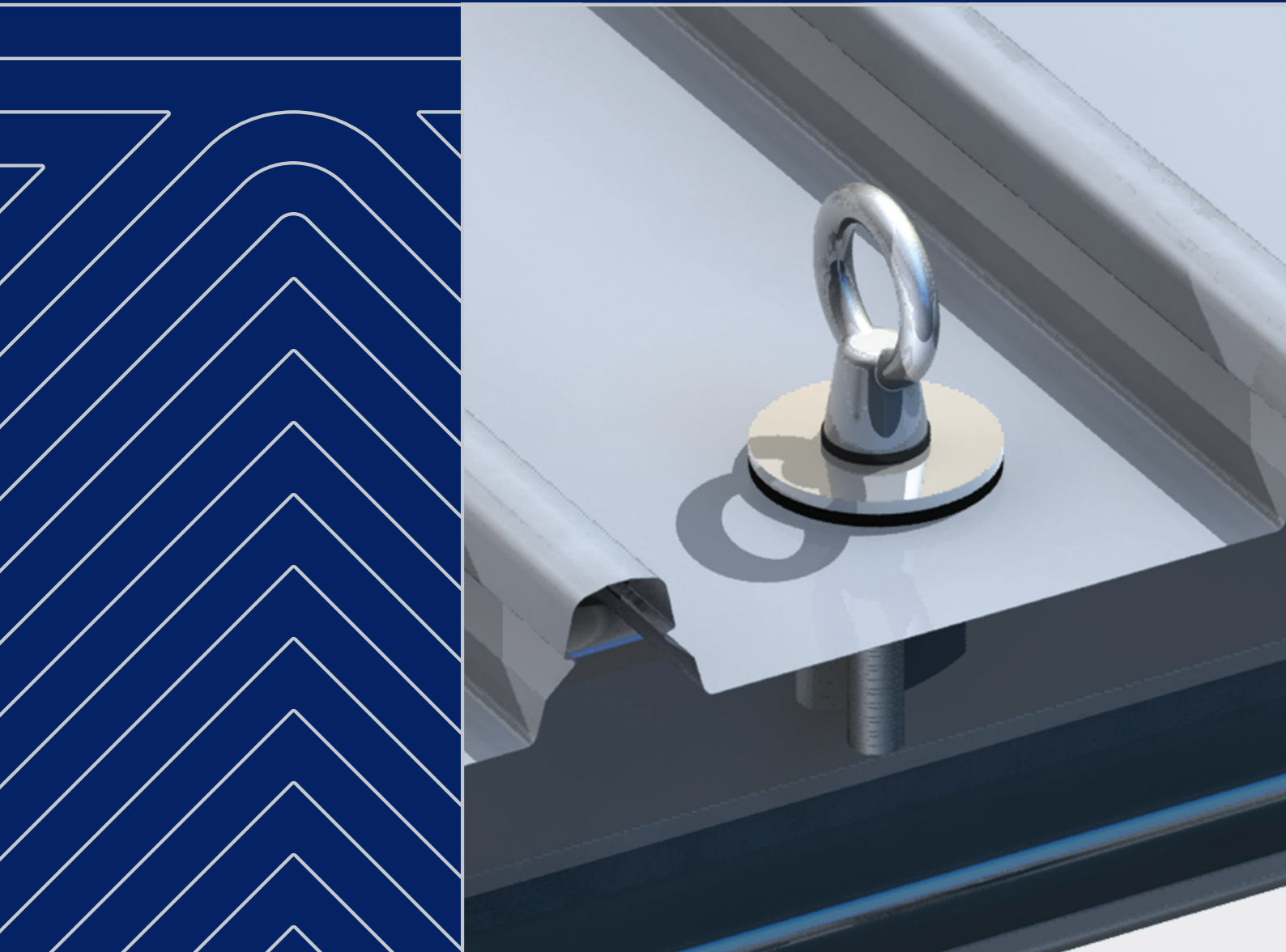


# PURLIN MOUNT ANCHOR

AP123



---

The purlin mount anchor is a compact anchor that is installed on metal roof decks for rope access and fall arrest use.



---

**Product brochure**  
Purlin mount anchors



---

**Installation manual**  
Purlin mount anchors



---

**Operation manual**  
Fall arrest anchors



---

**Operation manual**  
Rope access anchors

Find all related products and resources on our website  
[kattsafe.com.au](https://kattsafe.com.au)

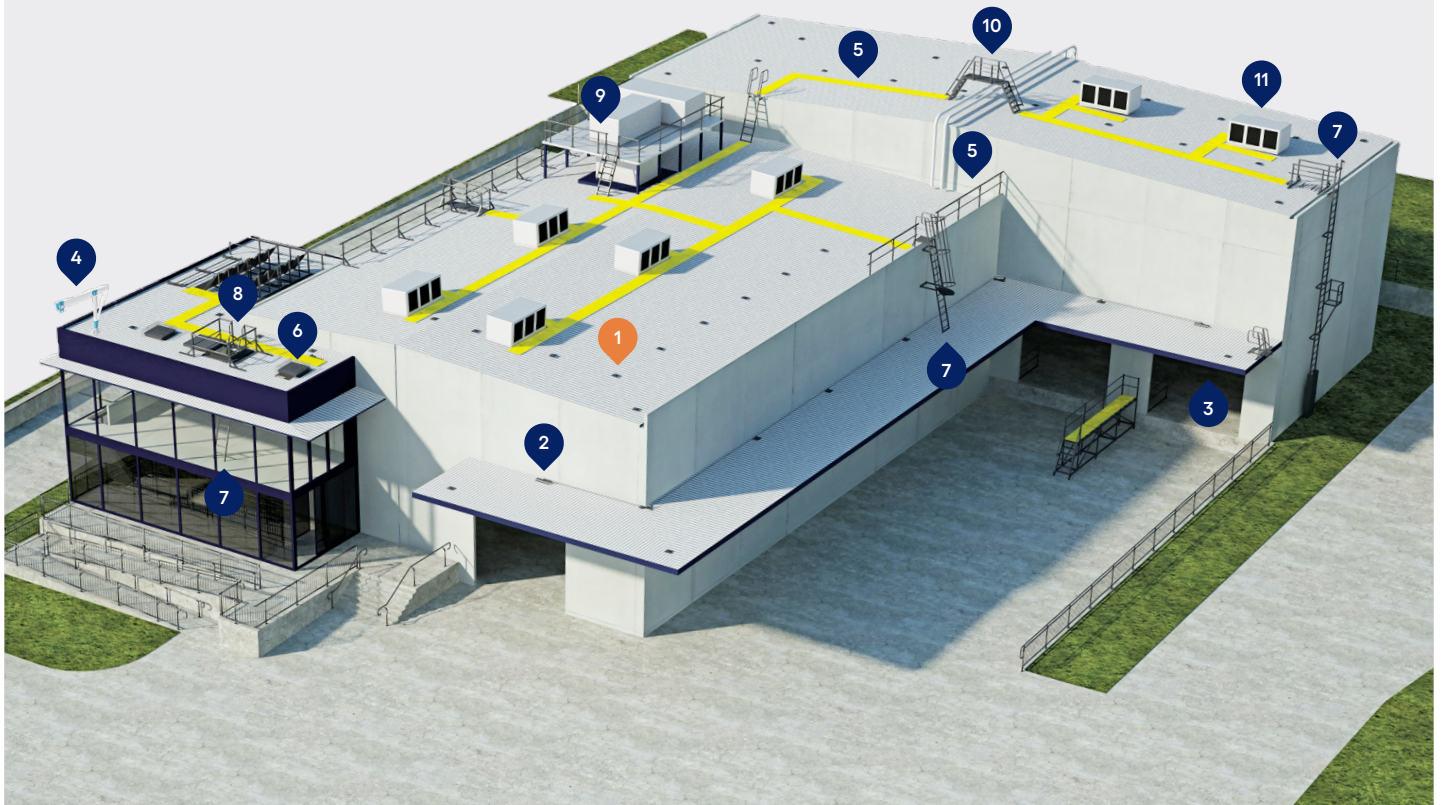
## Commercial building height access and fall protection requirements

Kattsafe leads the industry in the design, installation and management of access and fall protection safety systems.

The in-action model demonstrates access and fall protection requirements for a commercial building design. Kattsafe recommendations fulfill current workplace requirements for the safety of building maintenance subcontractors, employees and the general public.

For more information please contact Kattsafe.  
[kattsafe.com.au](http://kattsafe.com.au)

- 1 Anchor points
- 2 Static lines
- 3 Rigid rail
- 4 Davits and needles
- 5 Guardrail and walkway
- 6 Skylight protectors
- 7 Rung ladders
- 8 Access hatches
- 9 Platforms and stairs
- 10 Step ladders
- 11 HVAC platforms



# PURLIN MOUNT ANCHORS

High strength purlin mount anchor installed into purlins under metal roof decks for twin rope access and fall arrest use.



## Large eyelet

Stainless steel eyebolt for easy snap hook attachment, with a 50kN tensile load ability.



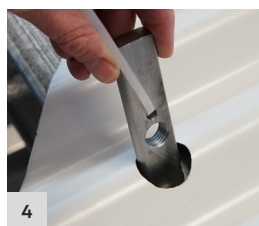
## Captured seal

O ring seal designed to be protected from exposure to UV.



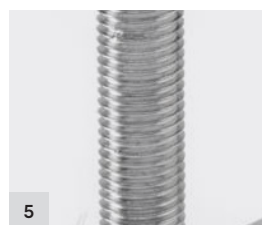
## Large support flange

Increases penetration seal area, and is protected with an EPDM seal.



## Anchor block

Stainless steel anchor block with rounded edges for easy installation.



## Eyebolt shank

High strength M16 stainless steel construction.





Compact purlin mount anchor that is installed into purlins under metal roof decks for twin rope access and fall arrest use.

The AP123 purlin mount anchor is designed for rope access and fall arrest use from metal roof decks. Designed to be low profile anchors with maximum strength. They also come in three different variations to ensure they can be mounted to any roof deck profile.

**Features and benefits of the system:**

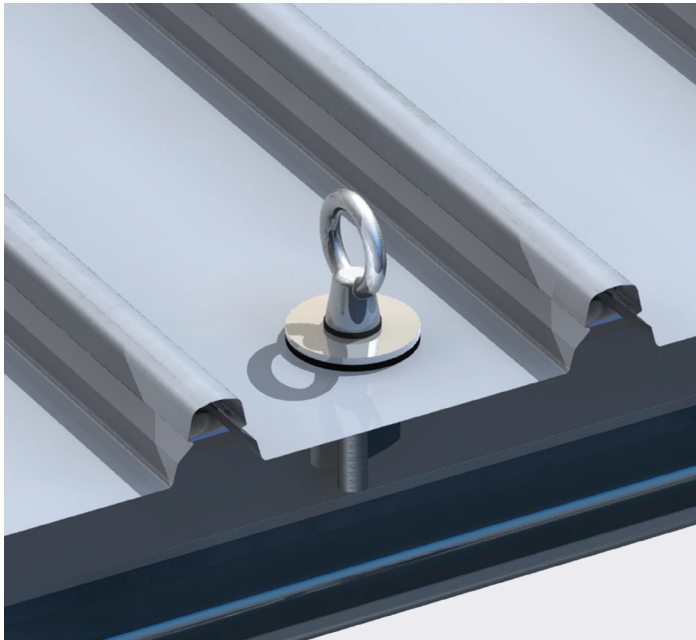
- Available in three different variations to suit flat, corrugated and square corrugated roofs.
- Rated to 15kN.
- Suited for fall arrest or twin rope access use.



# PURLIN MOUNT ANCHOR CONFIGURATIONS

## Ap123F Purlin mount anchor - flat

- Flat flange for mounting to flat pan areas of roof decks.



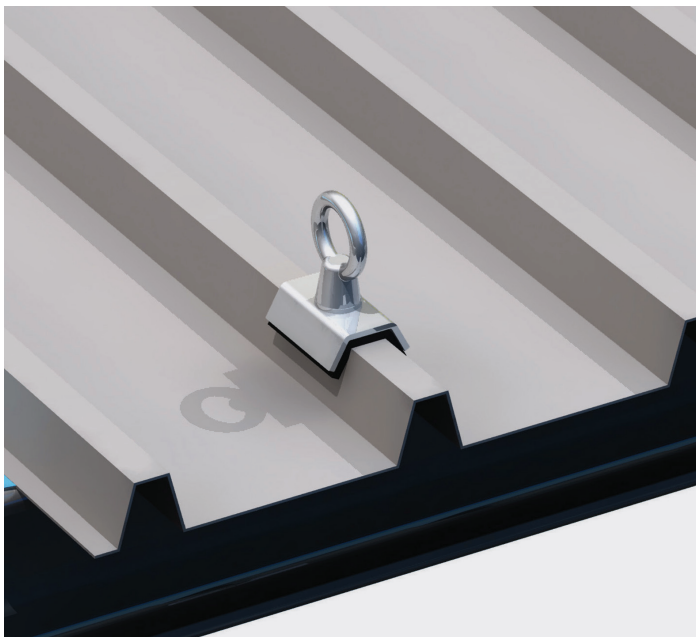
## AP123C Purlin mount anchor - corrugated

- Curved flange for mounting to corrugated roofs.



## AP123S Purlin mount anchor - square corrugated

- Square flange for mounting to square corrugated roofs.



---

# TECHNICAL SPECIFICATION

## Purlin mount anchor

### AP123

Compact purlin mount anchors installed into purlins under metal roof decks for twin rope access and fall arrest use. System design, supply, layout, installation and certification by a Kattsafe approved installer, as per the manufacturer's installation instructions and current standards.

### Materials

- 316 stainless steel
- Penetration seal: EPDM rubber

### Dimensions

- Total height: 165mm
- Eyebolt diameter: 60mm OD, 35mm ID
- Threaded rod: 100mm
- Flange: 70mm

### Weight

0.7kg

### Fixings (refer to installation manual)

See installation procedure.

### Substructure requirements

- Minimum purlin size: 150 x 1.5mm
- Minimum roof deck thickness: 0.42mm
- A minimum of three purlins connected to the roof deck
- Clip-fix roofs with less than 5 purlins require additional fixings. Refer to the installation manual for more details.

### Rating

- Fall arrest use: 15kN
- Rope access use: 12kN

### Compliance

The AP123 purlin mount anchor is designed and manufactured to conform to requirements of Australian and New Zealand Standard AS/NZS 5532:2013, AS/NZS 1891.4:2009 and relevant statutory WHS Codes of Practice/ Guidelines.

### Testing

Testing and performance based on requirements of Australian and New Zealand Standard AS/NZS 5532:2013.

- Dynamic load tested: 15kN
- Static load tested: 15kN

### Product warranty

10 years from the date of purchase subject to correct installation. Use and maintenance to be in accordance with manufacturer's specifications and recommendations. (This excludes wearing parts).

### Inspection and maintenance

Inspection and certification required every 12 months by competent person in accordance with manufacturer's specifications and requirements of Australian and New Zealand Standard AS/NZS 1891.4:2009 (refer installation manual).

### Important note

Failure to supply and/or install proprietary product in accordance with above standards and codes, specifications and instructions voids complete system certification and/or warranty.

---

# WARRANTY INFORMATION

Warranty period on this system:  
10 years from date of purchase

**Should you have a warranty claim as a result of a defect the following procedure must be followed:**

Identify the following information:

- The product/system name and code number.
- The date of purchase/installation.
- Installation company details.
- The installation identification number.
- The name of the company using this system.
- A description of the defect/warranty claim.
- The periodic system maintenance report.

Forward the above information to [sales@kattsafe.com.au](mailto:sales@kattsafe.com.au) or contact technical helpline, 1300 301 755.

## Terms and conditions

All warranty claims must be made in writing within 14 days of the appearance of the defect.

Incorrect installation or work done by a non accredited Kattsafe system installer will void all warranty rights.

Systems that have been installed using non proprietary equipment will void all warranties.

System roof/cladding and concrete penetration seals are not covered in this warranty.

Systems/components that have not been maintained in accordance with manufacturer's/legislative requirements will void warranty.

Systems used by incompetent persons or use with non compatible accessories ie. harness gear, lanyards, travellers, fall arrestors etc. will void warranty.

Systems/components used for purposes other than their intended use will void warranty.

General wear and tear is expected and will depend on the frequency of use and is not covered by warranty.





---

**Product brochure**  
Purlin mount anchors



---

**Installation manual**  
Concrete mount anchors



---

**Operation manual**  
Fall arrest anchors



---

**Operation manual**  
Rope access anchors



---

**QMS Certification**  
ISO 9001:2015

Find all related products and resources on our website.  
[kattsafe.com.au](https://kattsafe.com.au)

# Kattsafe

Height access  
and fall protection

1029 Mountain Highway  
Boronia Victoria 3155  
Australia

1300 301 755  
[sales@kattsafe.com.au](mailto:sales@kattsafe.com.au)  
[kattsafe.com.au](https://kattsafe.com.au)