

METAL ROOF MOUNT GUARDRAIL

GR32



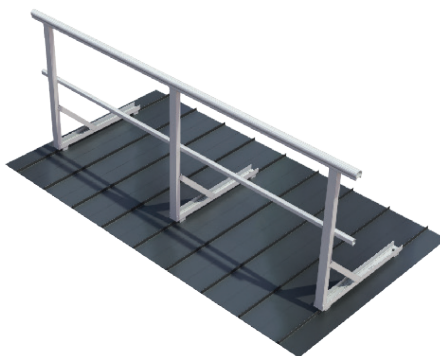
PRODUCT OVERVIEW



GR32 Metal Roof Mount Guardrail is designed for metal roofs including R panel and standing seam systems. The GR32 system can either be fastened down with self-sealing rivets to the metal deck or with non-penetrating clamps to suit the standing seam profile. Roof guardrail systems can be purchased by simply selecting the kit length(s) required, the number of corner kits, wall termination kits and ladder connection hardware kits. GR32 guardrail is simple and quick to install.

Features

- Manufactured of high tensile aluminum
- Modular system facilitates infinite configurations
- Can be easily customized on site to suit application
- OSHA compliant



TECHNICAL SPECIFICATION

Material and dimensions

- Top rail: 2in aluminum profiled tube - 6005-T5. 0.75lbs/ft
- Mid rail: 1-5/8in aluminum profiled tube - 6005-T5. 0.40lbs/ft
- Splice joins: profiled aluminum tube
- Post: 2-¼ x 1-½ x 1/8in Aluminum Rectangular Tube 6005-T5 - 40in; 2-½ x 1-½ x 1/8in Aluminum Channel 6005-T5 - 31.5in; 2-½ x 1-½ x 1/8in Aluminum Channel 6005-T5 - 18in
- Post mounting: standing seam clamps or rivets
- Tobe board: 4-¼ x 1 x 3/32in Aluminum Channel - 6005-T5. 0.70lbs/ft
- Hardware: all stainless steel
- Corner elbows: die cast aluminum. Top rail corner - 0.8lbs. Mid rail corner - 0.42lbs
- End caps: plastic caps

Finish

All aluminum sections are supplied mill finish as standard. Safety Yellow option in stock. Custom colors are available

Layout and installation

- Railing height to be 42in (-/+ 3in per OSHA) when installed correctly. Distance between top rail and mid rail cannot exceed 19in
- Post spacing is a maximum of 8ft
- GR32 guardrail posts are secured to the roof substrate with standing seam clamps or rivets. Project-specific data is required to determine the correct type of fastener and number needed to secure each post. An ANSI/SPRI FX-1 Pull Test is recommended to measure the pull-out resistance of fasteners included in the load path

Compliance

The GR32 modular guardrail system is designed and manufactured to meet and exceed OSHA and ANSI regulations as applicable.

Product warranty

5 years from date of installation, subject to correct installation, use, and maintenance in accordance with manufacturer's specifications and recommendations. Extended warranty is available on a per project basis.