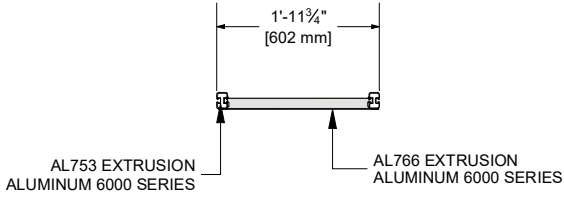
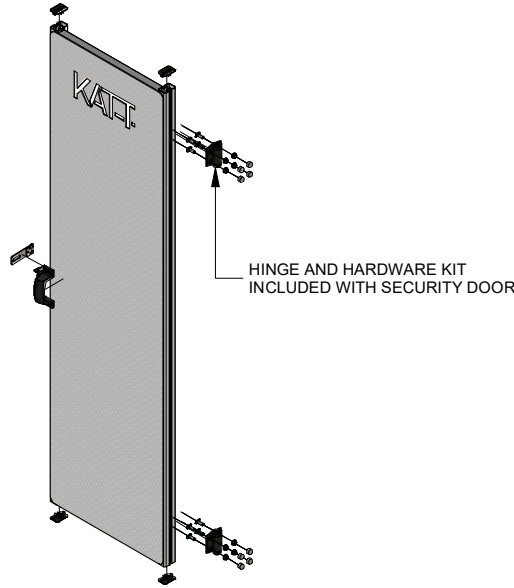


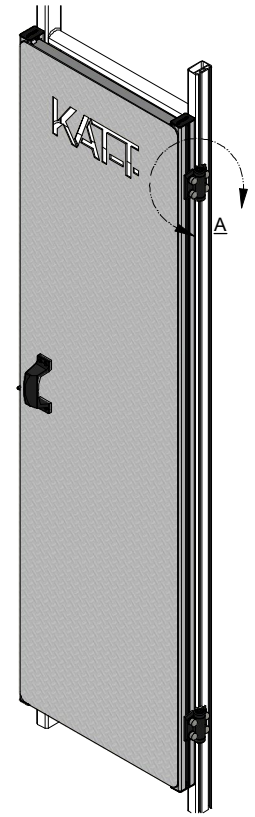
PROJECT REF: _____
 CONTRACTOR: _____
 APPROVED BY: _____
 SIGN HERE: _____



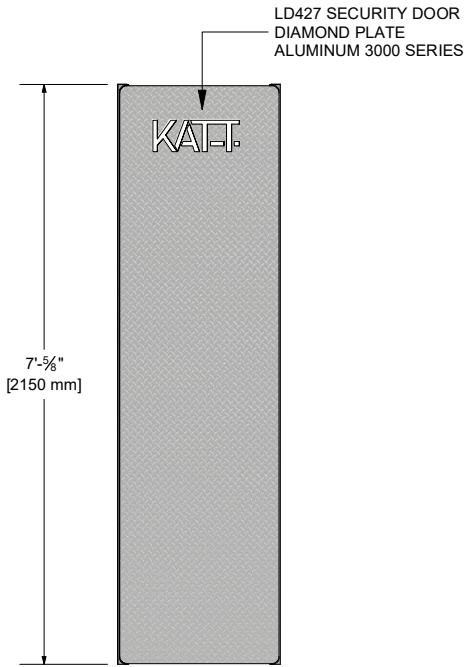
TOP VIEW (1 : 28)



HINGE AND HARDWARE KIT INCLUDED WITH SECURITY DOOR

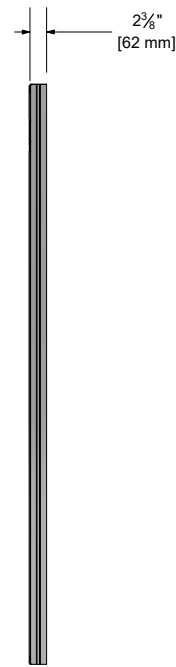


ISOMETRIC VIEW (1 : 20)



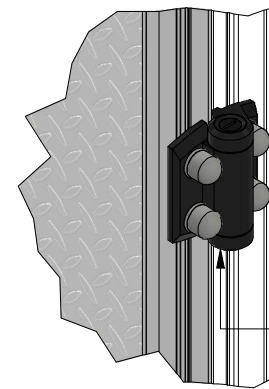
LD427 SECURITY DOOR DIAMOND PLATE ALUMINUM 3000 SERIES

FRONT VIEW (1 : 28)



2 3/8" [62 mm]

SIDE VIEW (1 : 28)



DETAIL A (1 : 5)

HINGE IS MOUNTED ON GROOVE ON SECURITY DOOR AND FRONT GROOVE OF KATTSafe LADDER STILE

Kattsafe

3921 PERRY BLVD TEL: 888 637 7872
 WHITESTOWN, IN 46075 SALES@KATTSafe.COM

THIS DRAWING REMAINS THE PROPERTY OF KATTSafe® AND MAY NOT BE CHANGED WITHOUT WRITTEN PERMISSION

DESCRIPTION	HINGED SECURITY DOOR	PRODUCT CODE	LD427	1 / 28	PAGE 1 OF 1
MATERIAL	ALUMINUM	FINISH	MILL	DR	DATE: 4/2/2024
				DWG No. LD427.TD	SIZE: A
					REV.

REV	DATE	BY	COMMENTS