



On-Farm Climate Action Fund (OFCAF)

Guide to Locating and Labelling BMP Action Plans

Updated March 2026



Agriculture and
Agri-Food Canada

Agriculture et
Agroalimentaire Canada



On-Farm Climate Action Fund (OFCAF)

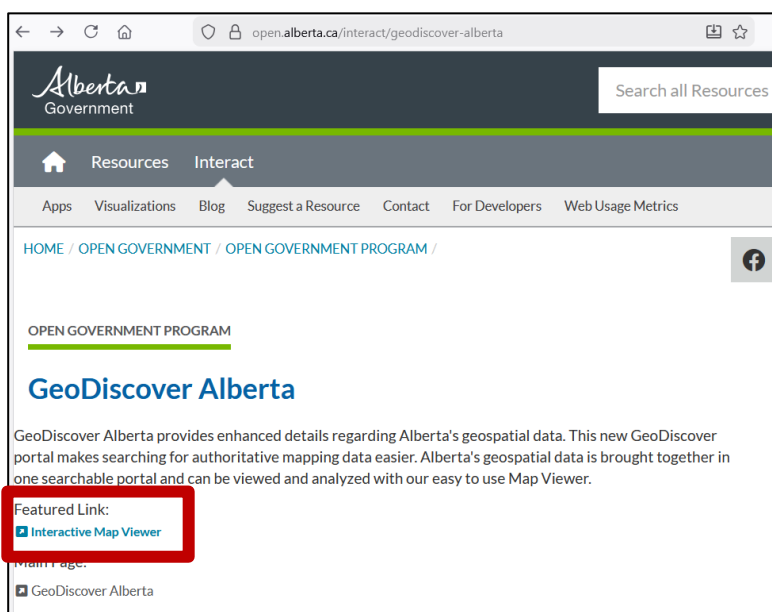
When applying to the OFCAF program, there are many ways to identify fields and Beneficial Management Practice (BMP) Action Plans using scanned aerial photos or satellite images. Often, different software is needed to add labels. This guide outlines using a single program, the Alberta Government’s free [GeoDiscover Alberta](#) tool, to identify and label fields.

The following instructions help start the interactive geospatial viewer, set up a basic outline of field boundaries, add labels and measurements, and save and submit the final image.

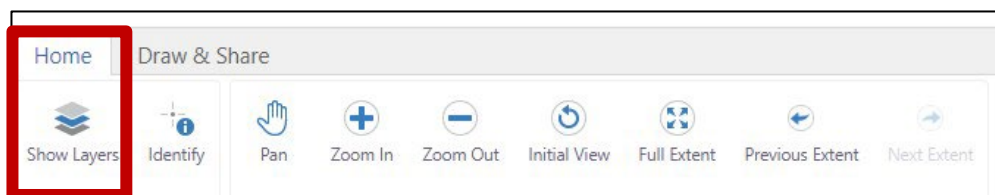
Trouble shooting: If the tool is not responding well, find a location where high-speed internet is available, or clear your browser cache, or try using a different browser.

Getting started

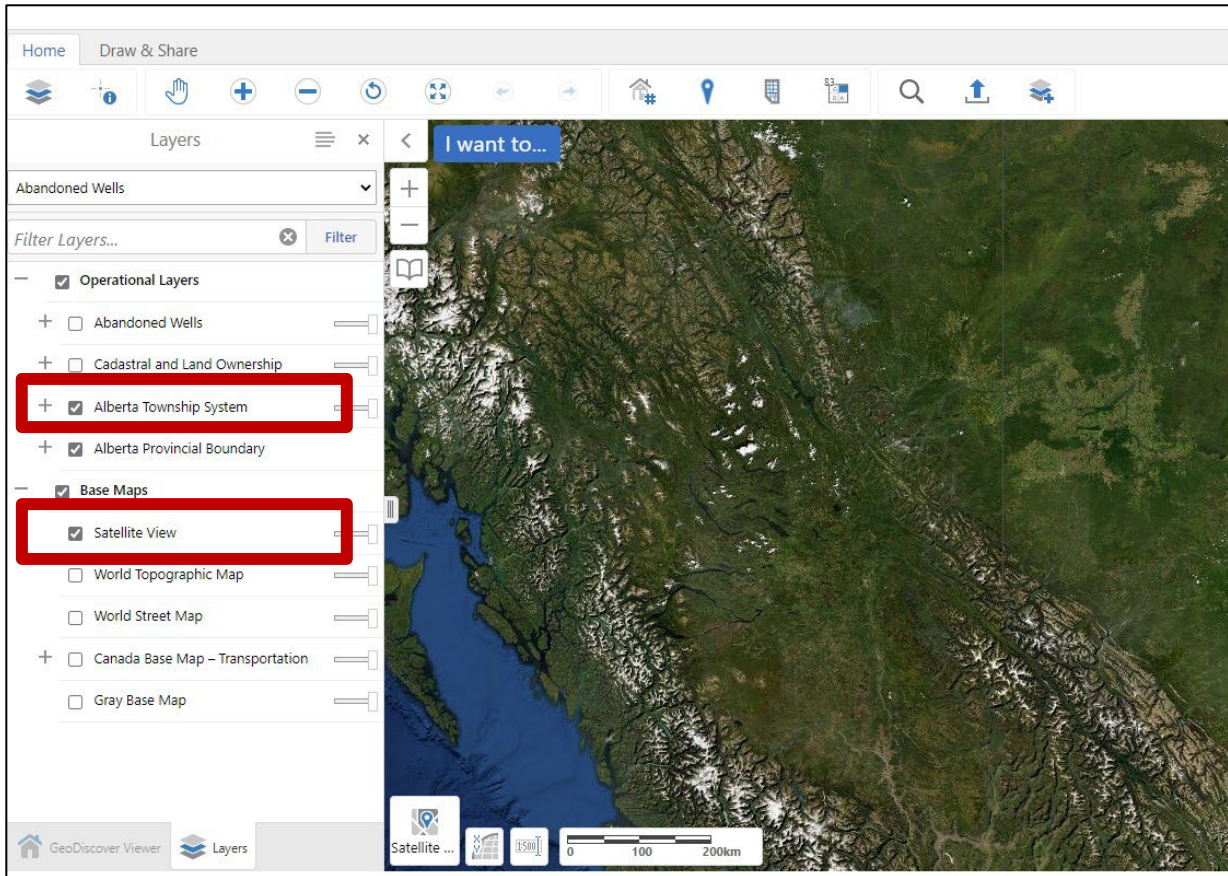
1. Open [GeoDiscover Alberta](#) and then on the “Interactive Map Viewer”.



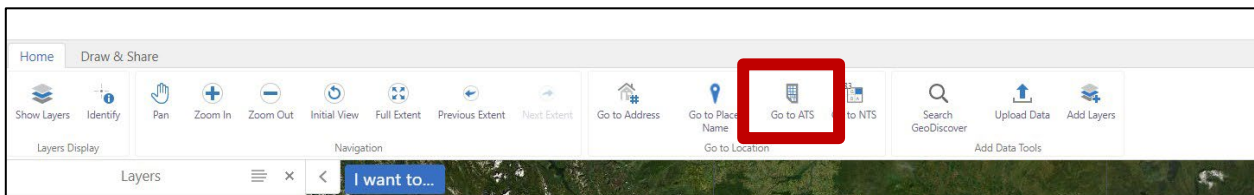
2. In the “Home” toolbar tab, click on the “Show Layers” icon:



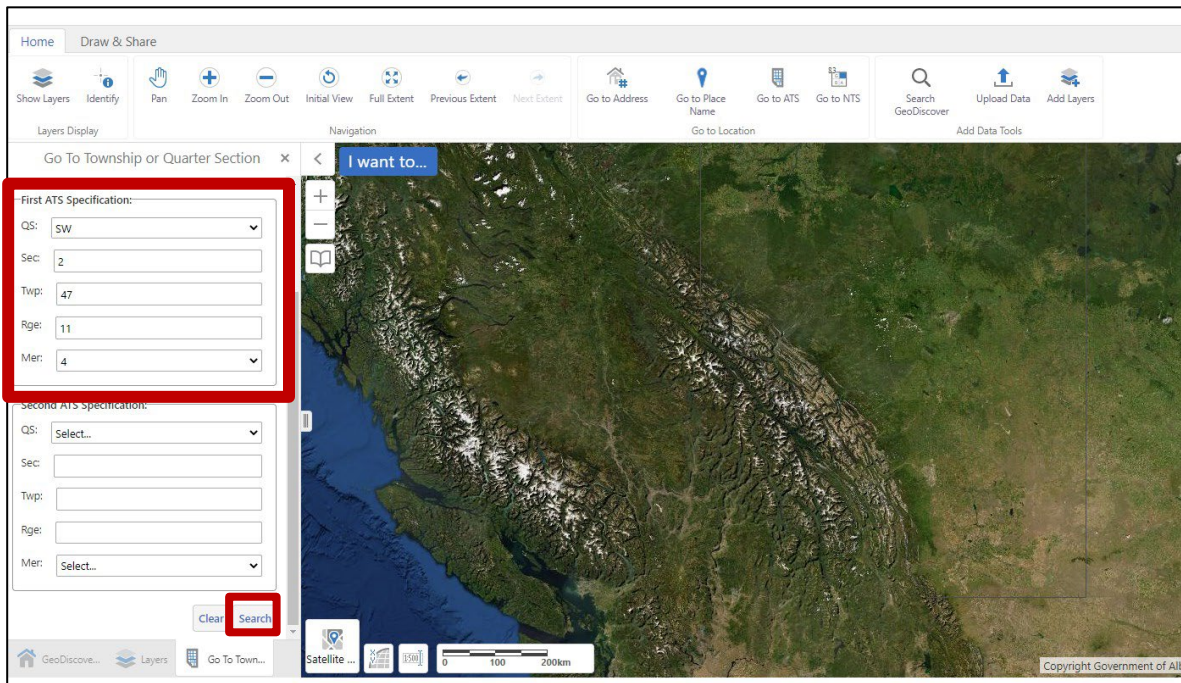
- In the left hand “Show Layers” menu that pops up, under “Operational Layers”, click to select “Alberta Township System”. Under “Base Maps”, select “Satellite View”. Be sure to clear other pre-selected layers by unchecking their boxes so further steps will work better.



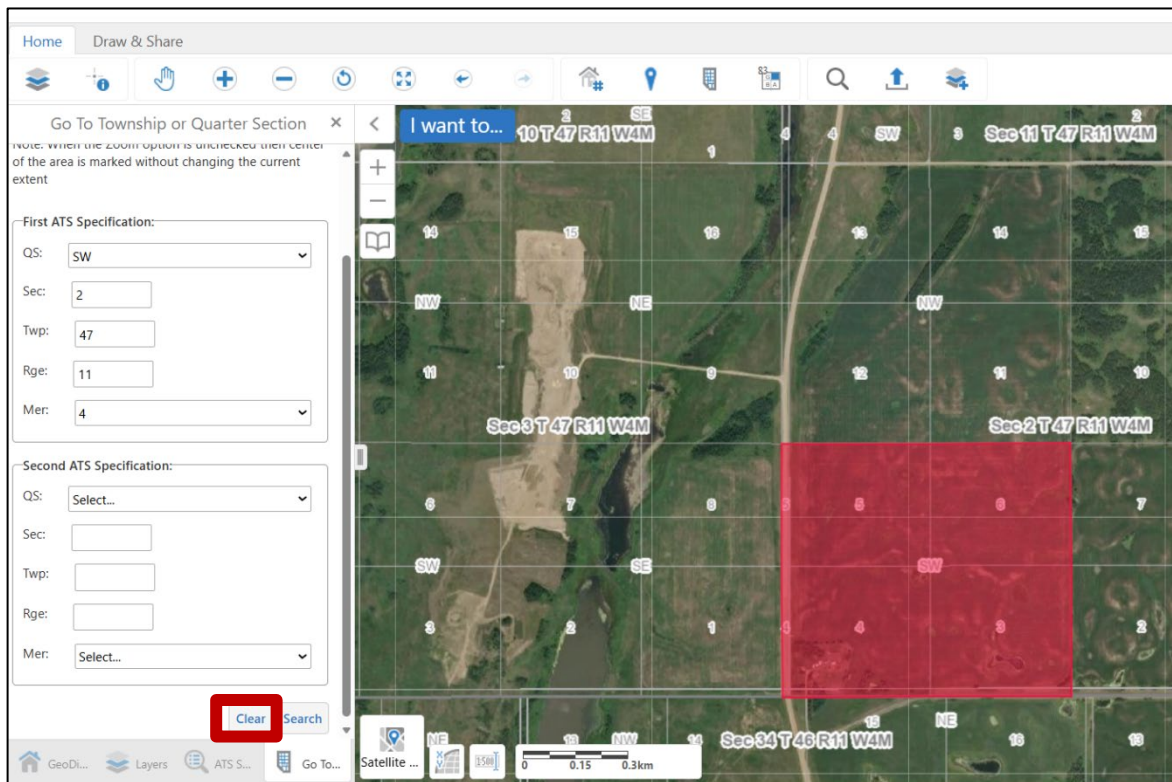
- Individual fields can be found by entering Legal Land Descriptions (LLD). In the Home toolbar click on the “Go to ATS” (Alberta Township System) icon to input the LLD of the field of interest.



- In the new menu to the left, input the field coordinates in the appropriate boxes, then click “Search” in the lower-right corner of the menu.

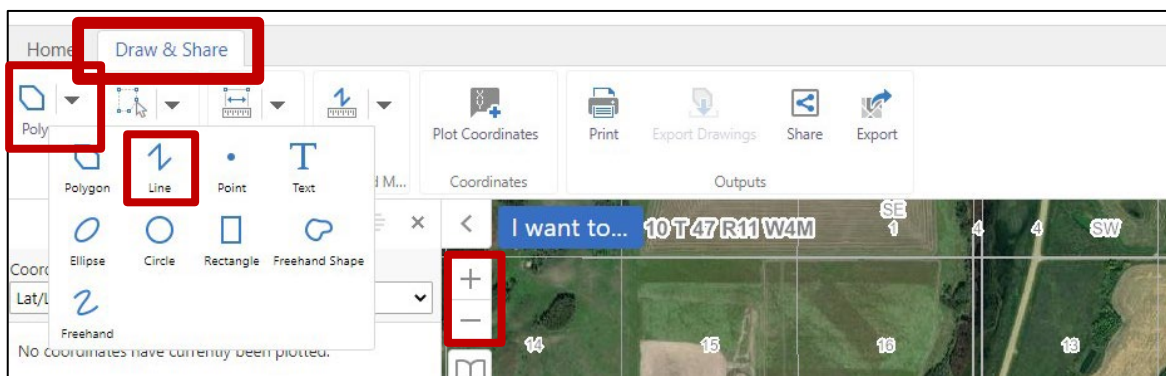


- The screen will zoom into the field of interest and highlight it. To clear the red box, scroll down to the bottom of the menu using the grey bar or arrows along the right side of the menu, click on Clear. (Note: if box turns yellow, see Troubleshooting notes on page 2).

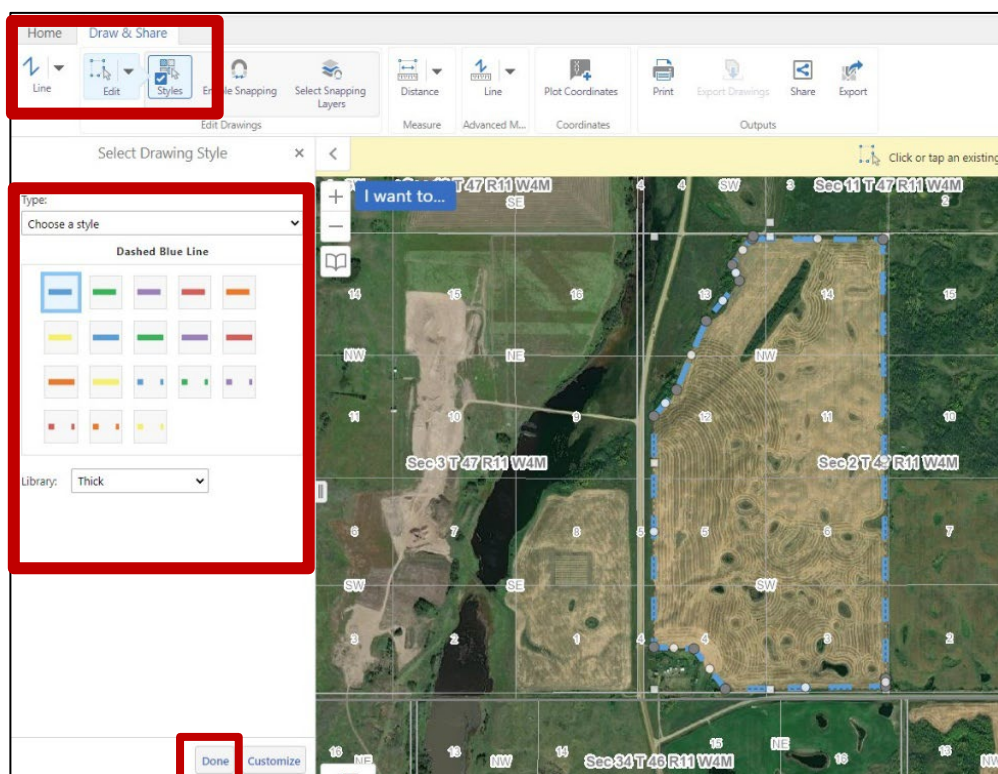


Creating the base for your BMP Action Plan

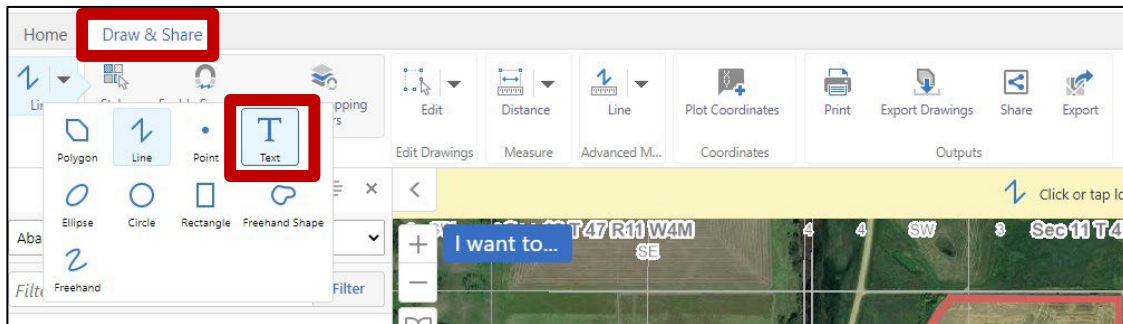
1. Use the “+/-” icons in the top left right of the image to zoom in and out. Click anywhere on the image to move different screen areas into view.
2. Using the “Draw & Share” toolbar, click on the far left “Polygon” icon and select “Line” to begin outlining the field of interest. The “Edit/Erase” icon will delete individual lines, or use “Clear” to delete entire drawings.



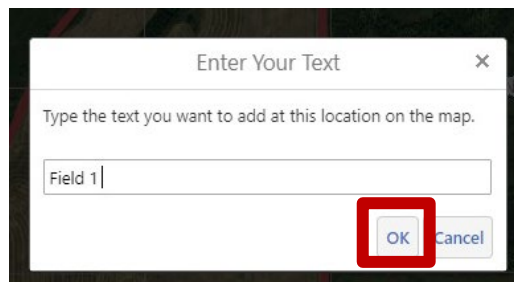
3. Click on the field corner, then on the next corner to outline the shape of the field. Click “Done” when complete. To improve the visibility of the line around the field, repeat using the “Draw & Share” toolbar to click on the “Line” icon, then the “Style” icon to select the line colour and thickness. Once complete, click “Done” to save your changes. (Note: if this function is not available, see Troubleshooting notes on page 2)



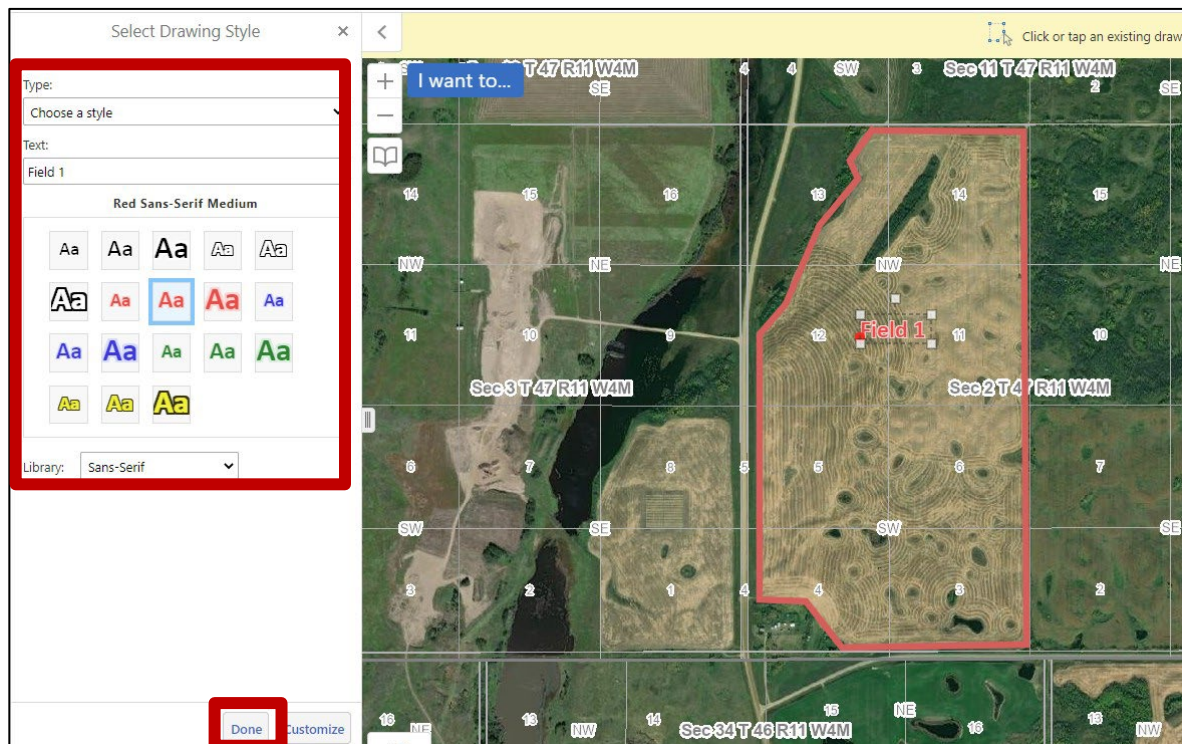
- To label the field and various features, use the “Draw & Share” toolbar and click the far left icon to select Text or “T”.



- Click on an area on the field where you want the text to be placed, then enter the text you want to be displayed on the field. Click “OK” when complete.

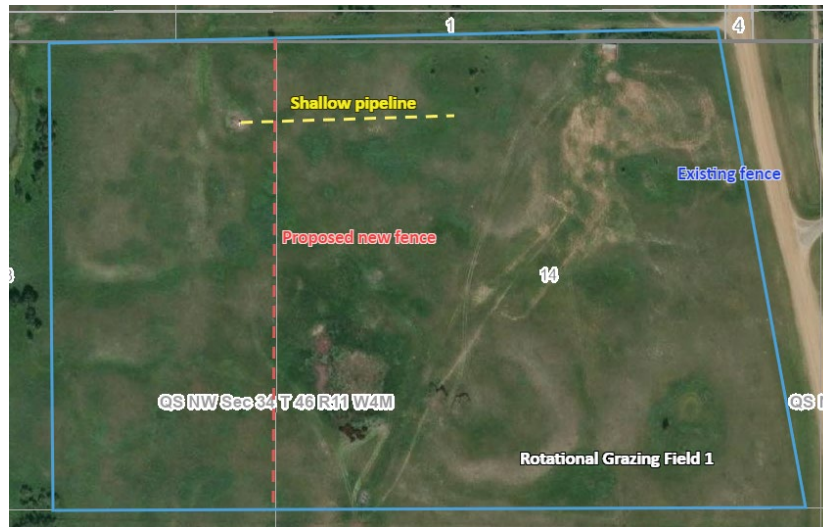


- To improve visibility of the text, in the “Draw & Share” toolbar click “Edit” icon, then select “Styles” to change the font type, size, and colour of the next text. Click “Done” when complete. (Note: If this feature is not working, see Troubleshooting on page 2).

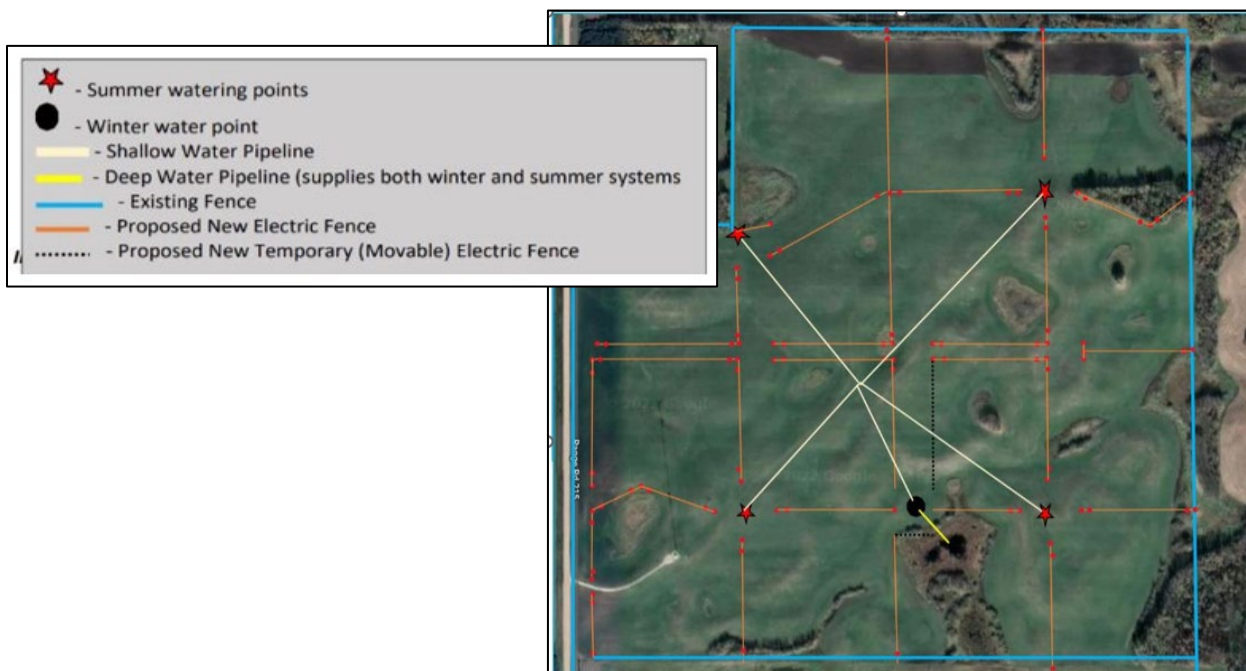


Example details for your BMP Action Plan

1. Use the icons described above in the “Draw & Share” toolbar to outline and label additional features in the field as described above. As shown below, existing and planned features (fencing, water lines, etc.) can be identified using different line styles, colours and labels.

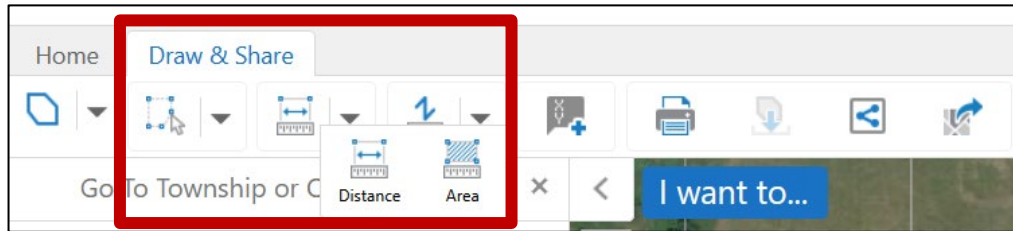


2. A legend can also be used to identify features as shown in this example of a Rotational Grazing plan. Please be sure to specify water sources.

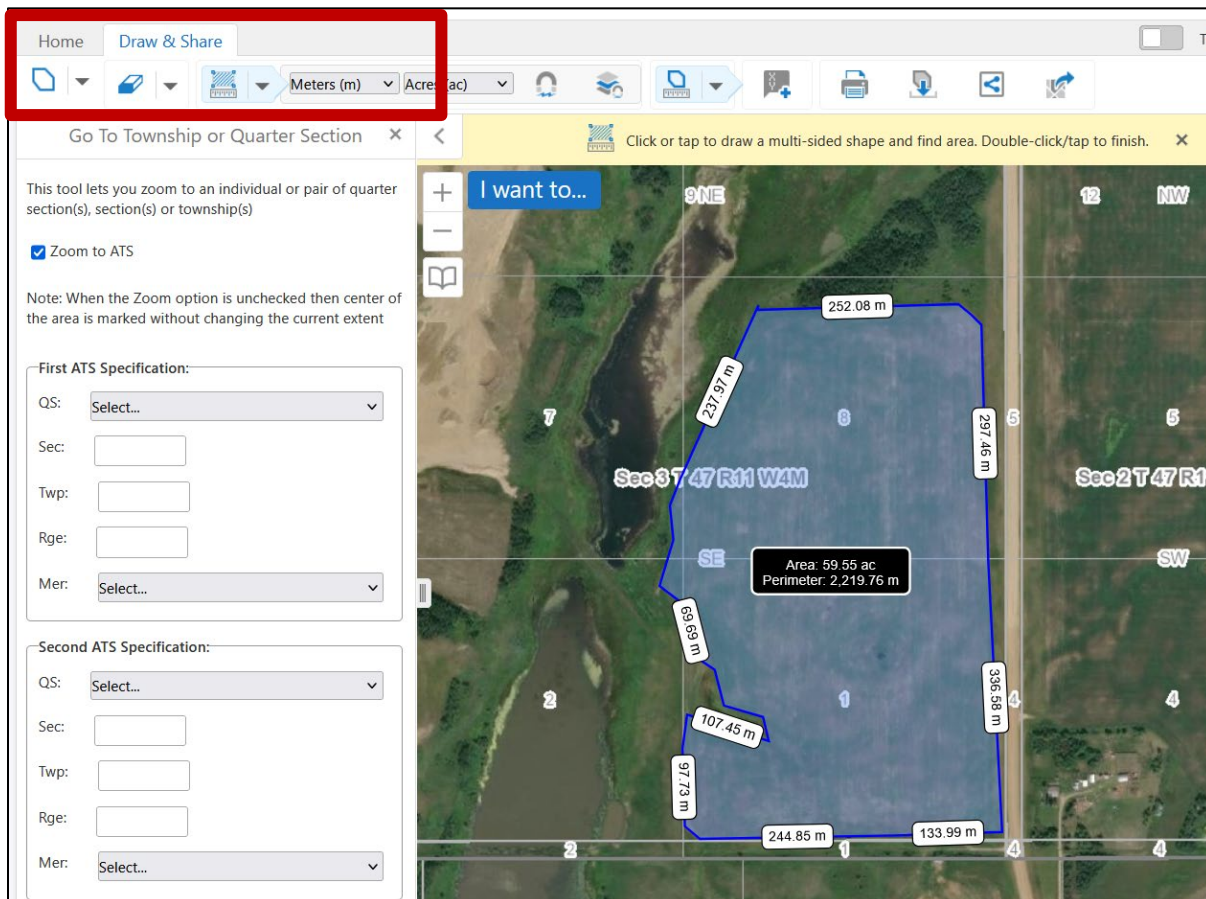


Adding measurements to your BMP Action Plan

1. Use the “Distance” or “Area” icon in the multi-measure icon in the “Draw & Share” toolbar to add measurement details to your Plan. Clicking on the icon will show the different units that may be selected e.g. feet (ft) or meters (m), acres (ac) or square meters (m²).

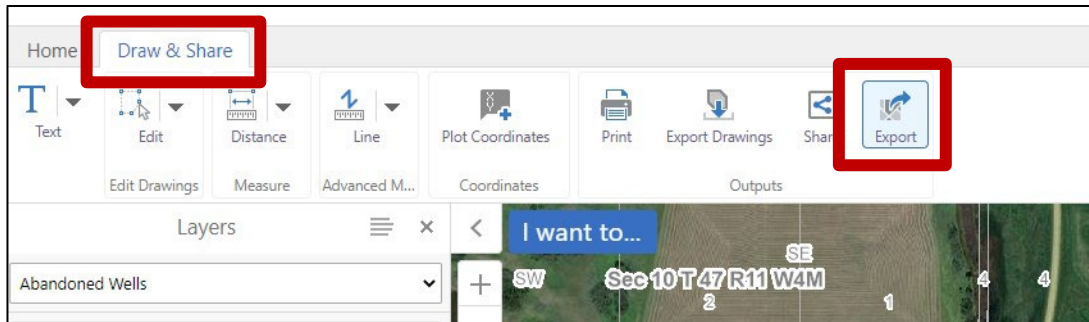


2. Outline fencelines for length and fields for perimeters or areas. Double click when each segment is complete.

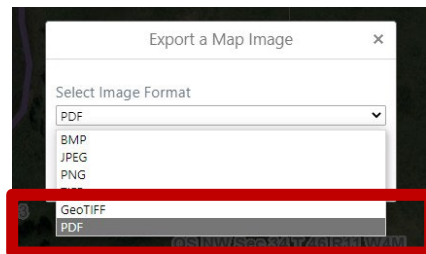


Save and submit your BMP Action Plan to ARGO

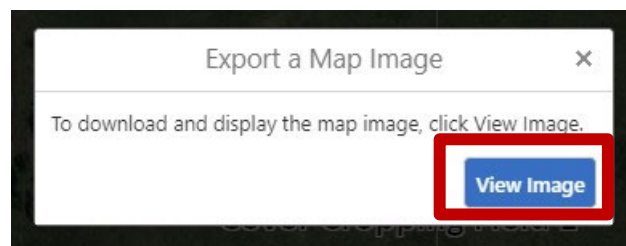
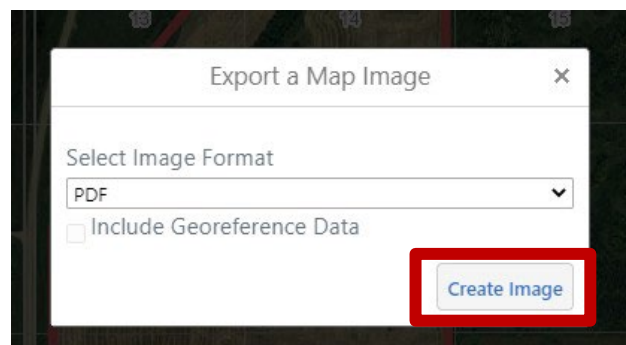
1. Once all edits have been made, using the “Draw & Share” toolbar, click on the “Export” icon.



2. Select “PDF” from the drop-down menu:



3. Click on the “Create Image” icon. When complete, click “View Image” to see the final PDF. You may need to install the free Adobe Acrobat program on your computer to view the map.



4. After the file has been saved, you can upload the PDF image to the online OFCAF application and submit it with your BMP Act. If your screen does not appear as shown below, the PDF file can be submitted as a separate document.

