

Artwork Setup Guide

PAPER TUBES



Download template

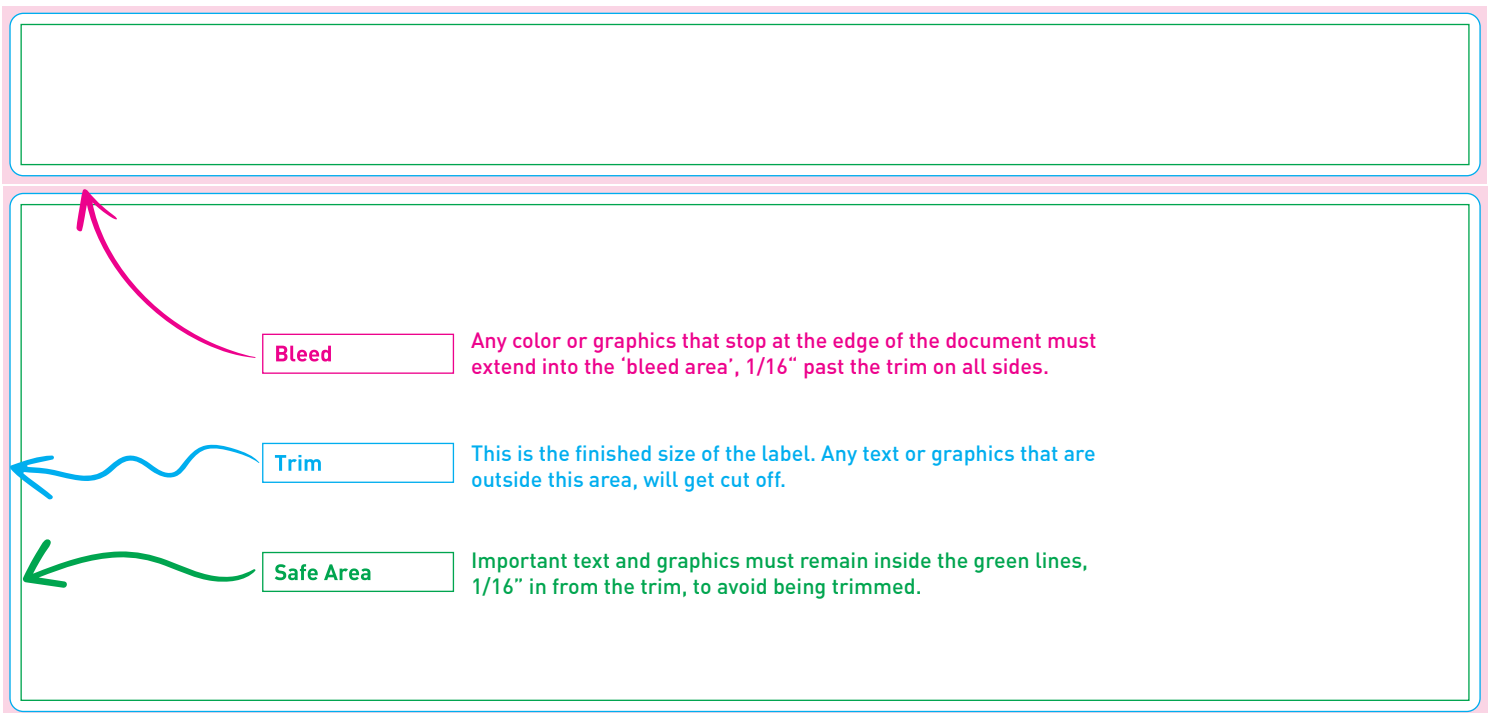
You must setup your design on Roastar's product specific template which is available to download from each project you create or can be found [here](#).



Review template legend

Review the legend below to understand what each colored line on the template represents. Keep in mind that each template is specific to product type so be sure to review the correct legend.

Click [here](#) to view our instructional video about setting up artwork to our templates.





Setup design according to our file standards



Color Information

CMYK (Process) is the required color mode.

Spot Colors will print as CMYK and must be named appropriately, specifically from the Pantone Solid Coated swatch book. Custom spot colors will be converted to CMYK and print as is, unless accompanied with a printed sample or color target.

Black color swatch must use 100% black (K) only and should not contain any Cyan, Magenta, or Yellow color values (a.k.a. Rich Black). In addition, do not use the Registration color swatch either. Please convert black ink only files to grayscale color mode.



Image Resolution

For best print quality, we require a minimum of 300dpi for any raster images in the design.



Template

Do not place the design on the same layer as the template. That is for design setup purposes only and should be deleted from the file before submitting to us.



Bleed

Review the legend of this style pouch for the specific bleed requirements, indicated as pink.



Safe Zone

Keep important text and graphics inside the safe zone, indicated as solid green lines on the template.



Barcode Standards

We recommend barcodes be set up with the standard white background with black bars for maximum scannability at a minimum size of 1.5" wide x 1" tall.

For recycled brown kraft material



White Layer Setup

Designs that print on the recycled brown kraft material, require white ink to print under the design elements that you do not want to blend with the brown material. If you are desiring colors to appear vibrant, white ink will need to print underneath. Please include a separate white layer within the file to indicate where you would like the white ink to print.

[Click here to view our instructional video for White Ink setup.](#)

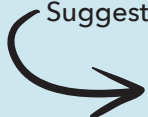


Proof your design

The artwork file(s) submitted must be the final design.

Proof it carefully beforehand as any changes, modifications, or corrections that need to be made during or after the proofing process will cause delays in processing your order.

Suggestions for things to look for are as follows...

- 
- ✓ SPELLING & PUNCTUATION
 - ✓ BARCODE ACCURACY
 - ✓ IMAGE QUALITY
 - ✓ SIZE & DIMENSION



Prepare design for upload

[Click here to view our instructional video for preparing your design for print.](#)



Remove Templates and all Non-Printing Layers

All template and other non-printing layers, along with any trim/crop marks or registration marks must be deleted from the file before submitting to us. The final design should be all that is visible.



Outline Fonts

To ensure fonts print properly, please convert all text to outlines.



Embed Links & Images

Please ensure all placed or linked images are embedded into the file.



File Dimensions

Save the file to the size of the template dimensions.



File Size

Maximum file size is 100MB. If the file exceeds this limit, you will receive an error when you upload the file to a project.



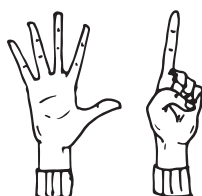
Save Files Separately

Each design needs to be saved as a separate file and uploaded to your project individually.



Accepted Filetypes

Save as either an **.ai** or **.pdf** with Illustrator Default settings or when saving from other software programs, please choose a High Quality PDF setting. *If saving files from Canva, you must use Canva Pro in order to create print ready artwork files that meet our specifications.*



Upload design(s)

Log in to your account at **Roastar.com** and upload each design to its appropriate project.