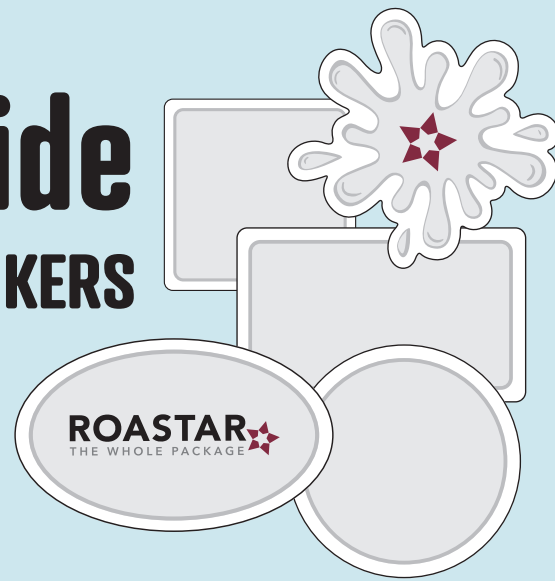


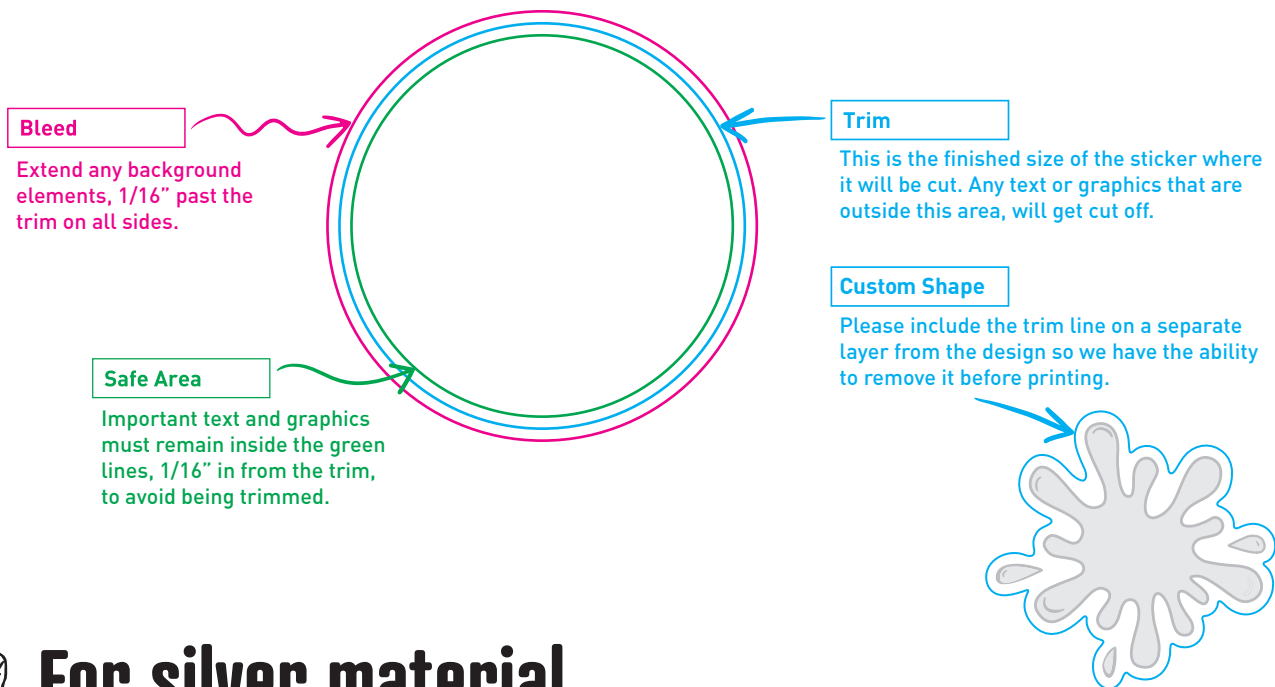
Artwork Setup Guide

STICKERS



Document setup

The file must be setup to the finished size plus bleed. Review the legend below to understand what each colored line represents.



For silver material



White Layer Setup

Designs that print on silver, must include a separate white layer within the file to indicate where you would like the white ink to print.

Metallic effects are created by printing the inks directly onto a silver substrate. For any part of the design that is not metallic, white ink is printed first onto the substrate followed by process colored inks on top. In these instances, the white ink is used to block out the metallic sheen of the substrate providing a white background or base.

Click here to view our instructional video for Metallic Effects setup.



Setup design according to our file standards



Color Information

CMYK (Process) is the required color mode.

Spot Colors will print as CMYK and must be named appropriately, specifically from the Pantone Solid Coated swatch book. Custom spot colors will be converted to CMYK and print as is, unless accompanied with a printed sample or color target.

Black color swatch must use 100% black (K) only and should not contain any Cyan, Magenta, or Yellow color values (a.k.a. Rich Black). In addition, do not use the Registration color swatch either. Please convert black ink only files to grayscale color mode.



Image Resolution

For best print quality, we require a minimum of 300dpi for any raster images that are used in the design.



Trim line

The stickers are cut with a laser that follows the path of the trim line indicated in the artwork file, preferably as a vector shape on a separate layer from the design that can be turned off before printing. Any sharp corners within the trim line must be adjusted to a minimum corner radius of .04".



Bleed

There must be 1/16" of bleed included on all sides of design.



Safe Zone

Keep important text and graphics 1/16" in from the finished size of the sticker.



Proof your design

The artwork file(s) submitted must be the final design.

Proof it carefully beforehand as any changes, modifications, or corrections that need to be made during or after the proofing process will cause delays in processing your order.

Suggestions for things to look for are as follows...

- ☒ SPELLING & PUNCTUATION
- ☒ IMAGE QUALITY
- ☒ SIZE & DIMENSION



Prepare design for upload



Outline Fonts

To ensure fonts print properly, please convert all text to outlines.



Embed Links & Images

Please ensure all placed or linked images are embedded into the file.



File Dimensions

Save the file to the dimensions of the finished size plus 1/8" bleed.



File Size

Maximum file size is 100MB. If the file exceeds this limit, you will receive an error when you upload the file to a project.



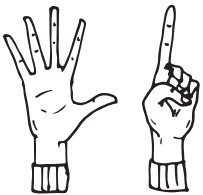
Save Files Separately

Each design needs to be saved as a separate file and uploaded to your project individually.



Accepted Filetypes

For best print quality, vector art files (**ai - pdf - eps**) with Illustrator Default settings are recommended. Other file types accepted are high resolution raster art files (**psd - pdf - tiff - jpg**). *If saving files from Canva, you must use Canva Pro in order to create print ready artwork files that meet our specifications.*



Upload design(s)

Log in to your account at **Roastar.com** and upload each design to its appropriate project.